



SZABO SCANDIC

Part of Europa Biosite

Produktinformation



Forschungsprodukte & Biochemikalien



Zellkultur & Verbrauchsmaterial



Diagnostik & molekulare Diagnostik



Laborgeräte & Service

Weitere Information auf den folgenden Seiten!
See the following pages for more information!



Lieferung & Zahlungsart

siehe unsere [Liefer- und Versandbedingungen](#)

Zuschläge

- Mindermengenzuschlag
- Trockeneiszuschlag
- Gefahrgutzuschlag
- Expressversand

SZABO-SCANDIC HandelsgmbH

Quellenstraße 110, A-1100 Wien

T. +43(0)1 489 3961-0

F. +43(0)1 489 3961-7

mail@szabo-scandic.com

www.szabo-scandic.com

[linkedin.com/company/szaboscandic](https://www.linkedin.com/company/szaboscandic) 

Rabbit Anti-Goat IgG antibody, pre-adsorbed (FITC)

Cat. No. GTX04169-06

Host	Rabbit
Clonality	Polyclonal
Isotype	IgG
Application	WB, ICC/IF, IHC-P, IHC-Fr, FACS, ELISA
Reactivity	Goat

Package
1 mg

APPLICATION

Application Note

*Optimal dilutions/concentrations should be determined by the researcher.

Suggested dilution	Recommended dilution
WB	Assay dependent
ICC/IF	Assay dependent
IHC-P	Assay dependent
IHC-Fr	Assay dependent
FACS	Assay dependent
ELISA	1:200-1:400

Not tested in other applications.

Product Note

Pre-adsorbed with Human serum proteins (SP). May react with immunoglobulins from other species and the light chains of other goat immunoglobulins.

PROPERTIES

Form	Liquid
Buffer	PBS
Preservative	0.09% sodium azide
Storage	Store as concentrated solution. Centrifuge briefly prior to opening vial. Store at 4°C. Protect from light.
Concentration	1 mg/ml (Please refer to the vial label for the specific concentration.)
Immunogen	Pooled antisera from rabbits hyperimmunized with goat IgG
Purification	Purified by antigen-affinity chromatography
Conjugation	Fluorescein isothiocyanate (FITC)

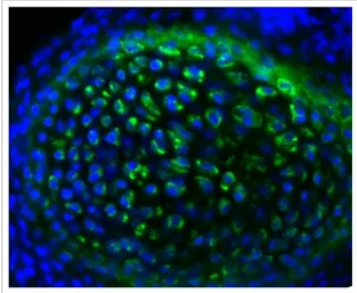


For full product information, images and publications, please visit our [website](#).

For laboratory research use only. Not for any clinical, therapeutic, or diagnostic use in humans or animals. Not for animal or human consumption.

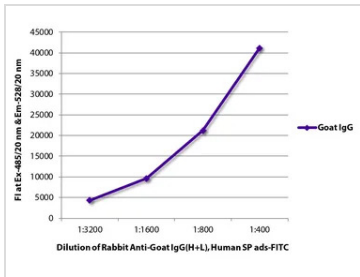
Note
 Purchasers shall not, and agree not to enable third parties to, analyze, copy, reverse engineer or otherwise attempt to determine the structure or sequence of the product.

DATA IMAGES



GTX04169-06 IHC-Fr Image

IHC-Fr analysis of mouse rib tissue using Goat Anti-Collagen II antibody followed by GTX04169-06 Rabbit Anti-Goat IgG antibody, pre-adsorbed (FITC).



GTX04169-06 ELISA Image

ELISA analysis of purified goat IgG using GTX04169-06 Rabbit Anti-Goat IgG antibody, pre-adsorbed (FITC).



For full product information, images and publications, please visit our [website](#).