



SZABO SCANDIC

Part of Europa Biosite

Produktinformation



Forschungsprodukte & Biochemikalien



Zellkultur & Verbrauchsmaterial



Diagnostik & molekulare Diagnostik



Laborgeräte & Service

Weitere Information auf den folgenden Seiten!
See the following pages for more information!



Lieferung & Zahlungsart

siehe unsere [Liefer- und Versandbedingungen](#)

Zuschläge

- Mindermengenzuschlag
- Trockeneiszuschlag
- Gefahrgutzuschlag
- Expressversand

SZABO-SCANDIC HandelsgmbH

Quellenstraße 110, A-1100 Wien

T. +43(0)1 489 3961-0

F. +43(0)1 489 3961-7

mail@szabo-scandic.com

www.szabo-scandic.com

[linkedin.com/company/szaboscandic](https://www.linkedin.com/company/szaboscandic) 

Mouse Anti-Chicken IgM antibody [M-1] (PE)

Cat. No. GTX04172-08

Host	Mouse
Clonality	Monoclonal
Isotype	IgG2b
Application	ICC/IF, IHC-Fr, FACS, IP, ELISA, Activation
Reactivity	Chicken, Turkey

Package
100 µg

APPLICATION

Application Note

*Optimal dilutions/concentrations should be determined by the researcher.

Suggested dilution	Recommended dilution
ICC/IF	Assay dependent
IHC-Fr	Assay dependent
FACS	$\leq 0.2 \mu\text{g}/10^6\text{cells}$
IP	Assay dependent
ELISA	$\leq 1 \mu\text{g}/\text{mL}$
Activation	Assay dependent

Note : The suggested use of these reagents is in a final volume of 100µl.

Not tested in other applications.

Product Note Reacts with Chicken/Turkey IgM.

PROPERTIES

Form	Liquid
Buffer	PBS with a stabilizer
Preservative	0.09% sodium azide
Storage	Store as concentrated solution. Centrifuge briefly prior to opening vial. Store at 4°C. DO NOT FREEZE. Protect from light.
Concentration	0.1 mg/ml (Please refer to the vial label for the specific concentration.)
Immunogen	Affinity purified chicken Ig or isolated lymphocytes
Purification	Purified IgG2b
Conjugation	Phycoerythrin (PE)



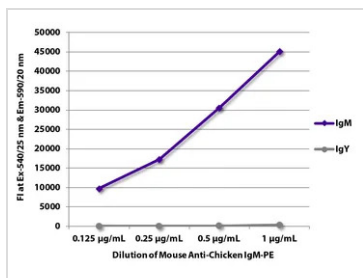
For full product information, images and publications, please visit our [website](#).

For laboratory research use only. Not for any clinical, therapeutic, or diagnostic use in humans or animals. Not for animal or human consumption.

Note

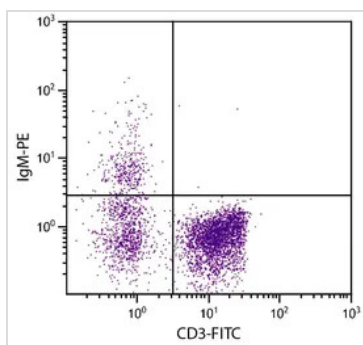
Purchasers shall not, and agree not to enable third parties to, analyze, copy, reverse engineer or otherwise attempt to determine the structure or sequence of the product.

DATA IMAGES



GTX04172-08 ELISA Image

ELISA analysis of purified chicken immunoglobulins using serially diluted GTX04172-08 Mouse Anti-Chicken IgM antibody [M-1] (PE).



GTX04172-08 FACS Image

FACS analysis of chicken peripheral blood lymphocytes using Mouse Anti-Chicken CD3 antibody (FITC) and GTX04172-08 Mouse Anti-Chicken IgM antibody [M-1] (PE).



For full product information, images and publications, please visit our [website](#).