



SZABO SCANDIC

Part of Europa Biosite

Produktinformation



Forschungsprodukte & Biochemikalien



Zellkultur & Verbrauchsmaterial



Diagnostik & molekulare Diagnostik



Laborgeräte & Service

Weitere Information auf den folgenden Seiten!
See the following pages for more information!



Lieferung & Zahlungsart

siehe unsere [Liefer- und Versandbedingungen](#)

Zuschläge

- Mindermengenzuschlag
- Trockeneiszuschlag
- Gefahrgutzuschlag
- Expressversand

SZABO-SCANDIC HandelsgmbH

Quellenstraße 110, A-1100 Wien

T. +43(0)1 489 3961-0

F. +43(0)1 489 3961-7

mail@szabo-scandic.com

www.szabo-scandic.com

[linkedin.com/company/szaboscandic](https://www.linkedin.com/company/szaboscandic) 

Mouse Anti-Human IgE (Fc) antibody [B3102E8] (HRP)

Cat. No. GTX04184-01

| | |
|--------------------|---------------------------------|
| Host | Mouse |
| Clonality | Monoclonal |
| Isotype | IgG1 |
| Application | WB, ICC/IF, IHC-Fr, FACS, ELISA |
| Reactivity | Human |

Package
1 ml

APPLICATION

Application Note

*Optimal dilutions/concentrations should be determined by the researcher.

| Suggested dilution | Recommended dilution |
|--------------------|----------------------|
| WB | Assay dependent |
| ICC/IF | Assay dependent |
| IHC-Fr | Assay dependent |
| FACS | Assay dependent |
| ELISA | 1:1000-1:2000 |

Not tested in other applications.

PROPERTIES

| | |
|----------------------|---|
| Form | Liquid |
| Buffer | PBS, 50% glycerol |
| Preservative | No preservatives |
| Storage | Store as concentrated solution. Centrifuge briefly prior to opening vial. Store at 4°C. |
| Concentration | Batch dependent (Please refer to the vial label for the specific concentration.) |
| Purification | Purified IgG1 |
| Conjugation | Horseradish peroxidase(HRP) |

Note

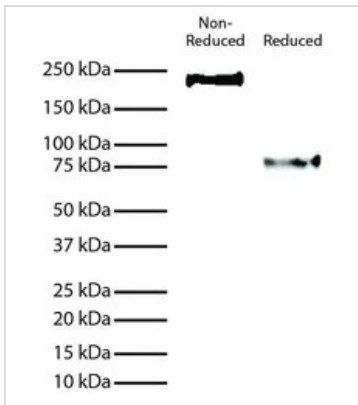
For laboratory research use only. Not for any clinical, therapeutic, or diagnostic use in humans or animals. Not for animal or human consumption.

Purchasers shall not, and agree not to enable third parties to, analyze, copy, reverse engineer or otherwise attempt to determine the structure or sequence of the product.



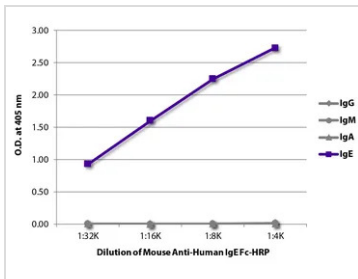
For full product information, images and publications, please visit our [website](#).

DATA IMAGES



GTX04184-01 WB Image

WB analysis of full length recombinant chimeric human IgE using GTX04184-01 Mouse Anti-Human IgE (Fc) antibody [B3102E8] (HRP).



GTX04184-01 ELISA Image

ELISA analysis of purified human immunoglobulins using serially diluted GTX04184-01 Mouse Anti-Human IgE (Fc) antibody [B3102E8] (HRP).



For full product information, images and publications, please visit our [website](#).