



SZABO SCANDIC

Part of Europa Biosite

Produktinformation



Forschungsprodukte & Biochemikalien



Zellkultur & Verbrauchsmaterial



Diagnostik & molekulare Diagnostik



Laborgeräte & Service

Weitere Information auf den folgenden Seiten!
See the following pages for more information!



Lieferung & Zahlungsart

siehe unsere [Liefer- und Versandbedingungen](#)

Zuschläge

- Mindermengenzuschlag
- Trockeneiszuschlag
- Gefahrgutzuschlag
- Expressversand

SZABO-SCANDIC HandelsgmbH

Quellenstraße 110, A-1100 Wien

T. +43(0)1 489 3961-0

F. +43(0)1 489 3961-7

mail@szabo-scandic.com

www.szabo-scandic.com

[linkedin.com/company/szaboscandic](https://www.linkedin.com/company/szaboscandic) 

Goat Anti-Mouse kappa light chain antibody, pre-adsorbed (AP)

Cat. No. GTX04201-03

Host	Goat
Clonality	Polyclonal
Isotype	IgG
Application	WB, ICC/IF, IHC-P, IHC-Fr, FACS, IP, ELISA, Activation, ELISPOT
Reactivity	Mouse

Package
1 ml

APPLICATION

Application Note

*Optimal dilutions/concentrations should be determined by the researcher.

Suggested dilution	Recommended dilution
WB	Assay dependent
ICC/IF	Assay dependent
IHC-P	Assay dependent
IHC-Fr	Assay dependent
FACS	Assay dependent
IP	Assay dependent
ELISA	1:2000-1:4000
Activation	Assay dependent
ELISPOT	Assay dependent

Not tested in other applications.

Product Note Pre-adsorbed with Mouse λ light chains. May react with κ light chains from other species.

PROPERTIES

Form	Liquid
Buffer	50 mM Tris, 1 mM MgCl ₂ , 50% Glycerol
Preservative	0.09% sodium azide
Storage	Store as concentrated solution. Centrifuge briefly prior to opening vial. Store at 4°C.
Concentration	Batch dependent (Please refer to the vial label for the specific concentration.)
Immunogen	Pooled antisera from goats hyperimmunized with mouse κ light chains
Purification	Purified by antigen-affinity chromatography



For full product information, images and publications, please visit our [website](#).

Conjugation

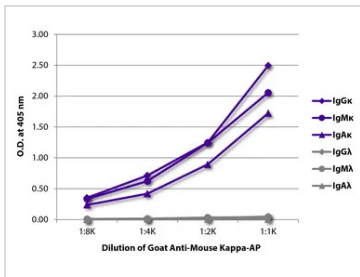
Alkaline Phosphatase (AP)

For laboratory research use only. Not for any clinical, therapeutic, or diagnostic use in humans or animals. Not for animal or human consumption.

Note

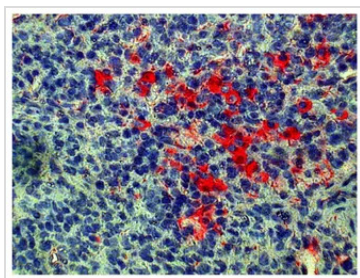
Purchasers shall not, and agree not to enable third parties to, analyze, copy, reverse engineer or otherwise attempt to determine the structure or sequence of the product.

DATA IMAGES



GTX04201-03 ELISA Image

ELISA analysis of purified mouse immunoglobulins using serially diluted GTX04201-03 Goat Anti-Mouse kappa light chain antibody, pre-adsorbed (AP).



GTX04201-03 IHC-P Image

IHC-P analysis of mouse spleen tissue using GTX04201-03 Goat Anti-Mouse kappa light chain antibody, pre-adsorbed (AP).



For full product information, images and publications, please visit our [website](#).