



# SZABO SCANDIC

Part of Europa Biosite

## Produktinformation



Forschungsprodukte & Biochemikalien



Zellkultur & Verbrauchsmaterial



Diagnostik & molekulare Diagnostik



Laborgeräte & Service

Weitere Information auf den folgenden Seiten!  
See the following pages for more information!



### Lieferung & Zahlungsart

siehe unsere [Liefer- und Versandbedingungen](#)

### Zuschläge

- Mindermengenzuschlag
- Trockeneiszuschlag
- Gefahrgutzuschlag
- Expressversand

### SZABO-SCANDIC HandelsgmbH

Quellenstraße 110, A-1100 Wien

T. +43(0)1 489 3961-0

F. +43(0)1 489 3961-7

[mail@szabo-scandic.com](mailto:mail@szabo-scandic.com)

[www.szabo-scandic.com](http://www.szabo-scandic.com)

[linkedin.com/company/szaboscandic](https://www.linkedin.com/company/szaboscandic) 

## Goat Anti-Mouse kappa light chain antibody, pre-adsorbed (TRITC)

Cat. No. GTX04201-25

<b>Host</b>	Goat
<b>Clonality</b>	Polyclonal
<b>Isotype</b>	IgG
<b>Application</b>	WB, ICC/IF, IHC-P, IHC-Fr, FACS, IP, ELISA, Activation, ELISPOT
<b>Reactivity</b>	Mouse

Package

1 mg

## APPLICATION

## Application Note

\*Optimal dilutions/concentrations should be determined by the researcher.

Suggested dilution	Recommended dilution
WB	Assay dependent
ICC/IF	Assay dependent
IHC-P	Assay dependent
IHC-Fr	Assay dependent
FACS	Assay dependent
IP	Assay dependent
ELISA	1:100-1:400
Activation	Assay dependent
ELISPOT	Assay dependent

Not tested in other applications.

**Product Note** Pre-adsorbed with Mouse  $\lambda$  light chains. May react with  $\kappa$  light chains from other species.

## PROPERTIES

<b>Form</b>	Liquid
<b>Buffer</b>	PBS
<b>Preservative</b>	0.09% sodium azide
<b>Storage</b>	Store as concentrated solution. Centrifuge briefly prior to opening vial. Store at 4°C. Protect from light.
<b>Concentration</b>	1 mg/ml (Please refer to the vial label for the specific concentration.)
<b>Immunogen</b>	Pooled antisera from goats hyperimmunized with mouse $\kappa$ light chains
<b>Purification</b>	Purified by antigen-affinity chromatography



For full product information, images and publications, please visit our [website](#).

**Conjugation**

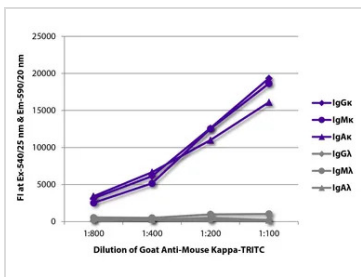
Tetramethylrhodamine (TRITC)

For laboratory research use only. Not for any clinical, therapeutic, or diagnostic use in humans or animals. Not for animal or human consumption.

**Note**

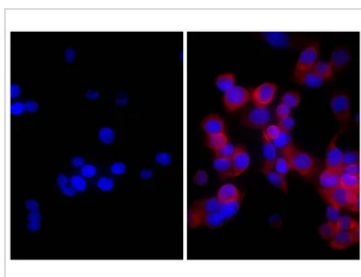
Purchasers shall not, and agree not to enable third parties to, analyze, copy, reverse engineer or otherwise attempt to determine the structure or sequence of the product.

DATA IMAGES



**GTX04201-25 ELISA Image**

ELISA analysis of purified mouse immunoglobulins using serially diluted GTX04201-25 Goat Anti-Mouse kappa light chain antibody, pre-adsorbed (TRITC).



**GTX04201-25 ICC/IF Image**

ICC/IF analysis of MIA PaCa-2 cells using Mouse Anti-Cytokeratin 18 antibody followed by GTX04201-25 Goat Anti-Mouse kappa light chain antibody, pre-adsorbed (TRITC).



For full product information, images and publications, please visit our [website](#).