



SZABO SCANDIC

Part of Europa Biosite

Produktinformation



Forschungsprodukte & Biochemikalien



Zellkultur & Verbrauchsmaterial



Diagnostik & molekulare Diagnostik



Laborgeräte & Service

Weitere Information auf den folgenden Seiten!
See the following pages for more information!



Lieferung & Zahlungsart

siehe unsere [Liefer- und Versandbedingungen](#)

Zuschläge

- Mindermengenzuschlag
- Trockeneiszuschlag
- Gefahrgutzuschlag
- Expressversand

SZABO-SCANDIC HandelsgmbH

Quellenstraße 110, A-1100 Wien

T. +43(0)1 489 3961-0

F. +43(0)1 489 3961-7

mail@szabo-scandic.com

www.szabo-scandic.com

[linkedin.com/company/szaboscandic](https://www.linkedin.com/company/szaboscandic) 

Goat Anti-Mouse kappa light chain antibody, F(ab')₂ fragment, pre-adsorbed (HRP)

Cat. No. GTX04202-01

Host	Goat
Clonality	Polyclonal
Isotype	IgG F(ab') ₂
Application	IHC-P, FACS, ELISA, Activation, ELISPOT
Reactivity	Mouse

Package

1 ml

APPLICATION

Application Note

*Optimal dilutions/concentrations should be determined by the researcher.

Suggested dilution	Recommended dilution
IHC-P	Assay dependent
FACS	Assay dependent
ELISA	1:4000-1:8000
Activation	Assay dependent
ELISPOT	Assay dependent

Not tested in other applications.

Product Note Pre-adsorbed with Mouse λ light chains. May react with κ light chains from other species.

PROPERTIES

Form	Liquid
Buffer	PBS, 50% glycerol
Preservative	No preservatives
Storage	Store as concentrated solution. Centrifuge briefly prior to opening vial. Store at 4°C.
Concentration	Batch dependent (Please refer to the vial label for the specific concentration.)
Immunogen	Pepsin digest of Goat Anti-Mouse Kappa.
Purification	Purified IgG
Conjugation	Horseradish peroxidase(HRP)



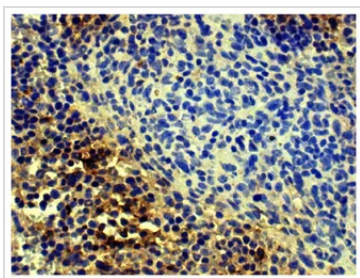
For full product information, images and publications, please visit our [website](#).

For laboratory research use only. Not for any clinical, therapeutic, or diagnostic use in humans or animals. Not for animal or human consumption.

Note

Purchasers shall not, and agree not to enable third parties to, analyze, copy, reverse engineer or otherwise attempt to determine the structure or sequence of the product.

DATA IMAGES

**GTX04202-01 IHC-P Image**

IHC-P analysis of mouse spleen tissue using GTX04202-01 Goat Anti-Mouse kappa light chain antibody, F(ab')₂ fragment, pre-adsorbed (HRP).



For full product information, images and publications, please visit our [website](#).