



# SZABO SCANDIC

Part of Europa Biosite

## Produktinformation



Forschungsprodukte & Biochemikalien



Zellkultur & Verbrauchsmaterial



Diagnostik & molekulare Diagnostik



Laborgeräte & Service

Weitere Information auf den folgenden Seiten!  
See the following pages for more information!



### Lieferung & Zahlungsart

siehe unsere [Liefer- und Versandbedingungen](#)

### Zuschläge

- Mindermengenzuschlag
- Trockeneiszuschlag
- Gefahrgutzuschlag
- Expressversand

### SZABO-SCANDIC HandelsgmbH

Quellenstraße 110, A-1100 Wien

T. +43(0)1 489 3961-0

F. +43(0)1 489 3961-7

[mail@szabo-scandic.com](mailto:mail@szabo-scandic.com)

[www.szabo-scandic.com](http://www.szabo-scandic.com)

[linkedin.com/company/szaboscandic](https://www.linkedin.com/company/szaboscandic) 

## Goat Anti-Mouse IgG1 (Heavy chain) antibody, pre-adsorbed (APC-Cy7)

## Cat. No. GTX04204-15

|                    |                                                                           |
|--------------------|---------------------------------------------------------------------------|
| <b>Host</b>        | Goat                                                                      |
| <b>Clonality</b>   | Polyclonal                                                                |
| <b>Isotype</b>     | IgG                                                                       |
| <b>Application</b> | WB, ICC/IF, IHC-P, IHC-Fr, IHC-Wm, FACS, ELISA, EM, ELISPOT, Multiplexing |
| <b>Reactivity</b>  | Mouse                                                                     |

Package  
250 µg

## APPLICATION

## Application Note

\*Optimal dilutions/concentrations should be determined by the researcher.

| Suggested dilution | Recommended dilution           |
|--------------------|--------------------------------|
| WB                 | Assay dependent                |
| ICC/IF             | Assay dependent                |
| IHC-P              | Assay dependent                |
| IHC-Fr             | Assay dependent                |
| IHC-Wm             | Assay dependent                |
| FACS               | ≤ 0.1 µg/10 <sup>6</sup> cells |
| ELISA              | Assay dependent                |
| EM                 | Assay dependent                |
| ELISPOT            | Assay dependent                |
| Multiplexing       | Assay dependent                |

**Note : The suggested use of these reagents is in a final volume of 100µl.**

Not tested in other applications.

## Product Note

Pre-adsorbed with Mouse IgG2a, IgG2b, IgG3, IgM, and IgA; human immunoglobulins and pooled sera. May react with immunoglobulins from other species.

## PROPERTIES

|                      |                                                                                                                            |
|----------------------|----------------------------------------------------------------------------------------------------------------------------|
| <b>Form</b>          | Liquid                                                                                                                     |
| <b>Buffer</b>        | PBS, a stabilizer                                                                                                          |
| <b>Preservative</b>  | 0.09% sodium azide                                                                                                         |
| <b>Storage</b>       | Store as concentrated solution. Centrifuge briefly prior to opening vial. Store at 4°C. DO NOT FREEZE. Protect from light. |
| <b>Concentration</b> | 0.25 mg/ml (Please refer to the vial label for the specific concentration.)                                                |



For full product information, images and publications, please visit our [website](#).

**Immunogen** Pooled antisera from goats hyperimmunized with mouse IgG1

**Purification** Purified by antigen-affinity chromatography

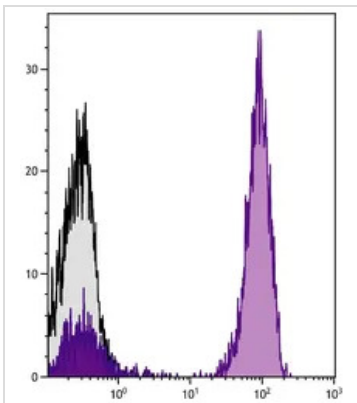
**Conjugation** Allophycocyanin-Cyanine7 (APC-Cy7)

**Note**

For laboratory research use only. Not for any clinical, therapeutic, or diagnostic use in humans or animals. Not for animal or human consumption.

Purchasers shall not, and agree not to enable third parties to, analyze, copy, reverse engineer or otherwise attempt to determine the structure or sequence of the product.

DATA IMAGES



**GTX04204-15 FACS Image**

FACS analysis of human peripheral blood lymphocytes using Mouse Anti-Human CD3 antibody followed by GTX04204-15 Goat Anti-Mouse IgG1 (Heavy chain) antibody, pre-adsorbed (APC-Cy7).



For full product information, images and publications, please visit our [website](#).