



SZABO SCANDIC

Part of Europa Biosite

Produktinformation



Forschungsprodukte & Biochemikalien



Zellkultur & Verbrauchsmaterial



Diagnostik & molekulare Diagnostik



Laborgeräte & Service

Weitere Information auf den folgenden Seiten!
See the following pages for more information!



Lieferung & Zahlungsart

siehe unsere [Liefer- und Versandbedingungen](#)

Zuschläge

- Mindermengenzuschlag
- Trockeneiszuschlag
- Gefahrgutzuschlag
- Expressversand

SZABO-SCANDIC HandelsgmbH

Quellenstraße 110, A-1100 Wien

T. +43(0)1 489 3961-0

F. +43(0)1 489 3961-7

mail@szabo-scandic.com

www.szabo-scandic.com

[linkedin.com/company/szaboscandic](https://www.linkedin.com/company/szaboscandic) 

Goat Anti-Mouse IgG2b (Heavy chain) antibody, pre-adsorbed (TRITC)

Cat. No. GTX04214-25

Host	Goat
Clonality	Polyclonal
Isotype	IgG
Application	WB, ICC/IF, IHC-P, IHC-Fr, IHC-Wm, FACS, ELISA, ELISPOT
Reactivity	Mouse

Package
1 mg

APPLICATION

Application Note

*Optimal dilutions/concentrations should be determined by the researcher.

Suggested dilution	Recommended dilution
WB	Assay dependent
ICC/IF	Assay dependent
IHC-P	Assay dependent
IHC-Fr	Assay dependent
IHC-Wm	Assay dependent
FACS	Assay dependent
ELISA	1:100-1:400
ELISPOT	Assay dependent

Not tested in other applications.

Product Note

Pre-adsorbed with Mouse IgG1, IgG2a, IgG3, IgM, and IgA; human immunoglobulins and pooled sera. May react with immunoglobulins from other species.

PROPERTIES

Form	Liquid
Buffer	PBS
Preservative	0.09% sodium azide
Storage	Store as concentrated solution. Centrifuge briefly prior to opening vial. Store at 4°C. Protect from light.
Concentration	1 mg/ml (Please refer to the vial label for the specific concentration.)
Immunogen	Pooled antisera from goats hyperimmunized with mouse IgG2b
Purification	Purified by antigen-affinity chromatography



For full product information, images and publications, please visit our [website](#).

Conjugation

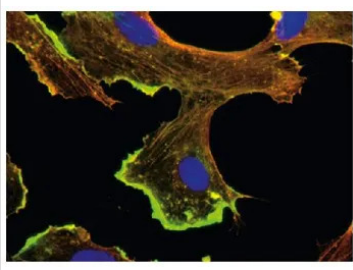
Tetramethylrhodamine (TRITC)

Note

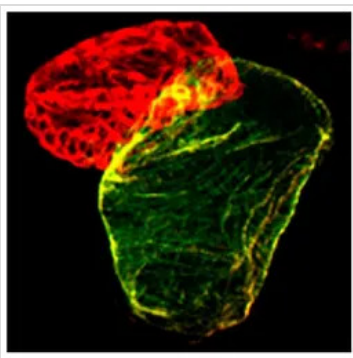
For laboratory research use only. Not for any clinical, therapeutic, or diagnostic use in humans or animals. Not for animal or human consumption.

Purchasers shall not, and agree not to enable third parties to, analyze, copy, reverse engineer or otherwise attempt to determine the structure or sequence of the product.

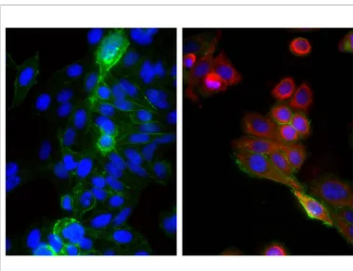
DATA IMAGES

**GTX04214-25 ICC/IF Image**

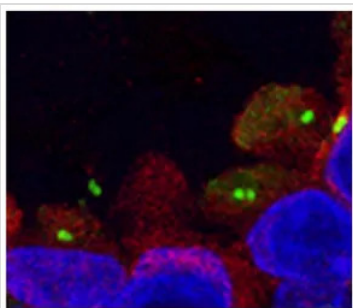
ICC/IF analysis of BMH29L cells using beta actin antibody and actin gamma 1 antibody followed by GTX04214-25 Goat Anti-Mouse IgG2b (Heavy chain) antibody, pre-adsorbed (TRITC) and Goat Anti-Mouse IgG1, pre-adsorbed (FITC).

**GTX04214-25 IHC-Wm Image**

IHC-Wm analysis of zebrafish embryos using atrial myosin heavy chain antibody and sacromeric myosin heavy chain antibody followed by GTX04214-25 Goat Anti-Mouse IgG2b (Heavy chain) antibody, pre-adsorbed (TRITC) and Goat Anti-Mouse IgG1, pre-adsorbed (FITC).

**GTX04214-25 ICC/IF Image**

ICC/IF analysis of HEP-2 cells using Mouse Anti-Cytokeratin 18 antibody and Mouse Anti-Human CD44 antibody (FITC) followed by GTX04214-25 Goat Anti-Mouse IgG2b (Heavy chain) antibody, pre-adsorbed (TRITC).

**GTX04214-25 IHC-P Image**

IHC-P analysis of human breast tissue using acetylated tubulin antibody and gamma tubulin antibody followed by GTX04214-25 Goat Anti-Mouse IgG2b (Heavy chain) antibody, pre-adsorbed (TRITC).



For full product information, images and publications, please visit our [website](#).