



SZABO SCANDIC

Part of Europa Biosite

Produktinformation



Forschungsprodukte & Biochemikalien



Zellkultur & Verbrauchsmaterial



Diagnostik & molekulare Diagnostik



Laborgeräte & Service

Weitere Information auf den folgenden Seiten!
See the following pages for more information!



Lieferung & Zahlungsart

siehe unsere [Liefer- und Versandbedingungen](#)

Zuschläge

- Mindermengenzuschlag
- Trockeneiszuschlag
- Gefahrgutzuschlag
- Expressversand

SZABO-SCANDIC HandelsgmbH

Quellenstraße 110, A-1100 Wien

T. +43(0)1 489 3961-0

F. +43(0)1 489 3961-7

mail@szabo-scandic.com

www.szabo-scandic.com

[linkedin.com/company/szaboscandic](https://www.linkedin.com/company/szaboscandic) 

Goat Anti-Mouse IgG2b (Heavy chain) antibody, pre-adsorbed (AP)

Cat. No. GTX04215-03

Host	Goat
Clonality	Polyclonal
Isotype	IgG
Application	ELISA
Reactivity	Mouse

Package
1 ml

APPLICATION

Application Note

*Optimal dilutions/concentrations should be determined by the researcher.

Suggested dilution	Recommended dilution
ELISA	1:2000-1:4000

Not tested in other applications.

Product Note Pre-adsorbed with Mouse IgG1, IgG2a, IgG3, IgM, and IgA. May react with immunoglobulins from other species.

PROPERTIES

Form	Liquid
Buffer	50 mM Tris, 1 mM MgCl ₂ , 50% Glycerol
Preservative	0.09% sodium azide
Storage	Store as concentrated solution. Centrifuge briefly prior to opening vial. Store at 4°C.
Concentration	Batch dependent (Please refer to the vial label for the specific concentration.)
Immunogen	Pooled antisera from goats hyperimmunized with mouse IgG2b
Purification	Purified by antigen-affinity chromatography
Conjugation	Alkaline Phosphatase (AP)

Note

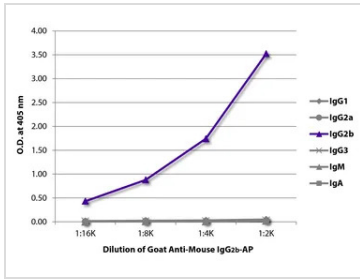
For laboratory research use only. Not for any clinical, therapeutic, or diagnostic use in humans or animals. Not for animal or human consumption.

Purchasers shall not, and agree not to enable third parties to, analyze, copy, reverse engineer or otherwise attempt to determine the structure or sequence of the product.



For full product information, images and publications, please visit our [website](#).

DATA IMAGES



GTX04215-03 ELISA Image

ELISA analysis of purified mouse immunoglobulins using serially diluted GTX04215-03 Goat Anti-Mouse IgG2b (Heavy chain) antibody, pre-adsorbed (AP).



For full product information, images and publications, please visit our [website](#).