



# SZABO SCANDIC

Part of Europa Biosite

## Produktinformation



Forschungsprodukte & Biochemikalien



Zellkultur & Verbrauchsmaterial



Diagnostik & molekulare Diagnostik



Laborgeräte & Service

Weitere Information auf den folgenden Seiten!  
See the following pages for more information!



### Lieferung & Zahlungsart

siehe unsere [Liefer- und Versandbedingungen](#)

### Zuschläge

- Mindermengenzuschlag
- Trockeneiszuschlag
- Gefahrgutzuschlag
- Expressversand

### SZABO-SCANDIC HandelsgmbH

Quellenstraße 110, A-1100 Wien

T. +43(0)1 489 3961-0

F. +43(0)1 489 3961-7

[mail@szabo-scandic.com](mailto:mail@szabo-scandic.com)

[www.szabo-scandic.com](http://www.szabo-scandic.com)

[linkedin.com/company/szaboscandic](https://www.linkedin.com/company/szaboscandic) 

# Goat Anti-Mouse IgG2b (Heavy chain) antibody, F(ab')<sub>2</sub> fragment, pre-adsorbed (Biotin)

## Cat. No. GTX04216-02

<b>Host</b>	Goat
<b>Clonality</b>	Polyclonal
<b>Isotype</b>	IgG F(ab') <sub>2</sub>
<b>Application</b>	ICC/IF, FACS, ELISA
<b>Reactivity</b>	Mouse

Package  
500 µg

### APPLICATION

#### Application Note

\*Optimal dilutions/concentrations should be determined by the researcher.

Suggested dilution	Recommended dilution
ICC/IF	Assay dependent
FACS	≤ 1 µg/10 <sup>6</sup> cells
ELISA	1:5000-1:10000

**Note : The suggested use of these reagents is in a final volume of 100µl.**

Not tested in other applications.

#### Product Note

Pre-adsorbed with Mouse IgG1, IgG2a, IgG3, IgM, and IgA; human immunoglobulins and pooled sera. May react with immunoglobulins from other species.

### PROPERTIES

<b>Form</b>	Liquid
<b>Buffer</b>	PBS
<b>Preservative</b>	0.09% sodium azide
<b>Storage</b>	Store as concentrated solution. Centrifuge briefly prior to opening vial. Store at 4°C.
<b>Concentration</b>	0.5 mg/ml (Please refer to the vial label for the specific concentration.)
<b>Immunogen</b>	Pepsin digest of Goat Anti-Mouse IgG2b.
<b>Purification</b>	Purified IgG
<b>Conjugation</b>	Biotin

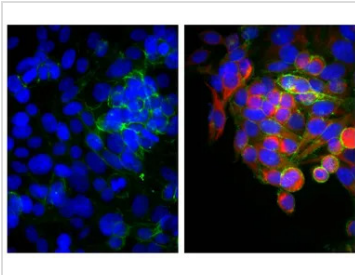


For full product information, images and publications, please visit our [website](#).

For laboratory research use only. Not for any clinical, therapeutic, or diagnostic use in humans or animals. Not for animal or human consumption.

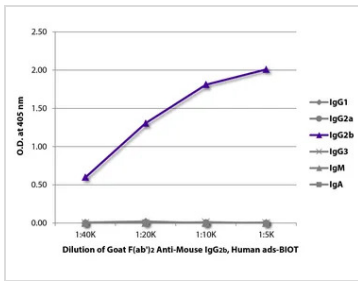
**Note**  
 Purchasers shall not, and agree not to enable third parties to, analyze, copy, reverse engineer or otherwise attempt to determine the structure or sequence of the product.

DATA IMAGES



**GTX04216-02 ICC/IF Image**

ICC/IF analysis of HEp-2 cells using Mouse Anti-Cytokeratin 18 antibody and Mouse Anti-Human CD44 antibody (FITC) followed by GTX04216-02 Goat Anti-Mouse IgG2b (Heavy chain) antibody, F(ab')<sub>2</sub> fragment, pre-adsorbed (Biotin) and Streptavidin (CY3).



**GTX04216-02 ELISA Image**

ELISA analysis of purified mouse immunoglobulins using serially diluted GTX04216-02 Goat Anti-Mouse IgG2b (Heavy chain) antibody, F(ab')<sub>2</sub> fragment, pre-adsorbed (Biotin) followed by Streptavidin (HRP).



For full product information, images and publications, please visit our [website](#).