



SZABO SCANDIC

Part of Europa Biosite

Produktinformation



Forschungsprodukte & Biochemikalien



Zellkultur & Verbrauchsmaterial



Diagnostik & molekulare Diagnostik



Laborgeräte & Service

Weitere Information auf den folgenden Seiten!
See the following pages for more information!



Lieferung & Zahlungsart

siehe unsere [Liefer- und Versandbedingungen](#)

Zuschläge

- Mindermengenzuschlag
- Trockeneiszuschlag
- Gefahrgutzuschlag
- Expressversand

SZABO-SCANDIC HandelsgmbH

Quellenstraße 110, A-1100 Wien

T. +43(0)1 489 3961-0

F. +43(0)1 489 3961-7

mail@szabo-scandic.com

www.szabo-scandic.com

[linkedin.com/company/szaboscandic](https://www.linkedin.com/company/szaboscandic) 

Goat Anti-Mouse IgG2b (Heavy chain) antibody, F(ab')₂ fragment, pre-adsorbed (FITC)

Cat. No. GTX04216-06

Host	Goat
Clonality	Polyclonal
Isotype	IgG F(ab') ₂
Application	ICC/IF, FACS, ELISA
Reactivity	Mouse

Package
500 µg

APPLICATION

Application Note

*Optimal dilutions/concentrations should be determined by the researcher.

Suggested dilution	Recommended dilution
ICC/IF	Assay dependent
FACS	≤ 1 µg/10 ⁶ cells
ELISA	1:200-1:400

Note : The suggested use of these reagents is in a final volume of 100µl.

Not tested in other applications.

Product Note

Pre-adsorbed with Mouse IgG1, IgG2a, IgG3, IgM, and IgA; human immunoglobulins and pooled sera. May react with immunoglobulins from other species.

PROPERTIES

Form	Liquid
Buffer	PBS
Preservative	0.09% sodium azide
Storage	Store as concentrated solution. Centrifuge briefly prior to opening vial. Store at 4°C. Protect from light.
Concentration	0.5 mg/ml (Please refer to the vial label for the specific concentration.)
Immunogen	Pepsin digest of Goat Anti-Mouse IgG2b.
Purification	Purified IgG
Conjugation	Fluorescein isothiocyanate (FITC)



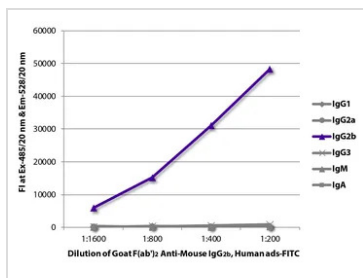
For full product information, images and publications, please visit our [website](#).

For laboratory research use only. Not for any clinical, therapeutic, or diagnostic use in humans or animals. Not for animal or human consumption.

Note

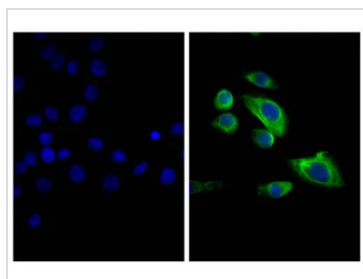
Purchasers shall not, and agree not to enable third parties to, analyze, copy, reverse engineer or otherwise attempt to determine the structure or sequence of the product.

DATA IMAGES



GTX04216-06 ELISA Image

ELISA analysis of purified mouse immunoglobulins using serially diluted GTX04216-06 Goat Anti-Mouse IgG2b (Heavy chain) antibody, F(ab')₂ fragment, pre-adsorbed (FITC).



GTX04216-06 ICC/IF Image

ICC/IF analysis of MIA PaCa-2 cells using Mouse Anti-Cytokeratin 18 antibody followed by GTX04216-06 Goat Anti-Mouse IgG2b (Heavy chain) antibody, F(ab')₂ fragment, pre-adsorbed (FITC).



For full product information, images and publications, please visit our [website](#).