



# SZABO SCANDIC

Part of Europa Biosite

## Produktinformation



Forschungsprodukte & Biochemikalien



Zellkultur & Verbrauchsmaterial



Diagnostik & molekulare Diagnostik



Laborgeräte & Service

Weitere Information auf den folgenden Seiten!  
See the following pages for more information!



### Lieferung & Zahlungsart

siehe unsere [Liefer- und Versandbedingungen](#)

### Zuschläge

- Mindermengenzuschlag
- Trockeneiszuschlag
- Gefahrgutzuschlag
- Expressversand

### SZABO-SCANDIC HandelsgmbH

Quellenstraße 110, A-1100 Wien

T. +43(0)1 489 3961-0

F. +43(0)1 489 3961-7

[mail@szabo-scandic.com](mailto:mail@szabo-scandic.com)

[www.szabo-scandic.com](http://www.szabo-scandic.com)

[linkedin.com/company/szaboscandic](https://www.linkedin.com/company/szaboscandic) 

## Goat Anti-Mouse IgG2b (Heavy chain) antibody, pre-adsorbed (Biotin)

Cat. No. GTX04217-02

<b>Host</b>	Goat
<b>Clonality</b>	Polyclonal
<b>Isotype</b>	IgG
<b>Application</b>	WB, ICC/IF, ELISA
<b>Reactivity</b>	Mouse

Package  
1 mg

## APPLICATION

## Application Note

\*Optimal dilutions/concentrations should be determined by the researcher.

Suggested dilution	Recommended dilution
WB	Assay dependent
ICC/IF	Assay dependent
ELISA	1:5000-1:20000

Not tested in other applications.

## Product Note

Pre-adsorbed with Mouse IgG1, IgG2a, IgG3, IgM, and IgA; human, bovine, and horse serum proteins (SP). May react with immunoglobulins from other species.

## PROPERTIES

<b>Form</b>	Liquid
<b>Buffer</b>	PBS
<b>Preservative</b>	0.09% sodium azide
<b>Storage</b>	Store as concentrated solution. Centrifuge briefly prior to opening vial. Store at 4°C.
<b>Concentration</b>	0.5 mg/ml (Please refer to the vial label for the specific concentration.)
<b>Immunogen</b>	Pooled antisera from goats hyperimmunized with mouse IgG2b
<b>Purification</b>	Purified by antigen-affinity chromatography
<b>Conjugation</b>	Biotin

## Note

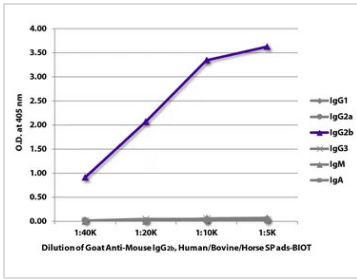
For laboratory research use only. Not for any clinical, therapeutic, or diagnostic use in humans or animals. Not for animal or human consumption.

Purchasers shall not, and agree not to enable third parties to, analyze, copy, reverse engineer or otherwise attempt to determine the structure or sequence of the product.



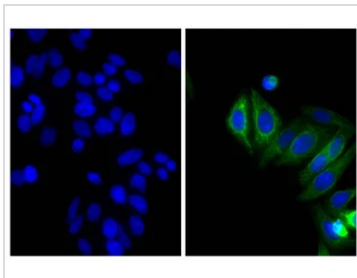
For full product information, images and publications, please visit our [website](#).

DATA IMAGES



**GTX04217-02 ELISA Image**

ELISA analysis of purified mouse immunoglobulins using serially diluted GTX04217-02 Goat Anti-Mouse IgG2b (Heavy chain) antibody, pre-adsorbed (Biotin) followed by Streptavidin (HRP).



**GTX04217-02 ICC/IF Image**

ICC/IF analysis of HEP-2 cells using Mouse Anti-Cytokeratin 18 antibody followed by GTX04217-02 Goat Anti-Mouse IgG2b (Heavy chain) antibody, pre-adsorbed (Biotin) and Streptavidin (CY2).



For full product information, images and publications, please visit our [website](#).