



SZABO SCANDIC

Part of Europa Biosite

Produktinformation



Forschungsprodukte & Biochemikalien



Zellkultur & Verbrauchsmaterial



Diagnostik & molekulare Diagnostik



Laborgeräte & Service

Weitere Information auf den folgenden Seiten!
See the following pages for more information!



Lieferung & Zahlungsart

siehe unsere [Liefer- und Versandbedingungen](#)

Zuschläge

- Mindermengenzuschlag
- Trockeneiszuschlag
- Gefahrgutzuschlag
- Expressversand

SZABO-SCANDIC HandelsgmbH

Quellenstraße 110, A-1100 Wien

T. +43(0)1 489 3961-0

F. +43(0)1 489 3961-7

mail@szabo-scandic.com

www.szabo-scandic.com

[linkedin.com/company/szaboscandic](https://www.linkedin.com/company/szaboscandic) 

Rat Anti-Mouse IgG2a antibody [SB84a] (FITC)

Cat. No. GTX04227-06

Host	Rat
Clonality	Monoclonal
Isotype	IgG1
Application	WB, ICC/IF, IHC-Fr, FACS, ELISA, Multiplexing
Reactivity	Mouse

Package
500 µg

APPLICATION

Application Note

*Optimal dilutions/concentrations should be determined by the researcher.

Suggested dilution	Recommended dilution
WB	Assay dependent
ICC/IF	Assay dependent
IHC-Fr	Assay dependent
FACS	$\leq 1 \mu\text{g}/10^6\text{cells}$
ELISA	1:200-1:400
Multiplexing	Assay dependent

Note : The suggested use of these reagents is in a final volume of 100µl.

Not tested in other applications.

PROPERTIES

Form	Liquid
Buffer	PBS
Preservative	0.09% sodium azide
Storage	Store as concentrated solution. Centrifuge briefly prior to opening vial. Store at 4°C. Protect from light.
Concentration	0.5 mg/ml (Please refer to the vial label for the specific concentration.)
Immunogen	Mouse IgG2a hybridoma
Purification	Purified IgG1
Conjugation	Fluorescein isothiocyanate (FITC)

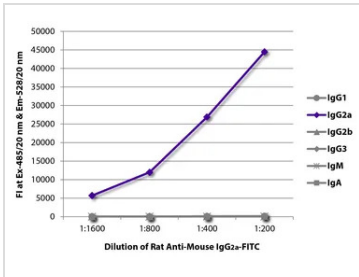


For full product information, images and publications, please visit our [website](#).

For laboratory research use only. Not for any clinical, therapeutic, or diagnostic use in humans or animals. Not for animal or human consumption.

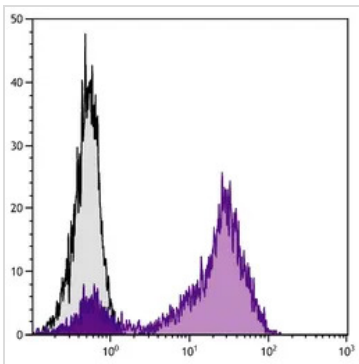
Note
 Purchasers shall not, and agree not to enable third parties to, analyze, copy, reverse engineer or otherwise attempt to determine the structure or sequence of the product.

DATA IMAGES



GTX04227-06 ELISA Image

ELISA analysis of purified mouse immunoglobulins using serially diluted GTX04227-06 Rat Anti-Mouse IgG2a antibody [SB84a] (FITC).



GTX04227-06 FACS Image

FACS analysis of human peripheral blood lymphocytes using Mouse Anti-Human CD5 antibody followed by GTX04227-06 Rat Anti-Mouse IgG2a antibody [SB84a] (FITC).



For full product information, images and publications, please visit our [website](#).