



# SZABO SCANDIC

Part of Europa Biosite

## Produktinformation



Forschungsprodukte & Biochemikalien



Zellkultur & Verbrauchsmaterial



Diagnostik & molekulare Diagnostik



Laborgeräte & Service

Weitere Information auf den folgenden Seiten!  
See the following pages for more information!



### Lieferung & Zahlungsart

siehe unsere [Liefer- und Versandbedingungen](#)

### Zuschläge

- Mindermengenzuschlag
- Trockeneiszuschlag
- Gefahrgutzuschlag
- Expressversand

### SZABO-SCANDIC HandelsgmbH

Quellenstraße 110, A-1100 Wien

T. +43(0)1 489 3961-0

F. +43(0)1 489 3961-7

[mail@szabo-scandic.com](mailto:mail@szabo-scandic.com)

[www.szabo-scandic.com](http://www.szabo-scandic.com)

[linkedin.com/company/szaboscandic](https://www.linkedin.com/company/szaboscandic) 

## Rat Anti-Mouse lambda light chain antibody [JC5-1] (Biotin)

Cat. No. GTX04229-02

<b>Host</b>	Rat
<b>Clonality</b>	Monoclonal
<b>Isotype</b>	IgG2b
<b>Application</b>	IHC-P, IHC-Fr, FACS, IP, ELISA, Activation, PLA
<b>Reactivity</b>	Mouse

Package  
500 µg

## APPLICATION

## Application Note

\*Optimal dilutions/concentrations should be determined by the researcher.

Suggested dilution	Recommended dilution
--------------------	----------------------

IHC-P	Assay dependent
-------	-----------------

IHC-Fr	Assay dependent
--------	-----------------

FACS	$\leq 1 \mu\text{g}/10^6\text{cells}$
------	---------------------------------------

IP	Assay dependent
----	-----------------

ELISA	1:5000-1:10000
-------	----------------

Activation	Assay dependent
------------	-----------------

PLA	Assay dependent
-----	-----------------

**Note : Use it on non-reducing condition.**

**The suggested use of these reagents is in a final volume of 100µl.**

Not tested in other applications.

## PROPERTIES

<b>Form</b>	Liquid
-------------	--------

<b>Buffer</b>	PBS
---------------	-----

<b>Preservative</b>	0.09% sodium azide
---------------------	--------------------

<b>Storage</b>	Store as concentrated solution. Centrifuge briefly prior to opening vial. Store at 4°C.
----------------	-----------------------------------------------------------------------------------------

<b>Concentration</b>	0.5 mg/ml (Please refer to the vial label for the specific concentration.)
----------------------	----------------------------------------------------------------------------

<b>Purification</b>	Purified IgG2b
---------------------	----------------

<b>Conjugation</b>	Biotin
--------------------	--------

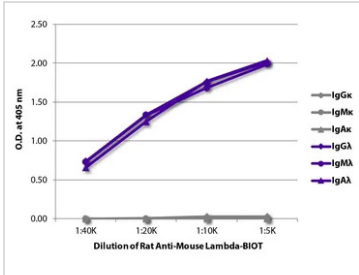


For full product information, images and publications, please visit our [website](#).

For laboratory research use only. Not for any clinical, therapeutic, or diagnostic use in humans or animals. Not for animal or human consumption.

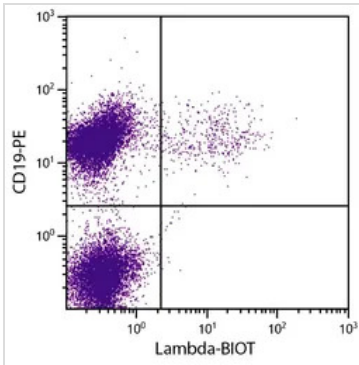
**Note**  
 Purchasers shall not, and agree not to enable third parties to, analyze, copy, reverse engineer or otherwise attempt to determine the structure or sequence of the product.

DATA IMAGES



**GTX04229-02 ELISA Image**

ELISA analysis of purified mouse immunoglobulins using serially diluted GTX04229-02 Rat Anti-Mouse lambda light chain antibody [JC5-1] (Biotin) followed by Streptavidin (HRP).



**GTX04229-02 FACS Image**

FACS analysis of BALB/c mouse splenocytes using Rat Anti-Mouse CD19 antibody (PE) and GTX04229-02 Rat Anti-Mouse lambda light chain antibody [JC5-1] (Biotin) followed by Streptavidin (FITC).



For full product information, images and publications, please visit our [website](#).