



SZABO SCANDIC

Part of Europa Biosite

Produktinformation



Forschungsprodukte & Biochemikalien



Zellkultur & Verbrauchsmaterial



Diagnostik & molekulare Diagnostik



Laborgeräte & Service

Weitere Information auf den folgenden Seiten!
See the following pages for more information!



Lieferung & Zahlungsart

siehe unsere [Liefer- und Versandbedingungen](#)

Zuschläge

- Mindermengenzuschlag
- Trockeneiszuschlag
- Gefahrgutzuschlag
- Expressversand

SZABO-SCANDIC HandelsgmbH

Quellenstraße 110, A-1100 Wien

T. +43(0)1 489 3961-0

F. +43(0)1 489 3961-7

mail@szabo-scandic.com

www.szabo-scandic.com

[linkedin.com/company/szaboscandic](https://www.linkedin.com/company/szaboscandic) 

GLI3 antibody

Cat. No. GTX04242

Host	Rabbit
Clonality	Polyclonal
Isotype	IgG
Application	WB, IHC-P
Reactivity	Human, Mouse, Rat

Package
100 µl

APPLICATION

Application Note

*Optimal dilutions/concentrations should be determined by the researcher.

Suggested dilution	Recommended dilution
WB	1:500-1:2000
IHC-P	1:50-1:200

Not tested in other applications.

Calculated MW 170 kDa. ([Note](#))

PROPERTIES

Form	Liquid
Buffer	PBS, 50% Glycerol
Preservative	0.01% thiomersal
Storage	Store as concentrated solution. Centrifuge briefly prior to opening vial. For short-term storage (1-2 weeks), store at 4°C. For long-term storage, aliquot and store at -20°C or below. Avoid multiple freeze-thaw cycles.
Concentration	Batch dependent (Please refer to the vial label for the specific concentration.)
Immunogen	A synthetic peptide corresponding to a sequence within amino acids 800-900 of human GLI3 (NP_000159.3).
Purification	Purified by affinity chromatography
Conjugation	Unconjugated

Note

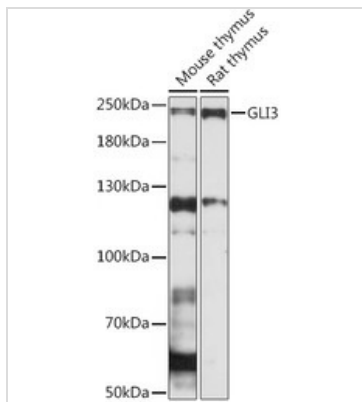
For laboratory research use only. Not for any clinical, therapeutic, or diagnostic use in humans or animals. Not for animal or human consumption.

Purchasers shall not, and agree not to enable third parties to, analyze, copy, reverse engineer or otherwise attempt to determine the structure or sequence of the product.



For full product information, images and publications, please visit our [website](#).

DATA IMAGES

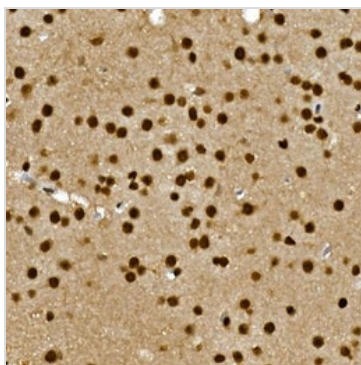
**GTX04242 WB Image**

WB analysis of various tissue lysates using GTX0424 GLI3 antibody.

Loading : 25 µg

Dilution : 1:1000

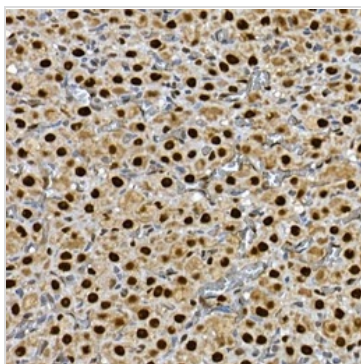
Blocking buffer: 3% nonfat dry milk in TBST

**GTX04242 IHC-P Image**

IHC-P analysis of rat brain tissue using GTX0424 GLI3 antibody.

Antigen retrieval : Perform high pressure antigen retrieval with 10 mM citrate buffer pH 6.0.

Dilution : 1:100

**GTX04242 IHC-P Image**

IHC-P analysis of rat ovary tissue using GTX0424 GLI3 antibody.

Antigen retrieval : Perform high pressure antigen retrieval with 10 mM citrate buffer pH 6.0.

Dilution : 1:100



For full product information, images and publications, please visit our [website](#).