



SZABO SCANDIC

Part of Europa Biosite

Produktinformation



Forschungsprodukte & Biochemikalien



Zellkultur & Verbrauchsmaterial



Diagnostik & molekulare Diagnostik



Laborgeräte & Service

Weitere Information auf den folgenden Seiten!
See the following pages for more information!



Lieferung & Zahlungsart

siehe unsere [Liefer- und Versandbedingungen](#)

Zuschläge

- Mindermengenzuschlag
- Trockeneiszuschlag
- Gefahrgutzuschlag
- Expressversand

SZABO-SCANDIC HandelsgmbH

Quellenstraße 110, A-1100 Wien

T. +43(0)1 489 3961-0

F. +43(0)1 489 3961-7

mail@szabo-scandic.com

www.szabo-scandic.com

[linkedin.com/company/szaboscandic](https://www.linkedin.com/company/szaboscandic) 

SGLT1 antibody

Cat. No. GTX04243

Host	Rabbit
Clonality	Polyclonal
Isotype	IgG
Application	WB, IHC-P
Reactivity	Human, Mouse, Rat, Dog

Package
100 µl

APPLICATION

Application Note

*Optimal dilutions/concentrations should be determined by the researcher.

Suggested dilution	Recommended dilution
WB	1:300-1:5000
IHC-P	1:200-1:400

Not tested in other applications.

Calculated MW 73 kDa. ([Note](#))

PROPERTIES

Form	Liquid
Buffer	0.01M TBS, 1% BSA, 50% Glycerol
Preservative	0.03% Proclin300
Storage	Store as concentrated solution. Centrifuge briefly prior to opening vial. For short-term storage (1-2 weeks), store at 4°C. For long-term storage, aliquot and store at -21°C or below. Avoid multiple freeze-thaw cycles.
Concentration	1 mg/ml (Please refer to the vial label for the specific concentration.)
Immunogen	KLH conjugated synthetic peptide derived from mouse SGLT(401-500).
Purification	Protein A purified
Conjugation	Unconjugated

Note

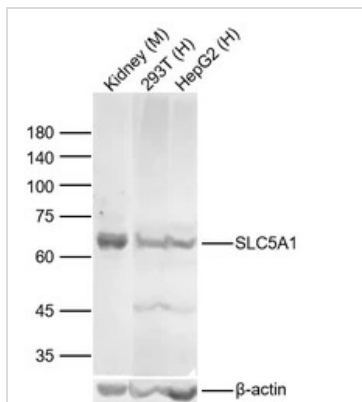
For laboratory research use only. Not for any clinical, therapeutic, or diagnostic use in humans or animals. Not for animal or human consumption.

Purchasers shall not, and agree not to enable third parties to, analyze, copy, reverse engineer or otherwise attempt to determine the structure or sequence of the product.



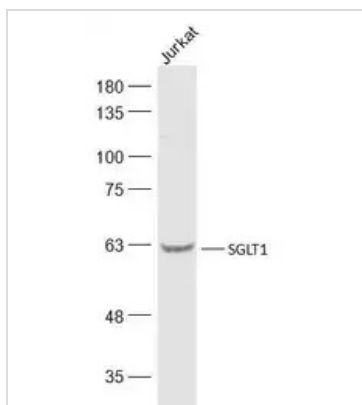
For full product information, images and publications, please visit our [website](#).

DATA IMAGES



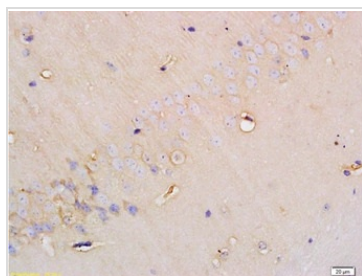
GTX04243 WB Image

WB analysis of various lysates using GTX04243 SGLT antibody.
Dilution : 1:1000



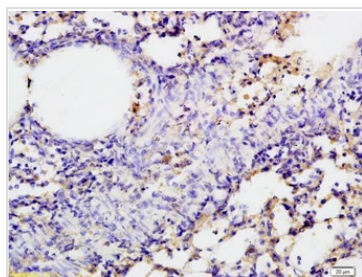
GTX04243 WB Image

WB analysis of Jurkat lysates using GTX04243 SGLT antibody.
Dilution : 1:500



GTX04243 IHC-P Image

IHC-P analysis of rat brain tissue using GTX04243 SGLT antibody.
Dilution : 1:200



GTX04243 IHC-P Image

IHC-P analysis of rat lung tissue using GTX04243 SGLT antibody.
Dilution : 1:200



For full product information, images and publications, please visit our [website](#).