



SZABO SCANDIC

Part of Europa Biosite

Produktinformation



Forschungsprodukte & Biochemikalien



Zellkultur & Verbrauchsmaterial



Diagnostik & molekulare Diagnostik



Laborgeräte & Service

Weitere Information auf den folgenden Seiten!
See the following pages for more information!



Lieferung & Zahlungsart

siehe unsere [Liefer- und Versandbedingungen](#)

Zuschläge

- Mindermengenzuschlag
- Trockeneiszuschlag
- Gefahrgutzuschlag
- Expressversand

SZABO-SCANDIC HandelsgmbH

Quellenstraße 110, A-1100 Wien

T. +43(0)1 489 3961-0

F. +43(0)1 489 3961-7

mail@szabo-scandic.com

www.szabo-scandic.com

[linkedin.com/company/szaboscandic](https://www.linkedin.com/company/szaboscandic) 

CIP2A antibody [2G10]

Cat. No. GTX04245

Host	Mouse
Clonality	Monoclonal
Isotype	IgG2b
Application	WB, ICC/IF, IHC-P, FACS, ELISA
Reactivity	Human, Mouse, Rat, Hamster, Monkey

Reference (1)
Package
100 µl

APPLICATION

Application Note

*Optimal dilutions/concentrations should be determined by the researcher.

Suggested dilution	Recommended dilution
WB	1:1000-1:2000
ICC/IF	1:40
IHC-P	1:100-1:200
FACS	1 µg/1*10 ⁶
ELISA	Assay dependent

Not tested in other applications.

Calculated MW 102 kDa. ([Note](#))

PROPERTIES

Form	Liquid
Buffer	Tris-Glycine/0.15M NaCl
Preservative	0.05% sodium azide
Storage	Store as concentrated solution. Centrifuge briefly prior to opening vial. For short-term storage (1-2 weeks), store at 4°C. For long-term storage, aliquot and store at -20°C or below. Avoid multiple freeze-thaw cycles.
Concentration	1 mg/ml (Please refer to the vial label for the specific concentration.)
Immunogen	A synthetic peptide made to a C-terminal portion of the human CIP2A protein.
Purification	Protein G purified
Conjugation	Unconjugated



For full product information, images and publications, please visit our [website](#).

For laboratory research use only. Not for any clinical, therapeutic, or diagnostic use in humans or animals. Not for animal or human consumption.

Note

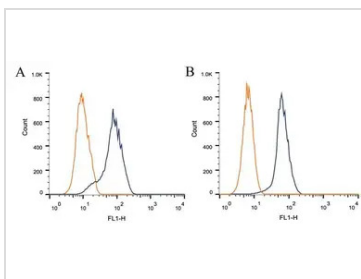
Purchasers shall not, and agree not to enable third parties to, analyze, copy, reverse engineer or otherwise attempt to determine the structure or sequence of the product.

DATA IMAGES



GTX04245 WB Image

WB analysis of NIH-3T3 cell lysates using GTX04245 CIP2A antibody [2G10].



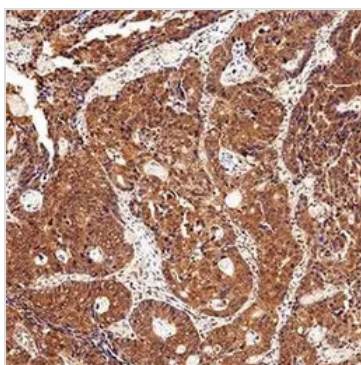
GTX04245 FACS Image

FACS analysis of CHO (A) and HEK293 (B) cells using GTX04245 CIP2A antibody [2G10].

Antibody amount : 1 µg/106 cells

Blue : Primary antibody

Orange : Isotype control



GTX04245 IHC-P Image

IHC-P analysis human colon cancer tissue using GTX04245 CIP2A [2G10] on a Bond Rx autostainer (Leica Biosystems).

Antigen retrieval : Heat induced antigen retrieval using 10mM sodium citrate buffer (pH 6.0), 20 minutes

Dilution : 1:200



For full product information, images and publications, please visit our [website](#).