



# SZABO SCANDIC

Part of Europa Biosite

## Produktinformation



Forschungsprodukte & Biochemikalien



Zellkultur & Verbrauchsmaterial



Diagnostik & molekulare Diagnostik



Laborgeräte & Service

Weitere Information auf den folgenden Seiten!  
See the following pages for more information!



### Lieferung & Zahlungsart

siehe unsere [Liefer- und Versandbedingungen](#)

### Zuschläge

- Mindermengenzuschlag
- Trockeneiszuschlag
- Gefahrgutzuschlag
- Expressversand

### SZABO-SCANDIC HandelsgmbH

Quellenstraße 110, A-1100 Wien

T. +43(0)1 489 3961-0

F. +43(0)1 489 3961-7

[mail@szabo-scandic.com](mailto:mail@szabo-scandic.com)

[www.szabo-scandic.com](http://www.szabo-scandic.com)

[linkedin.com/company/szaboscandic](https://www.linkedin.com/company/szaboscandic) 

## 5-HT2A receptor antibody

Cat. No. GTX04247

Host	Rabbit
Clonality	Polyclonal
Isotype	IgG
Application	WB, IHC-Fr, FACS
Reactivity	Human, Mouse, Rat

Package  
50 µl

## APPLICATION

## Application Note

\*Optimal dilutions/concentrations should be determined by the researcher.

Suggested dilution	Recommended dilution
WB	Assay dependent
IHC-Fr	Assay dependent
FACS	Assay dependent

Not tested in other applications.

Calculated MW 53 kDa. ([Note](#))

## PROPERTIES

Form	Liquid
Buffer	PBS pH 7.4, 1% BSA
Preservative	0.05% sodium azide
Storage	Store as concentrated solution. Centrifuge briefly prior to opening vial. For short-term storage (1-2 weeks), store at 4°C. For long-term storage, aliquot and store at -20°C or below. Avoid multiple freeze-thaw cycles.
Concentration	0.9 mg/ml (Please refer to the vial label for the specific concentration.)
Immunogen	Peptide (C)SEASNWTIDAENR, corresponding to amino acid residues 40-52 (Extracellular, N-terminus) of rat 5-Hydroxytryptamine receptor 2A (Accession P14842).
Purification	Purified by antigen-affinity chromatography
Conjugation	Unconjugated

## Note

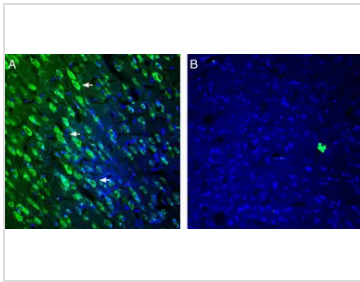
For laboratory research use only. Not for any clinical, therapeutic, or diagnostic use in humans or animals. Not for animal or human consumption.

Purchasers shall not, and agree not to enable third parties to, analyze, copy, reverse engineer or otherwise attempt to determine the structure or sequence of the product.



For full product information, images and publications, please visit our [website](#).

## DATA IMAGES

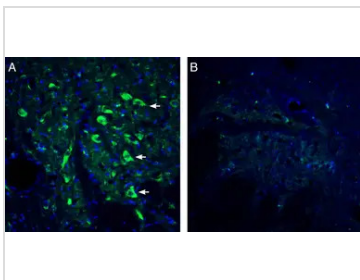
**GTX04247 IHC-Fr Image**

IHC-Fr analysis of rat brain tissue (dorsal raphe nucleus) using GTX04247 5-HT<sub>2A</sub> receptor antibody prior incubated with (Panel B) or without (Panel A) immunogen peptide. 5HT<sub>2A</sub> Receptor immunoreactivity appears in outlines of cortical neurons (arrows).

Green : Primary antibody

Blue : DAPI

Dilution : 1:1200

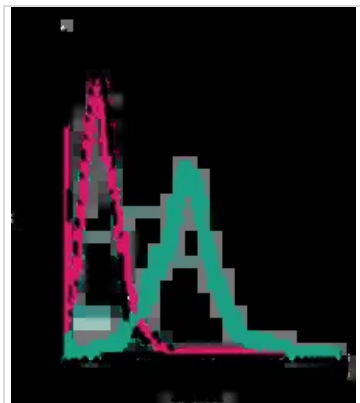
**GTX04247 IHC-Fr Image**

IHC-Fr analysis of rat brain tissue (cingulate cortex) using GTX04247 5-HT<sub>2A</sub> receptor antibody prior incubated with (Panel B) or without (Panel A) immunogen peptide. 5HT<sub>2A</sub> Receptor immunoreactivity appears in outlines of neurons (arrows).

Green : Primary antibody

Blue : DAPI

Dilution : 1:1200

**GTX04247 FACS Image**

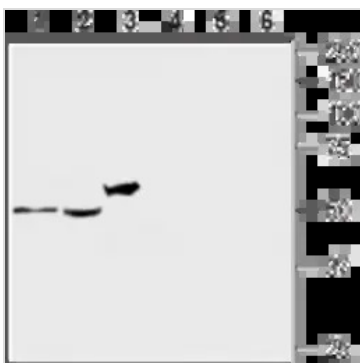
FACS analysis of MEG-01 cells using GTX04247 5-HT<sub>2A</sub> receptor antibody.

Antibody amount : 5 µg

Green : Primary antibody

Black : Unlabelled sample

Pink : Secondary antibody only

**GTX04247 WB Image**

WB analysis of various lysates using GTX04247 5-HT<sub>2A</sub> receptor antibody prior incubated with (Lane 4-6) or without (Lane 1-3) immunogen peptide.

Lane 1 and 4 : Rat Dorsal Root Ganglion

Lane 2 and 5 : Mouse brain

Lane 3 and 6 : SH-SY5Y

Dilution : 1:200



For full product information, images and publications, please visit our [website](#).