



SZABO SCANDIC

Part of Europa Biosite

Produktinformation



Forschungsprodukte & Biochemikalien



Zellkultur & Verbrauchsmaterial



Diagnostik & molekulare Diagnostik



Laborgeräte & Service

Weitere Information auf den folgenden Seiten!
See the following pages for more information!



Lieferung & Zahlungsart

siehe unsere [Liefer- und Versandbedingungen](#)

Zuschläge

- Mindermengenzuschlag
- Trockeneiszuschlag
- Gefahrgutzuschlag
- Expressversand

SZABO-SCANDIC HandelsgmbH

Quellenstraße 110, A-1100 Wien

T. +43(0)1 489 3961-0

F. +43(0)1 489 3961-7

mail@szabo-scandic.com

www.szabo-scandic.com

[linkedin.com/company/szaboscandic](https://www.linkedin.com/company/szaboscandic) 

CD155 antibody [5I13D1]

Cat. No. GTX04249

Host	Mouse
Clonality	Monoclonal
Isotype	IgG2a
Application	WB, IHC-P, FACS
Reactivity	Human, Mouse

Package
100 µg

APPLICATION

Application Note

*Optimal dilutions/concentrations should be determined by the researcher.

Suggested dilution	Recommended dilution
WB	0.25-0.5 µg/mL
IHC-P	2-5 µg/mL
FACS	1-3 µg/1*10 ⁶ cells

Not tested in other applications.

Calculated MW 45 kDa. ([Note](#))

PROPERTIES

Form	Liquid
Buffer	4 mg Trehalose, 0.9 mg NaCl, 0.2 mg Na ₂ HPO ₄
Preservative	No preservatives
Storage	Store as concentrated solution. Centrifuge briefly prior to opening vial. For short-term storage (1-2 weeks), store at 4°C. For long-term storage, aliquot and store at -20°C or below. Avoid multiple freeze-thaw cycles.
Concentration	0.5 mg/ml (Please refer to the vial label for the specific concentration.)
Immunogen	E.coli-derived human Poliovirus Receptor/PVR recombinant protein (Position: D28-E331).
Purification	Purified by antigen-affinity chromatography
Conjugation	Unconjugated

Note

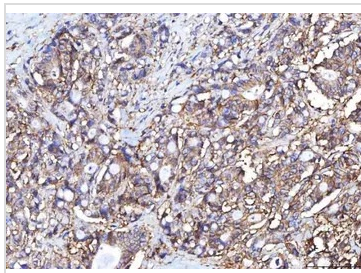
For laboratory research use only. Not for any clinical, therapeutic, or diagnostic use in humans or animals. Not for animal or human consumption.

Purchasers shall not, and agree not to enable third parties to, analyze, copy, reverse engineer or otherwise attempt to determine the structure or sequence of the product.

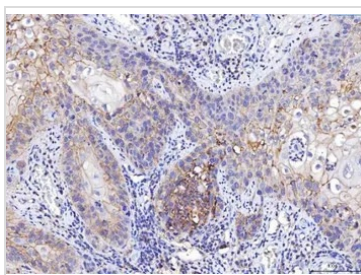


For full product information, images and publications, please visit our [website](#).

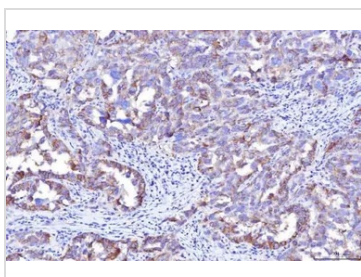
DATA IMAGES

**GTX04249 IHC-P Image**

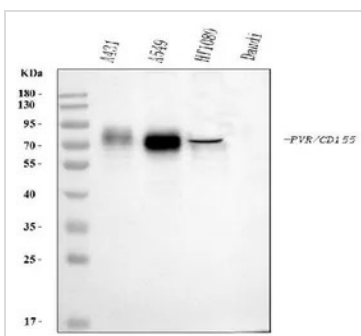
IHC-P analysis of human colorectal adenocarcinoma tissue using GTX04249 CD155 antibody [5I13D1].
Antigen retrieval : Heat mediated antigen retrieval was performed in EDTA buffer (pH 8.0, epitope retrieval solution)
Dilution : 2 µg/mL

**GTX04249 IHC-P Image**

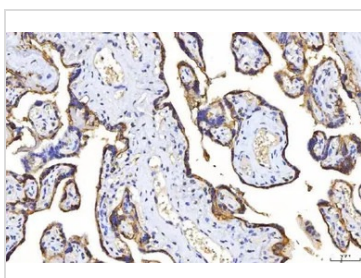
IHC-P analysis of human laryngeal squamous cell carcinoma tissue using GTX04249 CD155 antibody [5I13D1].
Antigen retrieval : Heat mediated antigen retrieval was performed in EDTA buffer (pH 8.0, epitope retrieval solution)
Dilution : 2 µg/mL

**GTX04249 IHC-P Image**

IHC-P analysis of human ovarian cancer tissue using GTX04249 CD155 antibody [5I13D1].
Antigen retrieval : Heat mediated antigen retrieval was performed in EDTA buffer (pH 8.0, epitope retrieval solution)
Dilution : 2 µg/mL

**GTX04249 WB Image**

WB analysis of various cell lysates using GTX04249 CD155 antibody [5I13D1].
Loading : 30 µg
Dilution : 0.5 µg/mL

**GTX04249 IHC-P Image**

IHC-P analysis of human placenta tissue using GTX04249 CD155 antibody [5I13D1].
Antigen retrieval : Heat mediated antigen retrieval was performed in EDTA buffer (pH 8.0, epitope retrieval solution)
Dilution : 2 µg/mL



For full product information, images and publications, please visit our [website](#).