



SZABO SCANDIC

Part of Europa Biosite

Produktinformation



Forschungsprodukte & Biochemikalien



Zellkultur & Verbrauchsmaterial



Diagnostik & molekulare Diagnostik



Laborgeräte & Service

Weitere Information auf den folgenden Seiten!
See the following pages for more information!



Lieferung & Zahlungsart

siehe unsere [Liefer- und Versandbedingungen](#)

Zuschläge

- Mindermengenzuschlag
- Trockeneiszuschlag
- Gefahrgutzuschlag
- Expressversand

SZABO-SCANDIC HandelsgmbH

Quellenstraße 110, A-1100 Wien

T. +43(0)1 489 3961-0

F. +43(0)1 489 3961-7

mail@szabo-scandic.com

www.szabo-scandic.com

[linkedin.com/company/szaboscandic](https://www.linkedin.com/company/szaboscandic) 

NCOA4 antibody

Cat. No. GTX04250

| | |
|--------------------|--------------------------|
| Host | Rabbit |
| Clonality | Polyclonal |
| Isotype | IgG |
| Application | WB, ICC/IF, IHC-P, ELISA |
| Reactivity | Human, Mouse, Rat |

Package
100 µg

APPLICATION

Application Note

*Optimal dilutions/concentrations should be determined by the researcher.

| Suggested dilution | Recommended dilution |
|--------------------|----------------------|
| WB | 0.5-1 µg/mL |
| ICC/IF | 20 µg/mL |
| IHC-P | 1 µg/mL |
| ELISA | Assay dependent |

Not tested in other applications.

Calculated MW 70 kDa. ([Note](#))

PROPERTIES

| | |
|----------------------|--|
| Form | Liquid |
| Buffer | PBS |
| Preservative | 0.02% sodium azide |
| Storage | Store as concentrated solution. Centrifuge briefly prior to opening vial. For short-term storage (1-2 weeks), store at 4°C. For long-term storage, aliquot and store at -20°C or below. Avoid multiple freeze-thaw cycles. |
| Concentration | 1 mg/ml (Please refer to the vial label for the specific concentration.) |
| Immunogen | Peptide corresponding to 13 amino acids near the center of human NCOA4. The immunogen is located within 420-470 amino acids of NCOA4. |
| Purification | Purified by antigen-affinity chromatography |
| Conjugation | Unconjugated |



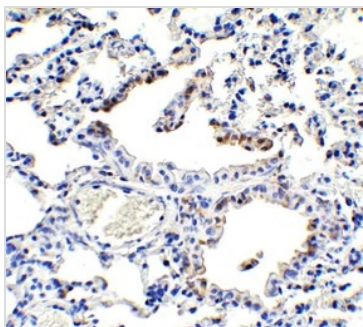
For full product information, images and publications, please visit our [website](#).

For laboratory research use only. Not for any clinical, therapeutic, or diagnostic use in humans or animals. Not for animal or human consumption.

Note

Purchasers shall not, and agree not to enable third parties to, analyze, copy, reverse engineer or otherwise attempt to determine the structure or sequence of the product.

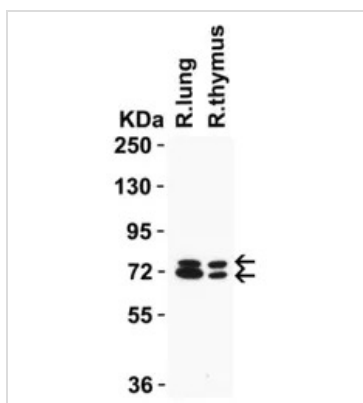
DATA IMAGES

**GTX04250 IHC-P Image**

IHC-P analysis of mouse lung tissue using GTX04250 NCOA4 antibody.

Antigen retrieval : Heat mediated citrate buffer (pH 6)

Dilution : 1 µg/mL

**GTX04250 WB Image**

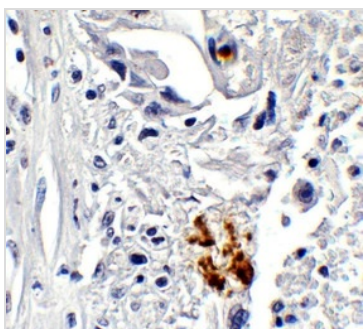
WB analysis of various tissue lysates using GTX04250 NCOA4 antibody.

Loading : 15 µg

Dilution : 1 µg/mL

Lane 1: Rat lung

Lane 2 : Rat thymus

**GTX04250 IHC-P Image**

IHC-P analysis of human lung tissue using GTX04250 NCOA4 antibody.

Antigen retrieval : Heat mediated citrate buffer (pH 6)

Dilution : 1 µg/mL



For full product information, images and publications, please visit our [website](#).