



SZABO SCANDIC

Part of Europa Biosite

Produktinformation



Forschungsprodukte & Biochemikalien



Zellkultur & Verbrauchsmaterial



Diagnostik & molekulare Diagnostik



Laborgeräte & Service

Weitere Information auf den folgenden Seiten!
See the following pages for more information!



Lieferung & Zahlungsart

siehe unsere [Liefer- und Versandbedingungen](#)

Zuschläge

- Mindermengenzuschlag
- Trockeneiszuschlag
- Gefahrgutzuschlag
- Expressversand

SZABO-SCANDIC HandelsgmbH

Quellenstraße 110, A-1100 Wien

T. +43(0)1 489 3961-0

F. +43(0)1 489 3961-7

mail@szabo-scandic.com

www.szabo-scandic.com

[linkedin.com/company/szaboscandic](https://www.linkedin.com/company/szaboscandic) 

SLC31A1 / CTR1 antibody

Cat. No. GTX04251

Host	Rabbit
Clonality	Polyclonal
Isotype	IgG
Application	WB, IHC-P, IP, ELISA
Reactivity	Human, Mouse, Rat, Monkey

Package
100 µg

APPLICATION

Application Note

*Optimal dilutions/concentrations should be determined by the researcher.

Suggested dilution	Recommended dilution
WB	1:500
IHC-P	1:50-1:100
IP	1:200
ELISA	1:10000

Not tested in other applications.

Calculated MW 21 kDa. ([Note](#))

PROPERTIES

Form	Liquid
Buffer	Tris/Glycine pH 7.4-7.9, 30% glycerol, 0.5% BSA
Preservative	0.02% sodium azide
Storage	Store as concentrated solution. Centrifuge briefly prior to opening vial. For short-term storage (1-2 weeks), store at 4°C. For long-term storage, aliquot and store at -20°C or below. Avoid multiple freeze-thaw cycles.
Concentration	0.5 mg/ml (Please refer to the vial label for the specific concentration.)
Immunogen	N-epitope synthetic peptide corresponding to amino acids 1-50 of Human SLC31A1 / CTR1 protein.
Purification	Purified by affinity chromatography
Conjugation	Unconjugated

Note

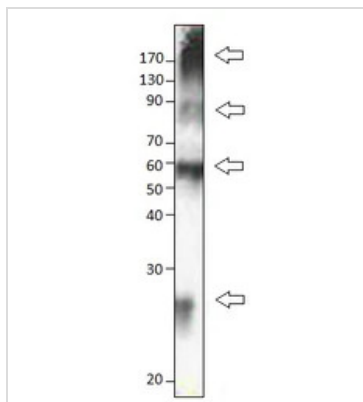
For laboratory research use only. Not for any clinical, therapeutic, or diagnostic use in humans or animals. Not for animal or human consumption.

Purchasers shall not, and agree not to enable third parties to, analyze, copy, reverse engineer or otherwise attempt to determine the structure or sequence of the product.



For full product information, images and publications, please visit our [website](#).

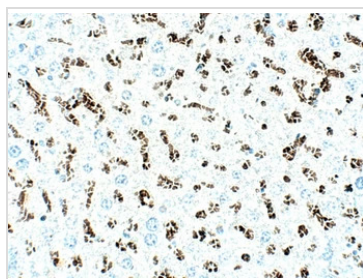
DATA IMAGES



GTX04251 WB Image

WB analysis of CTR1 protein lysates using GTX04251 SLC31A1 / CTR1 antibody. Arrows label monomeric, dimeric, and multimeric human CTR1.

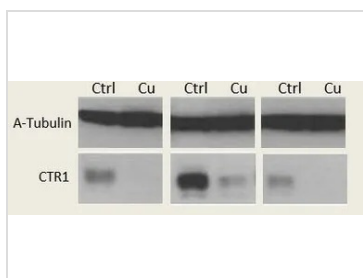
Dilution : 1:1000



GTX04251 IHC-P Image

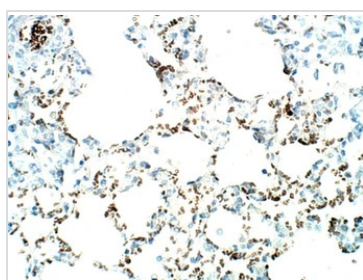
IHC-P analysis of mouse liver tissue using GTX04251 SLC31A1 / CTR1 antibody.

Dilution : 1:50



GTX04251 WB Image

WB analysis of copper treated human ovarian cell lysates using GTX04251 SLC31A1 / CTR1 antibody.



GTX04251 IHC-P Image

IHC-P analysis of mouse lung tissue using GTX04251 SLC31A1 / CTR1 antibody.

Dilution : 1:50



For full product information, images and publications, please visit our [website](#).