



# SZABO SCANDIC

Part of Europa Biosite

## Produktinformation



Forschungsprodukte & Biochemikalien



Zellkultur & Verbrauchsmaterial



Diagnostik & molekulare Diagnostik



Laborgeräte & Service

Weitere Information auf den folgenden Seiten!  
See the following pages for more information!



### Lieferung & Zahlungsart

siehe unsere [Liefer- und Versandbedingungen](#)

### Zuschläge

- Mindermengenzuschlag
- Trockeneiszuschlag
- Gefahrgutzuschlag
- Expressversand

### SZABO-SCANDIC HandelsgmbH

Quellenstraße 110, A-1100 Wien

T. +43(0)1 489 3961-0

F. +43(0)1 489 3961-7

[mail@szabo-scandic.com](mailto:mail@szabo-scandic.com)

[www.szabo-scandic.com](http://www.szabo-scandic.com)

[linkedin.com/company/szaboscandic](https://www.linkedin.com/company/szaboscandic) 

## TMEM38B antibody

Cat. No. GTX04255

<b>Host</b>	Rabbit
<b>Clonality</b>	Polyclonal
<b>Isotype</b>	IgG
<b>Application</b>	WB, ICC/IF, IHC-P
<b>Reactivity</b>	Human, Mouse, Rat

Package  
50 µl

## APPLICATION

## Application Note

\*Optimal dilutions/concentrations should be determined by the researcher.

Suggested dilution	Recommended dilution
WB	Assay dependent
ICC/IF	Assay dependent
IHC-P	Assay dependent

Not tested in other applications.

**Calculated MW** 32 kDa. ([Note](#))

## PROPERTIES

<b>Form</b>	Liquid
<b>Buffer</b>	PBS pH 7.4, 1% BSA
<b>Preservative</b>	0.05% Sodium Azide
<b>Storage</b>	Store as concentrated solution. Centrifuge briefly prior to opening vial. For short-term storage (1-2 weeks), store at 4°C. For long-term storage, aliquot and store at -20°C or below. Avoid multiple freeze-thaw cycles.
<b>Concentration</b>	0.8 mg/ml (Please refer to the vial label for the specific concentration.)
<b>Immunogen</b>	Peptide (C)GMKEVTRTWKIVG, corresponding to amino acid residues 116-126 (Intracellular, cytoplasmic loop) of rat TRIC-B (Accession Q68FV1).
<b>Purification</b>	Purified by antigen-affinity chromatography
<b>Conjugation</b>	Unconjugated

## Note

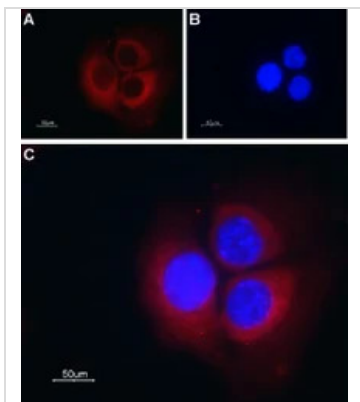
For laboratory research use only. Not for any clinical, therapeutic, or diagnostic use in humans or animals. Not for animal or human consumption.

Purchasers shall not, and agree not to enable third parties to, analyze, copy, reverse engineer or otherwise attempt to determine the structure or sequence of the product.



For full product information, images and publications, please visit our [website](#).

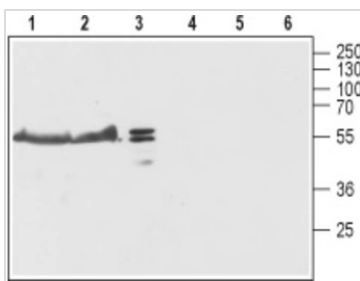
## DATA IMAGES

**GTX04255 ICC/IF Image**

ICC/IF analysis of PFA-fixed C2C12 cells using GTX04255 TMEM38B antibody.

Dilution : 1:200

Blue : DAPI

**GTX04255 WB Image**

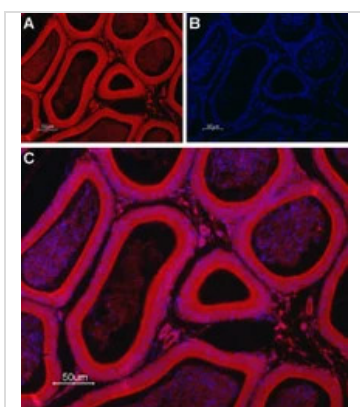
WB analysis of various lysates using GTX04255 TMEM38B antibody prior incubated with (Lane 4-6) or without (Lane 1-3) blocking peptide.

Lane 1 and 4 : Rat brain

Lane 2 and 5 : Mouse brain

Lane 3 and 6 : SH-SY5Y

Dilution : 1:200

**GTX04255 IHC-P Image**

IHC-P analysis of rat testis tissue using GTX04255 TMEM38B antibody. TMEM38B labeling appears in the columnar principal epithelium of the epididymis and in the endothelium of the surrounding blood vessels.

Blue : DAPI



For full product information, images and publications, please visit our [website](#).