



SZABO SCANDIC

Part of Europa Biosite

Produktinformation



Forschungsprodukte & Biochemikalien



Zellkultur & Verbrauchsmaterial



Diagnostik & molekulare Diagnostik



Laborgeräte & Service

Weitere Information auf den folgenden Seiten!
See the following pages for more information!



Lieferung & Zahlungsart

siehe unsere [Liefer- und Versandbedingungen](#)

Zuschläge

- Mindermengenzuschlag
- Trockeneiszuschlag
- Gefahrgutzuschlag
- Expressversand

SZABO-SCANDIC HandelsgmbH

Quellenstraße 110, A-1100 Wien

T. +43(0)1 489 3961-0

F. +43(0)1 489 3961-7

mail@szabo-scandic.com

www.szabo-scandic.com

[linkedin.com/company/szaboscandic](https://www.linkedin.com/company/szaboscandic) 

Cyclophilin B antibody [11C11]

Cat. No. GTX04262

Host	Mouse
Clonality	Monoclonal
Isotype	IgG1
Application	WB, ICC/IF, IHC-P, FACS
Reactivity	Human, Mouse, Rat

Package
100 µg

APPLICATION

Application Note

*Optimal dilutions/concentrations should be determined by the researcher.

Suggested dilution	Recommended dilution
WB	0.1-0.5 µg/mL
ICC/IF	2 µg/mL
IHC-P	0.5-1 µg/mL
FACS	1-3 µg/106 cells

Not tested in other applications.

Calculated MW 24 kDa. ([Note](#))

PROPERTIES

Form	Liquid
Buffer	4 mg Trehalose, 0.9 mg NaCl, 0.2 mg Na ₂ HPO ₄
Preservative	0.05 mg sodium azide
Storage	Store as concentrated solution. Centrifuge briefly prior to opening vial. For short-term storage (1-2 weeks), store at 4°C. For long-term storage, aliquot and store at -20°C or below. Avoid multiple freeze-thaw cycles.
Concentration	0.5 mg/ml (Please refer to the vial label for the specific concentration.)
Immunogen	E. coli-derived human Cyclophilin B recombinant protein (Position: K158-E216).
Purification	Purified by antigen-affinity chromatography
Conjugation	Unconjugated

Note

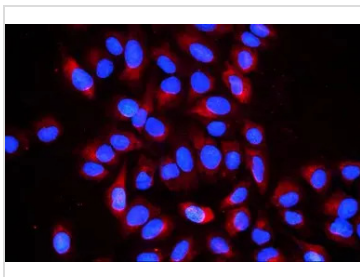
For laboratory research use only. Not for any clinical, therapeutic, or diagnostic use in humans or animals. Not for animal or human consumption.

Purchasers shall not, and agree not to enable third parties to, analyze, copy, reverse engineer or otherwise attempt to determine the structure or sequence of the product.

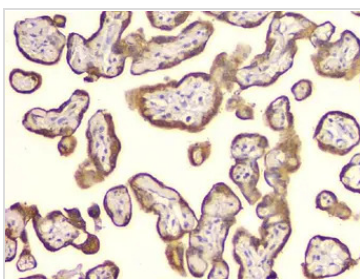


For full product information, images and publications, please visit our [website](#).

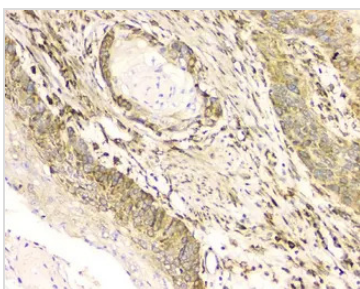
DATA IMAGES

**GTX04262 ICC/IF Image**

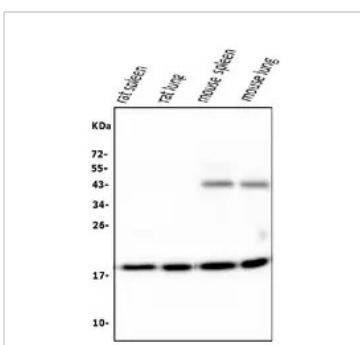
ICC/IF analysis of U2OS cells using GTX04262 Cyclophilin B antibody [11C11].
Antigen retrieval : Heat mediated EDTA buffer (pH 8.0, epitope retrieval solution)
Dilution : 2 µg/mL

**GTX04262 IHC-P Image**

IHC-P analysis of human placenta tissue using GTX04262 Cyclophilin B antibody [11C11].
Antigen retrieval : Heat mediated EDTA buffer (pH 8.0, epitope retrieval solution)
Dilution : 1 µg/mL

**GTX04262 IHC-P Image**

IHC-P analysis of human oesophagus squama cancer tissue using GTX04262 Cyclophilin B antibody [11C11].
Antigen retrieval : Heat mediated EDTA buffer (pH 8.0, epitope retrieval solution)
Dilution : 1 µg/mL

**GTX04262 WB Image**

WB analysis of various tissue lysates using GTX04262 Cyclophilin B antibody [11C11].
Loading : 50 µg
Dilution : 0.5 µg/mL



For full product information, images and publications, please visit our [website](#).