



SZABO SCANDIC

Part of Europa Biosite

Produktinformation



Forschungsprodukte & Biochemikalien



Zellkultur & Verbrauchsmaterial



Diagnostik & molekulare Diagnostik



Laborgeräte & Service

Weitere Information auf den folgenden Seiten!
See the following pages for more information!



Lieferung & Zahlungsart

siehe unsere [Liefer- und Versandbedingungen](#)

Zuschläge

- Mindermengenzuschlag
- Trockeneiszuschlag
- Gefahrgutzuschlag
- Expressversand

SZABO-SCANDIC HandelsgmbH

Quellenstraße 110, A-1100 Wien

T. +43(0)1 489 3961-0

F. +43(0)1 489 3961-7

mail@szabo-scandic.com

www.szabo-scandic.com

[linkedin.com/company/szaboscandic](https://www.linkedin.com/company/szaboscandic) 

Hemoglobin beta S antibody [23E5.H6.G6.C1.H7.F7.G9.F6]

Cat. No. GTX04268

Host	Mouse
Clonality	Monoclonal
Isotype	IgG3
Application	WB, FACS, ELISA, Lateral Flow
Reactivity	Human

Package
100 µg

APPLICATION

Application Note

*Optimal dilutions/concentrations should be determined by the researcher.

Suggested dilution	Recommended dilution
WB	1 µg/mL
FACS	Assay dependent
ELISA	1:20,000
Lateral Flow	Assay dependent

Not tested in other applications.

Calculated MW 16 kDa. ([Note](#))

Product Note This antibody detect the E6V mutant in the hemoglobin beta subunit and does not react with the HbA, HbF, HbC, or HbA-2 isoform.

PROPERTIES

Form	Liquid
Buffer	0.02 M Potassium phosphate, 0.15 M Sodium chloride pH 7.2
Preservative	0.01% sodium azide
Storage	Store as concentrated solution. Centrifuge briefly prior to opening vial. For short-term storage (1-2 weeks), store at 4°C. For long-term storage, aliquot and store at -20°C or below. Avoid multiple freeze-thaw cycles.
Concentration	1 mg/ml (Please refer to the vial label for the specific concentration.)
Immunogen	Synthetic peptide corresponding to amino acid residues near the N-terminus of Hb β-subunit conjugated to KLH.
Purification	Protein A purified From tissue culture supernatant
Conjugation	Unconjugated



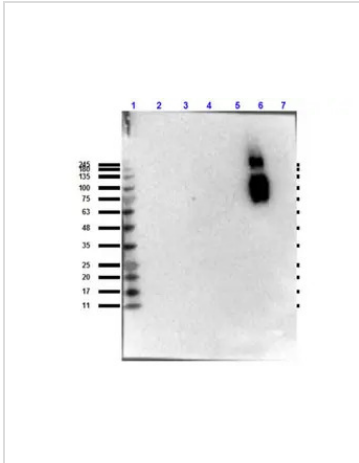
For full product information, images and publications, please visit our [website](#).

Date 2024 / 01 / 08 Page 1 of 2

For laboratory research use only. Not for any clinical, therapeutic, or diagnostic use in humans or animals. Not for animal or human consumption.

Note
 Purchasers shall not, and agree not to enable third parties to, analyze, copy, reverse engineer or otherwise attempt to determine the structure or sequence of the product.

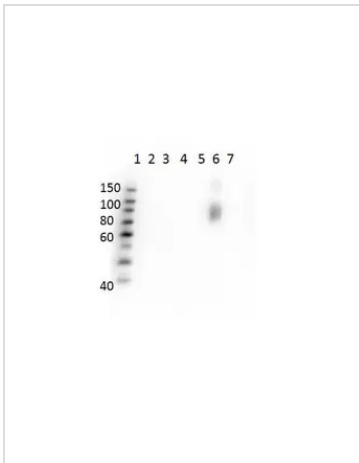
DATA IMAGES



GTX04268 WB Image

WB analysis of various sample lysates using GTX04268 Hemoglobin beta S antibody [23E5.H6.G6.C1.H7.F7.G9.F6].

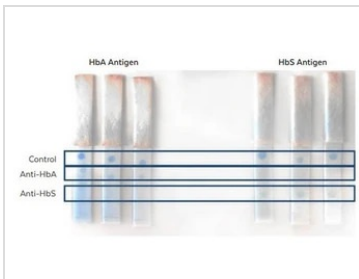
- Lane 1 : Prestained molecular weight marker
 - Lane 2 : HbA
 - Lane 3 : HbA2
 - Lane 4 : HbC
 - Lane 5 : HbF
 - Lane 6 : HbS
 - Lane 7 : BSA
- Dilution : 1:1000
 Loading : 10µg



GTX04268 WB Image

WB analysis of various sample lysates using GTX04268 Hemoglobin beta S antibody [23E5.H6.G6.C1.H7.F7.G9.F6].

- Lane 1 : Prestained molecular weight marker
 - Lane 2 : HbA peptide conjugated to BSA
 - Lane 3 : HbA-2 peptide conjugated to BSA
 - Lane 4 : HbC peptide conjugated to BSA
 - Lane 5 : HbF peptide conjugated to BSA
 - Lane 6 : HbS peptide conjugated to BSA
 - Lane 7 : BSA alone
- Loading : 50ng per lane
 Dilution : 1µg/mL



GTX04268 Lateral Flow Image

Lateral flow analysis of recombinant HbA (left group) or HbS (right group) proteins using GTX04267 Hemoglobin beta antibody [14G2.G11.F11] and GTX04268 Hemoglobin beta S antibody [23E5.H6.G6.C1.H7.F7.G9.F6].

Antibody amount : GTX04267 Hemoglobin beta antibody 0.5µL at 250ug/mL and GTX04268 Hemoglobin beta S antibody 0.5µL at 1mg/mL



For full product information, images and publications, please visit our [website](#).