



# SZABO SCANDIC

Part of Europa Biosite

## Produktinformation



Forschungsprodukte & Biochemikalien



Zellkultur & Verbrauchsmaterial



Diagnostik & molekulare Diagnostik



Laborgeräte & Service

Weitere Information auf den folgenden Seiten!  
See the following pages for more information!



### Lieferung & Zahlungsart

siehe unsere [Liefer- und Versandbedingungen](#)

### Zuschläge

- Mindermengenzuschlag
- Trockeneiszuschlag
- Gefahrgutzuschlag
- Expressversand

### SZABO-SCANDIC HandelsgmbH

Quellenstraße 110, A-1100 Wien

T. +43(0)1 489 3961-0

F. +43(0)1 489 3961-7

[mail@szabo-scandic.com](mailto:mail@szabo-scandic.com)

[www.szabo-scandic.com](http://www.szabo-scandic.com)

[linkedin.com/company/szaboscandic](https://www.linkedin.com/company/szaboscandic) 

## Hemoglobin beta C antibody [15C2.C11.F2.G11]

Cat. No. GTX04269

<b>Host</b>	Mouse
<b>Clonality</b>	Monoclonal
<b>Isotype</b>	IgG1
<b>Application</b>	WB, ELISA, Lateral Flow
<b>Reactivity</b>	Human

Package  
100 µg

## APPLICATION

## Application Note

\*Optimal dilutions/concentrations should be determined by the researcher.

Suggested dilution	Recommended dilution
WB	1 µg/mL
ELISA	1:20,000
Lateral Flow	Assay dependent

Not tested in other applications.

**Calculated MW** 16 kDa. ([Note](#))

**Product Note** This antibody detect the E6K mutant in the hemoglobin beta subunit and does not react with the HbA, HbS, HbF, or HbA-2 isoforms.

## PROPERTIES

<b>Form</b>	Liquid
<b>Buffer</b>	0.02 M Potassium phosphate, 0.15 M Sodium chloride pH 7.2
<b>Preservative</b>	0.01% sodium azide
<b>Storage</b>	Store as concentrated solution. Centrifuge briefly prior to opening vial. For short-term storage (1-2 weeks), store at 4°C. For long-term storage, aliquot and store at -20°C or below. Avoid multiple freeze-thaw cycles.
<b>Concentration</b>	1 mg/ml (Please refer to the vial label for the specific concentration.)
<b>Immunogen</b>	Synthetic peptide corresponding to amino acid residues near the N-terminus of Hb β-subunit conjugated to KLH.
<b>Purification</b>	Protein A purified From tissue culture supernatant
<b>Conjugation</b>	Unconjugated



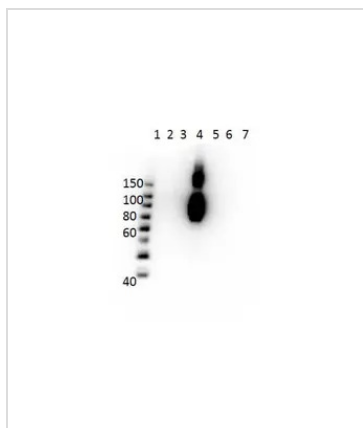
For full product information, images and publications, please visit our [website](#).

For laboratory research use only. Not for any clinical, therapeutic, or diagnostic use in humans or animals. Not for animal or human consumption.

## Note

Purchasers shall not, and agree not to enable third parties to, analyze, copy, reverse engineer or otherwise attempt to determine the structure or sequence of the product.

## DATA IMAGES



### GTX04269 WB Image

WB analysis of various sample lysates using GTX04269 Hemoglobin beta C antibody [15C2.C11.F2.G11].

Lane 1 : Prestained molecular weight marker

Lane 2 : HbA peptide conjugated to BSA

Lane 3 : HbA-2 peptide conjugated to BSA

Lane 4 : HbC peptide conjugated to BSA

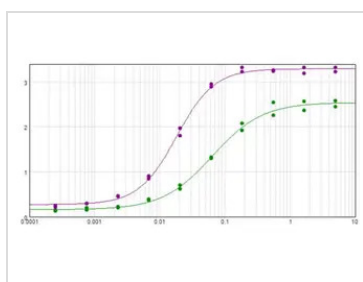
Lane 5 : HbF peptide conjugated to BSA

Lane 6 : HbS peptide conjugated to BSA

Lane 7 : BSA alone

Loading : 50ng per lane

Dilution : 1µg/mL



### GTX04269 ELISA Image

ELISA analysis of 0.1µg BSA-conjugated HbC peptide using GTX04269 Hemoglobin beta C antibody [15C2.C11.F2.G11]. The starting dilution of antibody was 5µg/ml and the X-axis represents the Log<sub>10</sub> of a 3-fold dilution. This titration is a 4-parameter curve fit where the IC<sub>50</sub> is defined as the titer of the antibody.

Purple : GTX04269

Green : Hemoglobin polyclonal antibody



For full product information, images and publications, please visit our [website](#).