



# SZABO SCANDIC

Part of Europa Biosite

## Produktinformation



Forschungsprodukte & Biochemikalien



Zellkultur & Verbrauchsmaterial



Diagnostik & molekulare Diagnostik



Laborgeräte & Service

Weitere Information auf den folgenden Seiten!  
See the following pages for more information!



### Lieferung & Zahlungsart

siehe unsere [Liefer- und Versandbedingungen](#)

### Zuschläge

- Mindermengenzuschlag
- Trockeneiszuschlag
- Gefahrgutzuschlag
- Expressversand

### SZABO-SCANDIC HandelsgmbH

Quellenstraße 110, A-1100 Wien

T. +43(0)1 489 3961-0

F. +43(0)1 489 3961-7

[mail@szabo-scandic.com](mailto:mail@szabo-scandic.com)

[www.szabo-scandic.com](http://www.szabo-scandic.com)

[linkedin.com/company/szaboscandic](https://www.linkedin.com/company/szaboscandic) 

## RAB8A antibody [ARC2968]

Cat. No. GTX04272

|             |                   |
|-------------|-------------------|
| Host        | Rabbit            |
| Clonality   | Monoclonal        |
| Isotype     | IgG               |
| Application | WB, ICC/IF, IP    |
| Reactivity  | Human, Mouse, Rat |

Package  
100 µl

## APPLICATION

## Application Note

\*Optimal dilutions/concentrations should be determined by the researcher.

| Suggested dilution | Recommended dilution |
|--------------------|----------------------|
| WB                 | 1:500-1:2000         |
| ICC/IF             | 1:50-1:200           |
| IP                 | 1:50-1:200           |

Not tested in other applications.

Calculated MW 24 kDa. ([Note](#))

## PROPERTIES

|               |  |
|---------------|--|
| Form          | Liquid   |
| Buffer        | PBS pH 7.3, 0.05% BSA, 50% glycerol,   |
| Preservative  | 0.02% sodium azide   |
| Storage       | Store as concentrated solution. Centrifuge briefly prior to opening vial. For short-term storage (1-2 weeks), store at 4°C. For long-term storage, aliquot and store at -20°C or below. Avoid multiple freeze-thaw cycles. |
| Concentration | Batch dependent (Please refer to the vial label for the specific concentration.)   |
| Immunogen     | A synthetic peptide corresponding to a sequence within amino acids 100-207 of human RAB8A (P61006).  |
| Purification  | Purified by affinity chromatography  |
| Conjugation   | Unconjugated   |

## Note

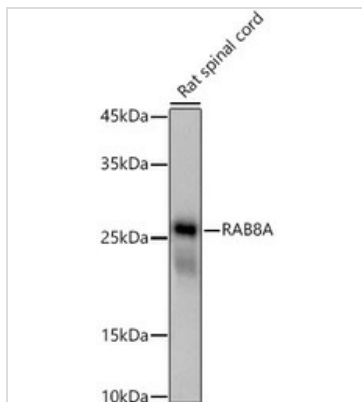
For laboratory research use only. Not for any clinical, therapeutic, or diagnostic use in humans or animals. Not for animal or human consumption.

Purchasers shall not, and agree not to enable third parties to, analyze, copy, reverse engineer or otherwise attempt to determine the structure or sequence of the product.



For full product information, images and publications, please visit our [website](#).

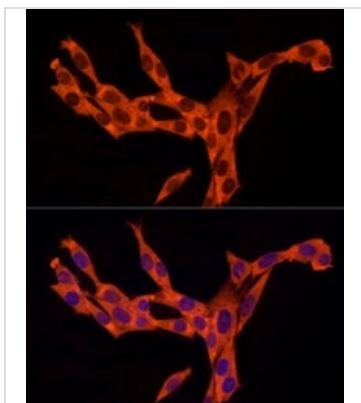
## DATA IMAGES

**GTX04272 WB Image**

WB analysis of rat spinal cord tissue lysates using GTX04272 RAB8A antibody [ARC2968].

Loading : 25 µg

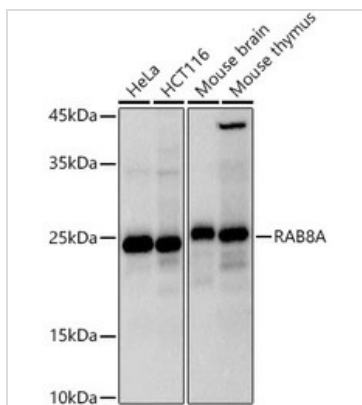
Dilution : 1:1000

**GTX04272 ICC/IF Image**

ICC/IF analysis of NIH-3T3 cells using GTX04272 RAB8A antibody [ARC2968].

Dilution : 1:100

Blue : DAPI

**GTX04272 WB Image**

WB analysis of various sample lysates using GTX04272 RAB8A antibody [ARC2968].

Loading : 25 µg

Dilution : 1:1000



For full product information, images and publications, please visit our [website](#).