



# SZABO SCANDIC

Part of Europa Biosite

## Produktinformation



Forschungsprodukte & Biochemikalien



Zellkultur & Verbrauchsmaterial



Diagnostik & molekulare Diagnostik



Laborgeräte & Service

Weitere Information auf den folgenden Seiten!  
See the following pages for more information!



### Lieferung & Zahlungsart

siehe unsere [Liefer- und Versandbedingungen](#)

### Zuschläge

- Mindermengenzuschlag
- Trockeneiszuschlag
- Gefahrgutzuschlag
- Expressversand

### SZABO-SCANDIC HandelsgmbH

Quellenstraße 110, A-1100 Wien

T. +43(0)1 489 3961-0

F. +43(0)1 489 3961-7

[mail@szabo-scandic.com](mailto:mail@szabo-scandic.com)

[www.szabo-scandic.com](http://www.szabo-scandic.com)

[linkedin.com/company/szaboscandic](https://www.linkedin.com/company/szaboscandic) 

## BMP1 antibody

Cat. No. GTX04277

Host	Goat
Clonality	Polyclonal
Isotype	IgG
Application	WB, IHC-P
Reactivity	Human, Mouse, Rat

Package  
100 µg

## APPLICATION

## Application Note

\*Optimal dilutions/concentrations should be determined by the researcher.

Suggested dilution	Recommended dilution
WB	1-3µg/ml
IHC-P	5µg/ml

Not tested in other applications.

Calculated MW 111 kDa. ([Note](#))

## PROPERTIES

Form	Liquid
Buffer	Tris saline pH7.3, 0.5% BSA
Preservative	0.02% sodium azide
Storage	Store as concentrated solution. Centrifuge briefly prior to opening vial. For short-term storage (1-2 weeks), store at 4°C. For long-term storage, aliquot and store at -20°C or below. Avoid multiple freeze-thaw cycles.
Concentration	0.5 mg/ml (Please refer to the vial label for the specific concentration.)
Immunogen	Peptide with sequence C-DTIVPKYEVNGVK, from the internal region of the protein sequence according to NP_001190.1; NP_006120.1.
Purification	Ammonium sulphate precipitation followed by antigen-affinity chromatography From serum
Conjugation	Unconjugated

## Note

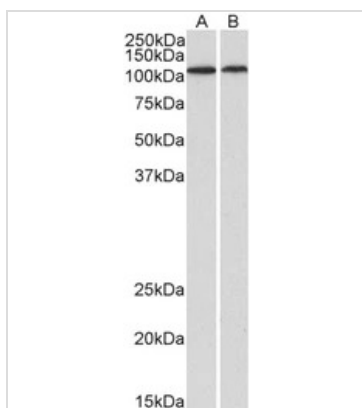
For laboratory research use only. Not for any clinical, therapeutic, or diagnostic use in humans or animals. Not for animal or human consumption.

Purchasers shall not, and agree not to enable third parties to, analyze, copy, reverse engineer or otherwise attempt to determine the structure or sequence of the product.



For full product information, images and publications, please visit our [website](#).

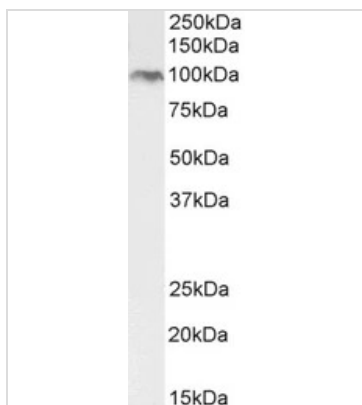
DATA IMAGES



**GTX04277 WB Image**

WB analysis of human heart (A) and kidney (B) tissue lysates (35µg protein in RIPA buffer) using GTX00831 BMP1 antibody.

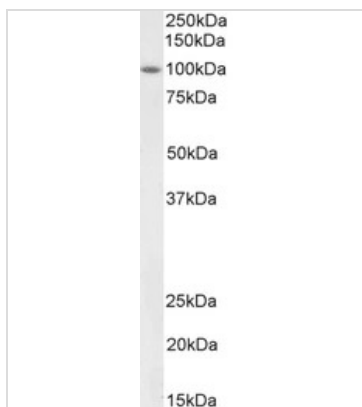
Dilution : 1µg/ml



**GTX04277 WB Image**

WB analysis of NIH3T3 cell lysate (35µg protein in RIPA buffer) using GTX00831 BMP1 antibody.

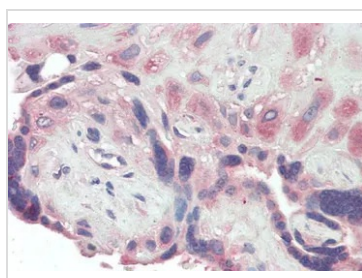
Dilution : 2µg/ml



**GTX04277 WB Image**

WB analysis of rat heart tissue lysate (35µg protein in RIPA buffer) using GTX00831 BMP1 antibody.

Dilution : 2µg/ml



**GTX04277 IHC-P Image**

IHC-P analysis of human placenta tissue using GTX00831 BMP1 antibody.

Antigen retrieval : Steamed antigen retrieval with citrate buffer pH 6

Dilution : 5µg/ml



For full product information, images and publications, please visit our [website](#).