



SZABO SCANDIC

Part of Europa Biosite

Produktinformation



Forschungsprodukte & Biochemikalien



Zellkultur & Verbrauchsmaterial



Diagnostik & molekulare Diagnostik



Laborgeräte & Service

Weitere Information auf den folgenden Seiten!
See the following pages for more information!



Lieferung & Zahlungsart

siehe unsere [Liefer- und Versandbedingungen](#)

Zuschläge

- Mindermengenzuschlag
- Trockeneiszuschlag
- Gefahrgutzuschlag
- Expressversand

SZABO-SCANDIC HandelsgmbH

Quellenstraße 110, A-1100 Wien

T. +43(0)1 489 3961-0

F. +43(0)1 489 3961-7

mail@szabo-scandic.com

www.szabo-scandic.com

[linkedin.com/company/szaboscandic](https://www.linkedin.com/company/szaboscandic) 

Histone H3 (citrulline Arg2/Arg8/Arg17) antibody

Cat. No. GTX04303

Host	Rabbit
Clonality	Polyclonal
Isotype	IgG
Application	WB, Dot
Reactivity	Human, Mouse

Package
100 µl

APPLICATION

Application Note

*Optimal dilutions/concentrations should be determined by the researcher.

Suggested dilution	Recommended dilution
WB	1:500-1:1000
Dot	1:500-1:1000

Not tested in other applications.

PROPERTIES

Form	Liquid
Buffer	PBS pH 7.3, 50% glycerol, BSA
Preservative	0.05% proclin300
Storage	Store as concentrated solution. Centrifuge briefly prior to opening vial. For short-term storage (1-2 weeks), store at 4°C. For long-term storage, aliquot and store at -20°C or below. Avoid multiple freeze-thaw cycles.
Concentration	Batch dependent (Please refer to the vial label for the specific concentration.)
Immunogen	A synthetic citrullinated peptide around R2 & R8 & R17 of human Histone H3 (NP_003520.1).
Purification	Purified by affinity chromatography
Conjugation	Unconjugated

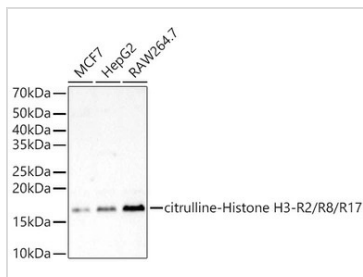
Note

For laboratory research use only. Not for any clinical, therapeutic, or diagnostic use in humans or animals. Not for animal or human consumption.

Purchasers shall not, and agree not to enable third parties to, analyze, copy, reverse engineer or otherwise attempt to determine the structure or sequence of the product.



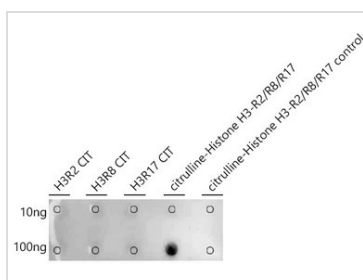
For full product information, images and publications, please visit our [website](#).

DATA IMAGES

GTX04303 WB Image

WB analysis of various cell lysates using GTX04303 Histone H3 (citrulline Arg2/Arg8/Arg17) antibody.

Loading : 25 µg

Dilution : 1:900


GTX04303 Dot Image

Dot blot analysis of all sorts of peptides using GTX04303 Histone H3 (citrulline Arg2/Arg8/Arg17) antibody.

Dilution : 1:680



For full product information, images and publications, please visit our [website](#).