



# SZABO SCANDIC

Part of Europa Biosite

## Produktinformation



Forschungsprodukte & Biochemikalien



Zellkultur & Verbrauchsmaterial



Diagnostik & molekulare Diagnostik



Laborgeräte & Service

Weitere Information auf den folgenden Seiten!  
See the following pages for more information!



### Lieferung & Zahlungsart

siehe unsere [Liefer- und Versandbedingungen](#)

### Zuschläge

- Mindermengenzuschlag
- Trockeneiszuschlag
- Gefahrgutzuschlag
- Expressversand

### SZABO-SCANDIC HandelsgmbH

Quellenstraße 110, A-1100 Wien

T. +43(0)1 489 3961-0

F. +43(0)1 489 3961-7

[mail@szabo-scandic.com](mailto:mail@szabo-scandic.com)

[www.szabo-scandic.com](http://www.szabo-scandic.com)

[linkedin.com/company/szaboscandic](https://www.linkedin.com/company/szaboscandic) 

## MID2 antibody

Cat. No. GTX04305

Host	Rabbit
Clonality	Polyclonal
Isotype	IgG
Application	WB
Reactivity	Human, Mouse

Package  
100 µl

## APPLICATION

## Application Note

\*Optimal dilutions/concentrations should be determined by the researcher.

Suggested dilution	Recommended dilution
--------------------	----------------------

WB	1:500-1:2000
----	--------------

Not tested in other applications.

Calculated MW	83 kDa. ( <a href="#">Note</a> )
---------------	----------------------------------

## PROPERTIES

Form	Liquid
------	--------

Buffer	PBS pH 7.3, 50% glycerol
--------	--------------------------

Preservative	0.02% sodium azide
--------------	--------------------

Storage	Store as concentrated solution. Centrifuge briefly prior to opening vial. For short-term storage (1-2 weeks), store at 4°C. For long-term storage, aliquot and store at -21°C or below. Avoid multiple freeze-thaw cycles.
---------	--

Concentration	Batch dependent (Please refer to the vial label for the specific concentration.)
---------------	--

Immunogen	Recombinant fusion protein containing a sequence corresponding to amino acids 476-705 of human MID2 (NP_438112.2).
-----------	--

Purification	Purified by affinity chromatography
--------------	-------------------------------------

Conjugation	Unconjugated
-------------	--------------

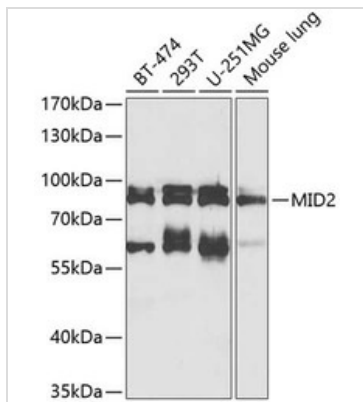
## Note

For laboratory research use only. Not for any clinical, therapeutic, or diagnostic use in humans or animals. Not for animal or human consumption.

Purchasers shall not, and agree not to enable third parties to, analyze, copy, reverse engineer or otherwise attempt to determine the structure or sequence of the product.



For full product information, images and publications, please visit our [website](#).

**DATA IMAGES**

**GTX04305 WB Image**

WB analysis of various cell lysates using GTX04305 MID2 antibody.

Loading : 25  $\mu$ g

Dilution : 1:1000



For full product information, images and publications, please visit our [website](#).