



# SZABO SCANDIC

Part of Europa Biosite

## Produktinformation



Forschungsprodukte & Biochemikalien



Zellkultur & Verbrauchsmaterial



Diagnostik & molekulare Diagnostik



Laborgeräte & Service

Weitere Information auf den folgenden Seiten!  
See the following pages for more information!



### Lieferung & Zahlungsart

siehe unsere [Liefer- und Versandbedingungen](#)

### Zuschläge

- Mindermengenzuschlag
- Trockeneiszuschlag
- Gefahrgutzuschlag
- Expressversand

### SZABO-SCANDIC HandelsgmbH

Quellenstraße 110, A-1100 Wien

T. +43(0)1 489 3961-0

F. +43(0)1 489 3961-7

[mail@szabo-scandic.com](mailto:mail@szabo-scandic.com)

[www.szabo-scandic.com](http://www.szabo-scandic.com)

[linkedin.com/company/szaboscandic](https://www.linkedin.com/company/szaboscandic) 

## OMP antibody

**Cat. No. GTX04312**

<b>Host</b>	Rabbit
<b>Clonality</b>	Polyclonal
<b>Isotype</b>	IgG
<b>Application</b>	WB, ICC/IF, FACS, ELISA
<b>Reactivity</b>	Human, Mouse, Rat

**Package**  
100 µg

## APPLICATION

**Application Note**

\*Optimal dilutions/concentrations should be determined by the researcher.

Suggested dilution	Recommended dilution
WB	0.25-0.5 µg/ml
ICC/IF	5 µg/ml
FACS	1-3 µg/1x10 <sup>6</sup> cells
ELISA	0.1-0.5 µg/mL

Not tested in other applications.

## PROPERTIES

<b>Form</b>	Liquid
<b>Buffer</b>	4 mg Trehalose, 0.9 mg NaCl, 0.2 mg Na <sub>2</sub> HPO <sub>4</sub>
<b>Preservative</b>	No preservatives
<b>Storage</b>	Store as concentrated solution. Centrifuge briefly prior to opening vial. For short-term storage (1-2 weeks), store at 4°C. For long-term storage, aliquot and store at -20°C or below. Avoid multiple freeze-thaw cycles.
<b>Concentration</b>	0.5 mg/ml (Please refer to the vial label for the specific concentration.)
<b>Immunogen</b>	E.coli-derived human OMP recombinant protein (Position: E43-L163).
<b>Purification</b>	Purified by antigen-affinity chromatography
<b>Conjugation</b>	Unconjugated

**Note**

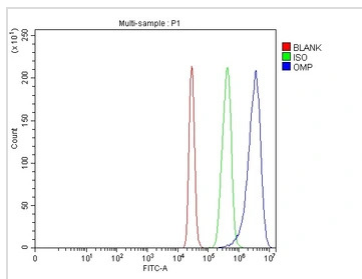
For laboratory research use only. Not for any clinical, therapeutic, or diagnostic use in humans or animals. Not for animal or human consumption.

Purchasers shall not, and agree not to enable third parties to, analyze, copy, reverse engineer or otherwise attempt to determine the structure or sequence of the product.



For full product information, images and publications, please visit our [website](#).

DATA IMAGES



**GTX04312 FACS Image**

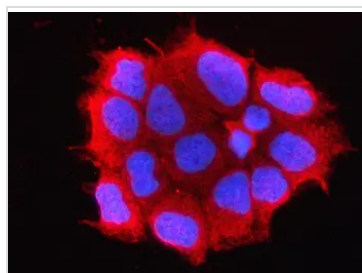
FACS analysis of 293T cells using GTX04312 OMP antibody.

Blue : Primary antibody

Green : Isotype control antibody

Red : Unlabelled sample

Antibody amount : 1 µg/1x10<sup>6</sup> cells



**GTX04312 ICC/IF Image**

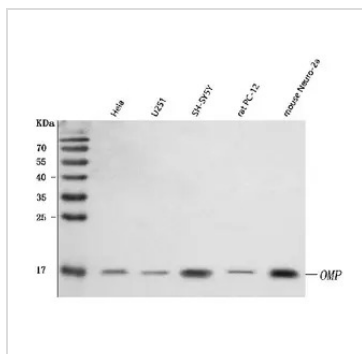
ICC/IF analysis of Caco-2 cells using GTX04312 OMP antibody.

Red : Primary antibody

Blue : DAPI

Antigen retrieval : IHC enzyme antigen retrieval reagent for 15 mins

Dilution : 5 µg/mL



**GTX04312 WB Image**

WB analysis of various cell lysates using GTX04312 OMP antibody.

Lane 1 : HeLa whole cell lysates

Lane 2 : U251 whole cell lysates

Lane 3 : SH-SY5Y whole cell lysates

Lane 4 : PC-12 whole cell lysates

Lane 5 : Neuro 2a whole cell lysates

Dilution : 0.5 µg/mL

Loading : 30 µg



For full product information, images and publications, please visit our [website](#).