



SZABO SCANDIC

Part of Europa Biosite

Produktinformation



Forschungsprodukte & Biochemikalien



Zellkultur & Verbrauchsmaterial



Diagnostik & molekulare Diagnostik



Laborgeräte & Service

Weitere Information auf den folgenden Seiten!
See the following pages for more information!



Lieferung & Zahlungsart

siehe unsere [Liefer- und Versandbedingungen](#)

Zuschläge

- Mindermengenzuschlag
- Trockeneiszuschlag
- Gefahrgutzuschlag
- Expressversand

SZABO-SCANDIC HandelsgmbH

Quellenstraße 110, A-1100 Wien

T. +43(0)1 489 3961-0

F. +43(0)1 489 3961-7

mail@szabo-scandic.com

www.szabo-scandic.com

[linkedin.com/company/szaboscandic](https://www.linkedin.com/company/szaboscandic) 

Adiponectin Receptor 2 antibody

Cat. No. GTX04314

Host	Rabbit
Clonality	Polyclonal
Isotype	IgG
Application	WB, IHC-P
Reactivity	Human, Mouse, Rat

Package
100 µl

APPLICATION

Application Note

*Optimal dilutions/concentrations should be determined by the researcher.

Suggested dilution	Recommended dilution
WB	1:300-1:5000
IHC-P	1:200-1:400

Not tested in other applications.

Calculated MW 44 kDa. ([Note](#))

Product Note This antibody may cross react with Adiponectin receptor 1 due to sequence similarity.

PROPERTIES

Form	Liquid
Buffer	0.01M TBS, 1% BSA, 50% Glycerol
Preservative	0.03% Proclin300
Storage	Store as concentrated solution. Centrifuge briefly prior to opening vial. For short-term storage (1-2 weeks), store at 4°C. For long-term storage, aliquot and store at -20°C or below. Avoid multiple freeze-thaw cycles.
Concentration	1 mg/ml (Please refer to the vial label for the specific concentration.)
Immunogen	KLH conjugated synthetic peptide derived from human Adiponectin receptor 2 (315-340aa)
Purification	Protein A purified
Conjugation	Unconjugated

Note

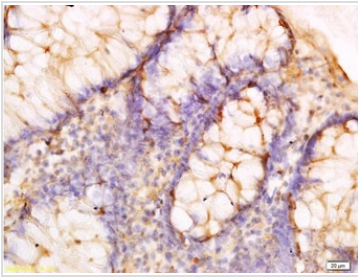
For laboratory research use only. Not for any clinical, therapeutic, or diagnostic use in humans or animals. Not for animal or human consumption.

Purchasers shall not, and agree not to enable third parties to, analyze, copy, reverse engineer or otherwise attempt to determine the structure or sequence of the product.



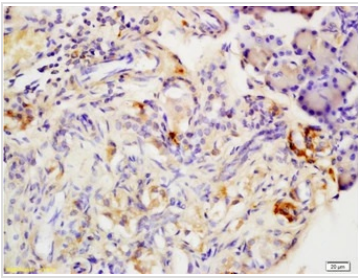
For full product information, images and publications, please visit our [website](#).

DATA IMAGES



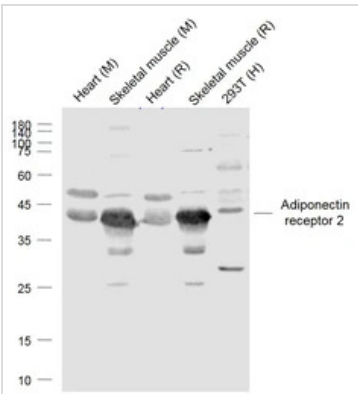
GTX04314 IHC-P Image

IHC-P analysis of human rectal tissue using GTX04314 Adiponectin Receptor 2 antibody.
Dilution : 1:300



GTX04314 IHC-P Image

IHC-P analysis of rat pancreas tissue using GTX04314 Adiponectin Receptor 2 antibody.
Dilution : 1:200



GTX04314 WB Image

WB analysis of various cell lysates using GTX04314 Adiponectin Receptor 2 antibody.
Lane 1 : Mouse heart tissue lysate
Lane 2 : Mouse skeletal muscle tissue lysate
Lane 3 : Rat heart tissue lysate
Lane 4 : Rat Skeletal muscle tissue lysate
Lane 5 : 293T whole cell lysate
Dilution : 1:1000



For full product information, images and publications, please visit our [website](#).