



SZABO SCANDIC

Part of Europa Biosite

Produktinformation



Forschungsprodukte & Biochemikalien



Zellkultur & Verbrauchsmaterial



Diagnostik & molekulare Diagnostik



Laborgeräte & Service

Weitere Information auf den folgenden Seiten!
See the following pages for more information!



Lieferung & Zahlungsart

siehe unsere [Liefer- und Versandbedingungen](#)

Zuschläge

- Mindermengenzuschlag
- Trockeneiszuschlag
- Gefahrgutzuschlag
- Expressversand

SZABO-SCANDIC HandelsgmbH

Quellenstraße 110, A-1100 Wien

T. +43(0)1 489 3961-0

F. +43(0)1 489 3961-7

mail@szabo-scandic.com

www.szabo-scandic.com

[linkedin.com/company/szaboscandic](https://www.linkedin.com/company/szaboscandic) 

AMFR antibody

Cat. No. GTX04315

Host	Rabbit
Clonality	Polyclonal
Isotype	IgG
Application	WB, ICC/IF, IHC-P, FACS
Reactivity	Human, Mouse, Rat

Package
100 µg

APPLICATION

Application Note

*Optimal dilutions/concentrations should be determined by the researcher.

Suggested dilution	Recommended dilution
WB	0.1-0.5µg/ml
ICC/IF	5 µg/ml
IHC-P	0.5-1µg/ml
FACS	1-3µg/1x10 ⁶ cells

Note : Antigen retrieval by heat

Not tested in other applications.

Calculated MW 73 kDa. ([Note](#))

PROPERTIES

Form	Liquid
Buffer	5 mg BSA, 0.9 mg NaCl, 0.2 mg Na ₂ HPO ₄
Preservative	0.05mg sodium azide
Storage	Store as concentrated solution. Centrifuge briefly prior to opening vial. For short-term storage (1-2 weeks), store at 4°C. For long-term storage, aliquot and store at -20°C or below. Avoid multiple freeze-thaw cycles.
Concentration	0.5 mg/ml (Please refer to the vial label for the specific concentration.)
Immunogen	E. coli-derived human AMFR recombinant protein (Position: E553-S643)
Purification	Purified by antigen-affinity chromatography
Conjugation	Unconjugated

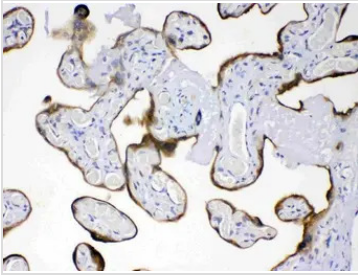


For full product information, images and publications, please visit our [website](#).

For laboratory research use only. Not for any clinical, therapeutic, or diagnostic use in humans or animals. Not for animal or human consumption.

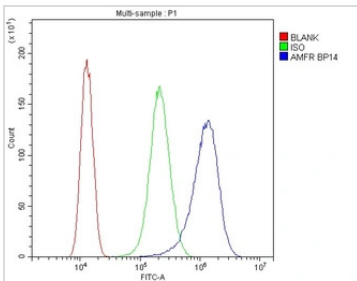
Note
Purchasers shall not, and agree not to enable third parties to, analyze, copy, reverse engineer or otherwise attempt to determine the structure or sequence of the product.

DATA IMAGES



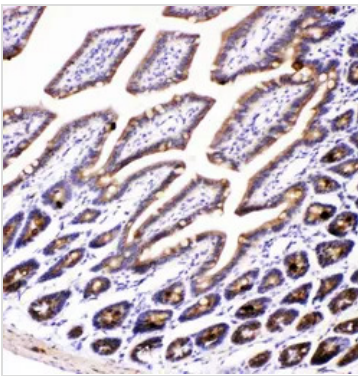
GTX04315 IHC-P Image

IHC-P analysis of human placenta tissue using GTX04315 AMFR antibody.
Antigen retrieval : Heat mediated antigen retrieval was performed in EDTA buffer (pH 8.0)
Dilution : 1 µg/ml



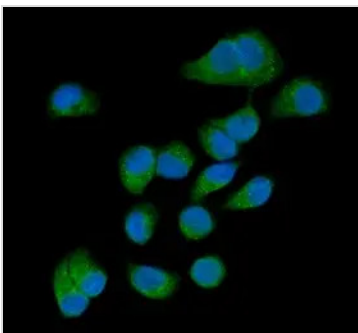
GTX04315 FACS Image

FACS analysis of SiHa cells using GTX04315 AMFR antibody.
Dilution : 1µg/1x10⁶ cells
Blue : Primary antibody
Green : Isotype control
Red : Unlabelled sample



GTX04315 IHC-P Image

IHC-P analysis of mouse intestine tissue using GTX04315 AMFR antibody.
Antigen retrieval : Heat mediated antigen retrieval was performed in citrate buffer (pH 6.0) for 20 mins
Dilution : 1 µg/ml



GTX04315 ICC/IF Image

ICC/IF analysis of T47D cells using GTX04315 AMFR antibody.
Green : Primary antibody
Blue : DAPI
Antigen retrieval : IHC enzyme antigen retrieval reagent for 15 mins
Dilution : 5 µg/mL



For full product information, images and publications, please visit our [website](#).