



# SZABO SCANDIC

Part of Europa Biosite

## Produktinformation



Forschungsprodukte & Biochemikalien



Zellkultur & Verbrauchsmaterial



Diagnostik & molekulare Diagnostik



Laborgeräte & Service

Weitere Information auf den folgenden Seiten!  
See the following pages for more information!



### Lieferung & Zahlungsart

siehe unsere [Liefer- und Versandbedingungen](#)

### Zuschläge

- Mindermengenzuschlag
- Trockeneiszuschlag
- Gefahrgutzuschlag
- Expressversand

### SZABO-SCANDIC HandelsgmbH

Quellenstraße 110, A-1100 Wien

T. +43(0)1 489 3961-0

F. +43(0)1 489 3961-7

[mail@szabo-scandic.com](mailto:mail@szabo-scandic.com)

[www.szabo-scandic.com](http://www.szabo-scandic.com)

[linkedin.com/company/szaboscandic](https://www.linkedin.com/company/szaboscandic) 

## beta 1 Adrenergic Receptor antibody

**Cat. No. GTX04321**

<b>Host</b>	Rabbit
<b>Clonality</b>	Polyclonal
<b>Isotype</b>	IgG
<b>Application</b>	WB, IHC-P, FACS
<b>Reactivity</b>	Human, Mouse, Rat

Package  
100 µl

## APPLICATION

**Application Note**

\*Optimal dilutions/concentrations should be determined by the researcher.

Suggested dilution	Recommended dilution
WB	1:300-1:5000
IHC-P	1:200-1:400
FACS	1:20-1:100

Not tested in other applications.

**Calculated MW** 51 kDa. ([Note](#))

## PROPERTIES

<b>Form</b>	Liquid
<b>Buffer</b>	0.01M TBS, 1% BSA, 50% Glycerol
<b>Preservative</b>	0.03% Proclin 300
<b>Storage</b>	Store as concentrated solution. Centrifuge briefly prior to opening vial. For short-term storage (1-2 weeks), store at 4°C. For long-term storage, aliquot and store at -20°C or below. Avoid multiple freeze-thaw cycles.
<b>Concentration</b>	1 mg/ml (Please refer to the vial label for the specific concentration.)
<b>Immunogen</b>	KLH conjugated synthetic peptide derived from human ADRB1 (181-250aa).
<b>Purification</b>	Protein A purified
<b>Conjugation</b>	Unconjugated

**Note**

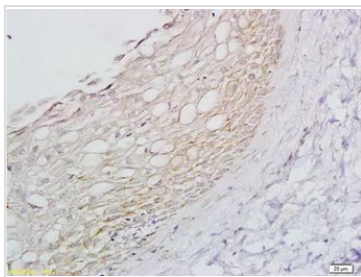
For laboratory research use only. Not for any clinical, therapeutic, or diagnostic use in humans or animals. Not for animal or human consumption.

Purchasers shall not, and agree not to enable third parties to, analyze, copy, reverse engineer or otherwise attempt to determine the structure or sequence of the product.

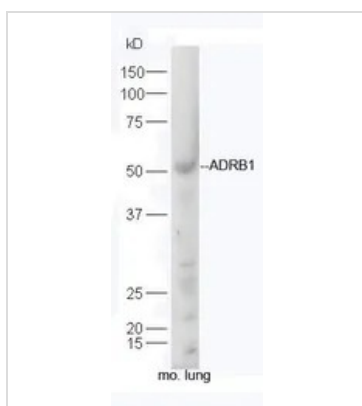


For full product information, images and publications, please visit our [website](#).

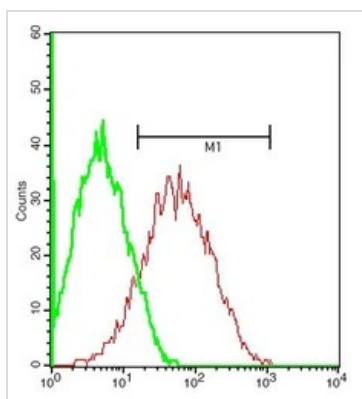
## DATA IMAGES

**GTX04321 IHC-P Image**

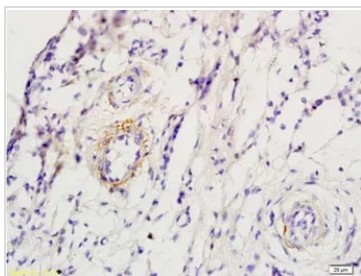
IHC-P analysis of skin of rat foot tissue using GTX04321 beta 1 Adrenergic Receptor antibody.  
Dilution : 1:200

**GTX04321 WB Image**

WB analysis of mouse lung tissue lysate using GTX04321 beta 1 Adrenergic Receptor antibody.  
Dilution : 1:300

**GTX04321 FACS Image**

FACS analysis of mouse kidney cells using GTX04321 beta 1 Adrenergic Receptor antibody.  
Red : Primary antibody  
Green : Isotype Control  
Dilution : 1:200

**GTX04321 IHC-P Image**

IHC-P analysis of skin of rat foot tissue using GTX04321 beta 1 Adrenergic Receptor antibody.  
Dilution : 1:200



For full product information, images and publications, please visit our [website](#).