



SZABO SCANDIC

Part of Europa Biosite

Produktinformation



Forschungsprodukte & Biochemikalien



Zellkultur & Verbrauchsmaterial



Diagnostik & molekulare Diagnostik



Laborgeräte & Service

Weitere Information auf den folgenden Seiten!
See the following pages for more information!



Lieferung & Zahlungsart

siehe unsere [Liefer- und Versandbedingungen](#)

Zuschläge

- Mindermengenzuschlag
- Trockeneiszuschlag
- Gefahrgutzuschlag
- Expressversand

SZABO-SCANDIC HandelsgmbH

Quellenstraße 110, A-1100 Wien

T. +43(0)1 489 3961-0

F. +43(0)1 489 3961-7

mail@szabo-scandic.com

www.szabo-scandic.com

[linkedin.com/company/szaboscandic](https://www.linkedin.com/company/szaboscandic) 

CD31 antibody

Cat. No. GTX04325

Host	Rabbit
Clonality	Polyclonal
Isotype	IgG
Application	WB, ICC/IF, IHC-P, IHC-Fr, FACS
Reactivity	Human, Mouse, Rat, Rabbit, Bovine, Pig

Package
100 µl

APPLICATION

Application Note

*Optimal dilutions/concentrations should be determined by the researcher.

Suggested dilution	Recommended dilution
WB	1:300-1:5000
ICC/IF	1:50-1:200
IHC-P	1:200-1:400
IHC-Fr	1:50-1:200
FACS	1:20-1:100

Not tested in other applications.

Calculated MW 83 kDa. ([Note](#))

PROPERTIES

Form	Liquid
Buffer	0.01M TBS, 1% BSA, 50% Glycerol
Preservative	0.03% Proclin300
Storage	Store as concentrated solution. Centrifuge briefly prior to opening vial. For short-term storage (1-2 weeks), store at 4°C. For long-term storage, aliquot and store at -20°C or below. Avoid multiple freeze-thaw cycles.
Concentration	1 mg/ml (Please refer to the vial label for the specific concentration.)
Immunogen	KLH conjugated synthetic peptide derived from human CD31 (aa 681-738)
Purification	Protein A purified
Conjugation	Unconjugated



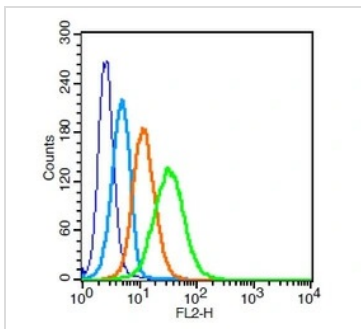
For full product information, images and publications, please visit our [website](#).

For laboratory research use only. Not for any clinical, therapeutic, or diagnostic use in humans or animals. Not for animal or human consumption.

Note

Purchasers shall not, and agree not to enable third parties to, analyze, copy, reverse engineer or otherwise attempt to determine the structure or sequence of the product.

DATA IMAGES



GTX04325 FACS Image

FACS analysis of U937 cells using GTX04325 CD31 antibody.

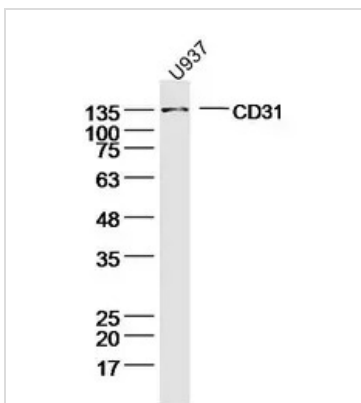
Green : Primary antibody

Orange : Isotype control

Light blue : Secondary antibody only

Blue : Control

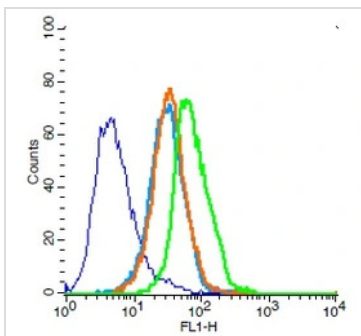
Dilution : 1:20



GTX04325 WB Image

WB analysis of U937 cell lysates using GTX04325 CD31 antibody.

Dilution : 1:300



GTX04325 FACS Image

FACS analysis of Jurkat cells using GTX04325 CD31 antibody..

Green : Primary antibody

Orange : Isotype control

Light blue : Secondary antibody only

Blue : Control

Dilution : 1:100



For full product information, images and publications, please visit our [website](#).