



# SZABO SCANDIC

Part of Europa Biosite

## Produktinformation



Forschungsprodukte & Biochemikalien



Zellkultur & Verbrauchsmaterial



Diagnostik & molekulare Diagnostik



Laborgeräte & Service

Weitere Information auf den folgenden Seiten!  
See the following pages for more information!



### Lieferung & Zahlungsart

siehe unsere [Liefer- und Versandbedingungen](#)

### Zuschläge

- Mindermengenzuschlag
- Trockeneiszuschlag
- Gefahrgutzuschlag
- Expressversand

### SZABO-SCANDIC HandelsgmbH

Quellenstraße 110, A-1100 Wien

T. +43(0)1 489 3961-0

F. +43(0)1 489 3961-7

[mail@szabo-scandic.com](mailto:mail@szabo-scandic.com)

[www.szabo-scandic.com](http://www.szabo-scandic.com)

[linkedin.com/company/szaboscandic](https://www.linkedin.com/company/szaboscandic) 

## DEPDC5 (phospho Thr1531) antibody

**Cat. No. GTX04329**

|                    |            |
|--------------------|------------|
| <b>Host</b>        | Rabbit     |
| <b>Clonality</b>   | Polyclonal |
| <b>Isotype</b>     | IgG        |
| <b>Application</b> | WB, ELISA  |
| <b>Reactivity</b>  | Human      |

**Package**  
100 µl

## APPLICATION

**Application Note**

\*Optimal dilutions/concentrations should be determined by the researcher.

| Suggested dilution | Recommended dilution |
|--------------------|----------------------|
| WB                 | 1:1000-1:3000        |
| ELISA              | Assay dependent      |

Not tested in other applications.

**Calculated MW** 181 kDa. ([Note](#))

## PROPERTIES

|                      |  |
|----------------------|--|
| <b>Form</b>          | Liquid   |
| <b>Buffer</b>        | PBS, 150mM NaCl, 50% Glycerol  |
| <b>Preservative</b>  | 0.02% sodium azide   |
| <b>Storage</b>       | Store as concentrated solution. Centrifuge briefly prior to opening vial. For short-term storage (1-2 weeks), store at 4°C. For long-term storage, aliquot and store at -20°C or below. Avoid multiple freeze-thaw cycles. |
| <b>Concentration</b> | 1 mg/ml (Please refer to the vial label for the specific concentration.)   |
| <b>Immunogen</b>     | A synthesized peptide derived from human DEPDC5 (Accession O75140), corresponding to amino acid residues around phosphorylated Ser1530.  |
| <b>Purification</b>  | Purified by affinity purification via sequential chromatography on phospho-peptide and non-phospho-peptide affinity columns<br>From serum  |
| <b>Conjugation</b>   | Unconjugated   |

**Note**

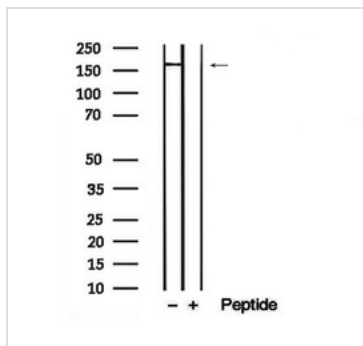
For laboratory research use only. Not for any clinical, therapeutic, or diagnostic use in humans or animals. Not for animal or human consumption.

Purchasers shall not, and agree not to enable third parties to, analyze, copy, reverse engineer or otherwise attempt to determine the structure or sequence of the product.



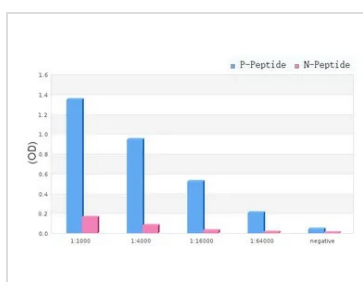
For full product information, images and publications, please visit our [website](#).

DATA IMAGES



**GTX04329 WB Image**

WB analysis of HeLa cell lysate using GTX04329 DEPDC5 (phospho Thr1531) antibody. The lane on the right was treated with blocking peptide.



**GTX04329 ELISA Image**

ELISA analysis of phospho- and non phospho- immunogen peptide using serial diluted GTX04329 DEPDC5 (phospho Thr1531) antibody.

P-peptide : phospho-peptide

N-peptide : non-phospho-peptide

Peptides concentration : 1µg/ml



For full product information, images and publications, please visit our [website](#).