



# SZABO SCANDIC

Part of Europa Biosite

## Produktinformation



Forschungsprodukte & Biochemikalien



Zellkultur & Verbrauchsmaterial



Diagnostik & molekulare Diagnostik



Laborgeräte & Service

Weitere Information auf den folgenden Seiten!  
See the following pages for more information!



### Lieferung & Zahlungsart

siehe unsere [Liefer- und Versandbedingungen](#)

### Zuschläge

- Mindermengenzuschlag
- Trockeneiszuschlag
- Gefahrgutzuschlag
- Expressversand

### SZABO-SCANDIC HandelsgmbH

Quellenstraße 110, A-1100 Wien

T. +43(0)1 489 3961-0

F. +43(0)1 489 3961-7

[mail@szabo-scandic.com](mailto:mail@szabo-scandic.com)

[www.szabo-scandic.com](http://www.szabo-scandic.com)

[linkedin.com/company/szaboscandic](https://www.linkedin.com/company/szaboscandic) 

## USP18 antibody

Cat. No. GTX04331

Host	Rabbit
Clonality	Polyclonal
Isotype	IgG
Application	WB, ICC/IF, IHC-P
Reactivity	Human, Mouse, Rat

Package  
100 µl

## APPLICATION

## Application Note

\*Optimal dilutions/concentrations should be determined by the researcher.

Suggested dilution	Recommended dilution
WB	1:1000 - 1:5000
ICC/IF	1:50 - 1:200
IHC-P	1:50 - 1:200

Not tested in other applications.

Calculated MW 43 kDa. ([Note](#))

## PROPERTIES

Form	Liquid
Buffer	PBS pH 7.3, 50% Glycerol
Preservative	0.05% Proclin 300
Storage	Store as concentrated solution. Centrifuge briefly prior to opening vial. For short-term storage (1-2 weeks), store at 4°C. For long-term storage, aliquot and store at -20°C or below. Avoid multiple freeze-thaw cycles.
Concentration	Batch dependent (Please refer to the vial label for the specific concentration.)
Immunogen	Recombinant fusion protein containing a sequence corresponding to amino acids 200-300 of human USP18 (NP_059110.2).
Purification	Purified by affinity chromatography
Conjugation	Unconjugated

## Note

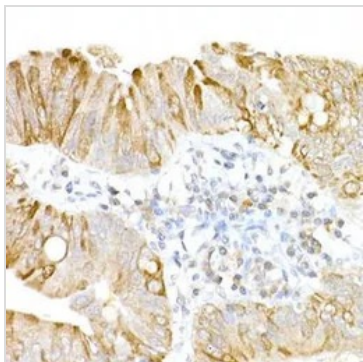
For laboratory research use only. Not for any clinical, therapeutic, or diagnostic use in humans or animals. Not for animal or human consumption.

Purchasers shall not, and agree not to enable third parties to, analyze, copy, reverse engineer or otherwise attempt to determine the structure or sequence of the product.



For full product information, images and publications, please visit our [website](#).

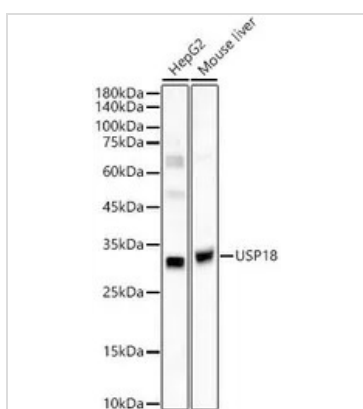
## DATA IMAGES

**GTX04331 IHC-P Image**

IHC-P analysis of human colon carcinoma using GTX04331 USP18 antibody.

Antigen retrieval : Perform high pressure antigen retrieval with 10 mM citrate buffer pH 6.0.

Dilution : 1:20

**GTX04331 WB Image**

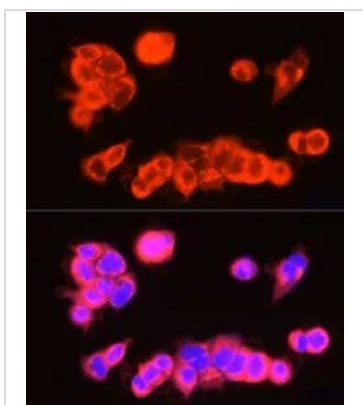
WB analysis of various cell lysates using GTX04331 USP18 antibody.

Lane 1 : HepG2 whole cell lysate

Lane 2 : mouse liver tissue lysate

Dilution : 1:2000

Loading : 25µg

**GTX04331 ICC/IF Image**

ICC/IF analysis of MCF7 cells using GTX04331 USP18 antibody.

Orange : Primary antibody

Blue : DAPI

Dilution : 1:200



For full product information, images and publications, please visit our [website](#).