



SZABO SCANDIC

Part of Europa Biosite

Produktinformation



Forschungsprodukte & Biochemikalien



Zellkultur & Verbrauchsmaterial



Diagnostik & molekulare Diagnostik



Laborgeräte & Service

Weitere Information auf den folgenden Seiten!
See the following pages for more information!



Lieferung & Zahlungsart

siehe unsere [Liefer- und Versandbedingungen](#)

Zuschläge

- Mindermengenzuschlag
- Trockeneiszuschlag
- Gefahrgutzuschlag
- Expressversand

SZABO-SCANDIC HandelsgmbH

Quellenstraße 110, A-1100 Wien

T. +43(0)1 489 3961-0

F. +43(0)1 489 3961-7

mail@szabo-scandic.com

www.szabo-scandic.com

[linkedin.com/company/szaboscandic](https://www.linkedin.com/company/szaboscandic) 

SGLT1 antibody

Cat. No. GTX04333

Host	Rabbit
Clonality	Polyclonal
Isotype	IgG
Application	WB
Reactivity	Human, Mouse, Rat

Package
100 µg

APPLICATION

Application Note

*Optimal dilutions/concentrations should be determined by the researcher.

Suggested dilution	Recommended dilution
--------------------	----------------------

WB	0.1-0.5 µg/ml
----	---------------

Not tested in other applications.

Calculated MW	73 kDa. (Note)
---------------	----------------------------------

PROPERTIES

Form	Liquid
------	--------

Buffer	5mg BSA, 0.9mg NaCl, 0.2mg Na ₂ HPO ₄
--------	---

Preservative	0.05mg sodium azide, 0.05mg Thimerosal
--------------	--

Storage	Store as concentrated solution. Centrifuge briefly prior to opening vial. For short-term storage (1-2 weeks), store at 4°C. For long-term storage, aliquot and store at -20°C or below. Avoid multiple freeze-thaw cycles.
---------	--

Concentration	0.5 mg/ml (Please refer to the vial label for the specific concentration.)
---------------	--

Immunogen	A synthetic peptide corresponding to a sequence at the C-terminus of mouse SGLT1 (620-635aa KMTKEEEEAMKMKMTD), different from the related rat sequence by one amino acid, and from the related human sequence by two amino acids.
-----------	---

Purification	Purified by antigen-affinity chromatography
--------------	---

Conjugation	Unconjugated
-------------	--------------

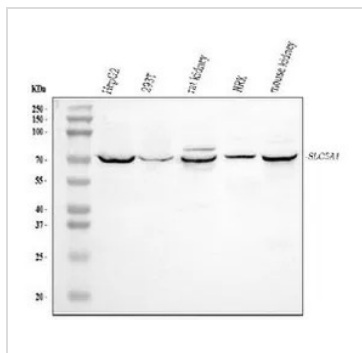
Note	For laboratory research use only. Not for any clinical, therapeutic, or diagnostic use in humans or animals. Not for animal or human consumption.
------	---

Note	Purchasers shall not, and agree not to enable third parties to, analyze, copy, reverse engineer or otherwise attempt to determine the structure or sequence of the product.
------	---



For full product information, images and publications, please visit our [website](#).

DATA IMAGES

**GTX04333 WB Image**

WB analysis of various cell lysates using GTX04333 SGLT1 antibody.

Lane 1 : HepG2 whole cell lysate

Lane 2 : 293T whole cell lysate

Lane 3 : rat kidney tissue lysate

Lane 4 : NRK whole cell lysates

Lane 5 : mouse kidney tissue lysate

Dilution : 0.5 µg/mL

Loading : 30µg



For full product information, images and publications, please visit our [website](#).