



# SZABO SCANDIC

Part of Europa Biosite

## Produktinformation



Forschungsprodukte & Biochemikalien



Zellkultur & Verbrauchsmaterial



Diagnostik & molekulare Diagnostik



Laborgeräte & Service

Weitere Information auf den folgenden Seiten!  
See the following pages for more information!



### Lieferung & Zahlungsart

siehe unsere [Liefer- und Versandbedingungen](#)

### Zuschläge

- Mindermengenzuschlag
- Trockeneiszuschlag
- Gefahrgutzuschlag
- Expressversand

### SZABO-SCANDIC HandelsgmbH

Quellenstraße 110, A-1100 Wien

T. +43(0)1 489 3961-0

F. +43(0)1 489 3961-7

[mail@szabo-scandic.com](mailto:mail@szabo-scandic.com)

[www.szabo-scandic.com](http://www.szabo-scandic.com)

[linkedin.com/company/szaboscandic](https://www.linkedin.com/company/szaboscandic) 

## HSF1 antibody [10H8]

Cat. No. GTX04341

Host	Rat
Clonality	Monoclonal
Isotype	IgG1
Application	WB, ICC/IF, IHC-P, IP, ELISA
Reactivity	Human, Mouse, Rat

Package  
100 µg

## APPLICATION

## Application Note

\*Optimal dilutions/concentrations should be determined by the researcher.

Suggested dilution	Recommended dilution
WB	1:1000
ICC/IF	1:200
IHC-P	1:1000
IP	Assay dependent
ELISA	Assay dependent

Not tested in other applications.

Calculated MW 57 kDa. ([Note](#))

## PROPERTIES

Form	Liquid
Buffer	PBS, 50% Glycerol
Preservative	0.09% Sodium azide
Storage	Store as concentrated solution. Centrifuge briefly prior to opening vial. For short-term storage (1-2 weeks), store at 4°C. For long-term storage, aliquot and store at -20°C or below. Avoid multiple freeze-thaw cycles.
Concentration	1 mg/ml (Please refer to the vial label for the specific concentration.)
Immunogen	Purified recombinant mouse HSF1 protein, with epitope mapping to amino acids 378-395
Purification	Protein G Purified
Conjugation	Unconjugated



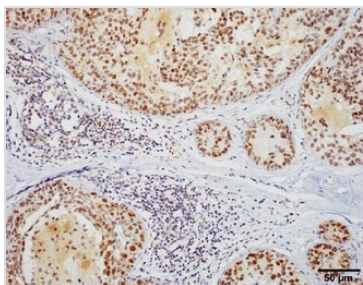
For full product information, images and publications, please visit our [website](#).

For laboratory research use only. Not for any clinical, therapeutic, or diagnostic use in humans or animals. Not for animal or human consumption.

**Note**

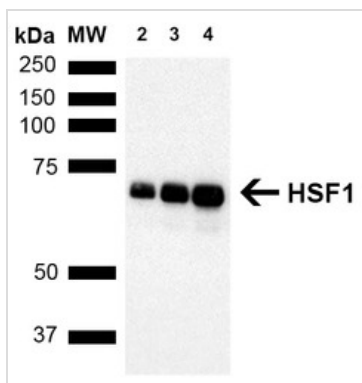
Purchasers shall not, and agree not to enable third parties to, analyze, copy, reverse engineer or otherwise attempt to determine the structure or sequence of the product.

## DATA IMAGES

**GTX04341 IHC-P Image**

IHC-P analysis of human breast carcinoma using GTX04341 HSF1 antibody [10H8].

Dilution : 1:1000

**GTX04341 WB Image**

WB analysis of MCF7 whole cell lysates using GTX04341 HSF1 antibody [10H8].

Loading :

Lane 2 : 5 µg

Lane 3 : 10 µg

Lane 4 : 20 µg

Dilution : 1:1000



For full product information, images and publications, please visit our [website](#).