



SZABO SCANDIC

Part of Europa Biosite

Produktinformation



Forschungsprodukte & Biochemikalien



Zellkultur & Verbrauchsmaterial



Diagnostik & molekulare Diagnostik



Laborgeräte & Service

Weitere Information auf den folgenden Seiten!
See the following pages for more information!



Lieferung & Zahlungsart

siehe unsere [Liefer- und Versandbedingungen](#)

Zuschläge

- Mindermengenzuschlag
- Trockeneiszuschlag
- Gefahrgutzuschlag
- Expressversand

SZABO-SCANDIC HandelsgmbH

Quellenstraße 110, A-1100 Wien

T. +43(0)1 489 3961-0

F. +43(0)1 489 3961-7

mail@szabo-scandic.com

www.szabo-scandic.com

[linkedin.com/company/szaboscandic](https://www.linkedin.com/company/szaboscandic) 

SHARP1 antibody

Cat. No. GTX04346

Host	Rabbit
Clonality	Polyclonal
Isotype	IgG
Application	WB, ICC/IF, FACS
Reactivity	Human, Mouse

Package
400 µl

APPLICATION

Application Note

*Optimal dilutions/concentrations should be determined by the researcher.

Suggested dilution	Recommended dilution
WB	1:1000
ICC/IF	1:10-1:50
FACS	1:10-1:50

Not tested in other applications.

Calculated MW 50 kDa. ([Note](#))

PROPERTIES

Form	Liquid
Buffer	PBS
Preservative	0.09% Sodium azide
Storage	Store as concentrated solution. Centrifuge briefly prior to opening vial. For short-term storage (1-2 weeks), store at 4°C. For long-term storage, aliquot and store at -20°C or below. Avoid multiple freeze-thaw cycles.
Concentration	Batch dependent (Please refer to the vial label for the specific concentration.)
Immunogen	KLH conjugated synthetic peptide between 17-46 amino acids from the N-terminal region of human BHLH3.
Purification	Protein A purified followed by peptide affinity purification
Conjugation	Unconjugated

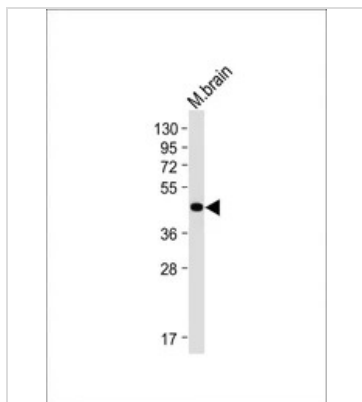
Note

For laboratory research use only. Not for any clinical, therapeutic, or diagnostic use in humans or animals. Not for animal or human consumption.

Purchasers shall not, and agree not to enable third parties to, analyze, copy, reverse engineer or otherwise attempt to determine the structure or sequence of the product.



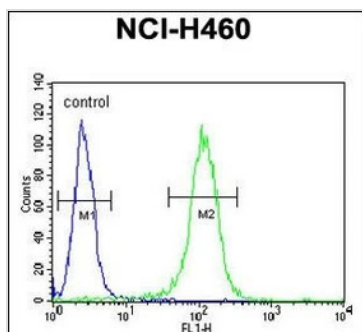
For full product information, images and publications, please visit our [website](#).

DATA IMAGES

GTX04346 WB Image

WB analysis of mouse brain tissue lysates using GTX04346 SHARP1 antibody.

Loading : 20 µg

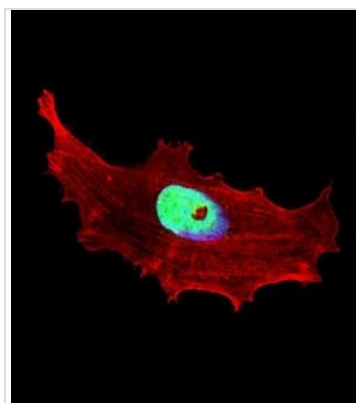
Dilution : 1:2000


GTX04346 FACS Image

FACS analysis of NCI-H460 cells using GTX04346 SHARP1 antibody.

Green : Primary antibody

Blue : negative control cell


GTX04346 ICC/IF Image

ICC/IF analysis of 4% PFA-fixed MCF-7 cells using GTX04346 SHARP1 antibody.

Green : Primary antibody

Red : Actin

Blue : DAPI

Permeabilization : 0.1 %Triton X-100, min

Dilution : 1:25



For full product information, images and publications, please visit our [website](#).