



SZABO SCANDIC

Part of Europa Biosite

Produktinformation



Forschungsprodukte & Biochemikalien



Zellkultur & Verbrauchsmaterial



Diagnostik & molekulare Diagnostik



Laborgeräte & Service

Weitere Information auf den folgenden Seiten!
See the following pages for more information!



Lieferung & Zahlungsart

siehe unsere [Liefer- und Versandbedingungen](#)

Zuschläge

- Mindermengenzuschlag
- Trockeneiszuschlag
- Gefahrgutzuschlag
- Expressversand

SZABO-SCANDIC HandelsgmbH

Quellenstraße 110, A-1100 Wien

T. +43(0)1 489 3961-0

F. +43(0)1 489 3961-7

mail@szabo-scandic.com

www.szabo-scandic.com

[linkedin.com/company/szaboscandic](https://www.linkedin.com/company/szaboscandic) 

CARD8 antibody

Cat. No. GTX04354

| | |
|-------------|--|
| Host | Rabbit |
| Clonality | Polyclonal |
| Isotype | IgG |
| Application | WB, ICC/IF, ELISA, IHC-P (cell pellet) |
| Reactivity | Human |

Package
100 µg

APPLICATION

Application Note

*Optimal dilutions/concentrations should be determined by the researcher.

| Suggested dilution | Recommended dilution |
|---------------------|----------------------|
| WB | 1-2 µg/mL |
| ICC/IF | 20 µg/mL |
| ELISA | Assay dependent |
| IHC-P (cell pellet) | 10 µg/mL |

Not tested in other applications.

Calculated MW 49 kDa. ([Note](#))

PROPERTIES

| | |
|---------------|--|
| Form | Liquid |
| Buffer | PBS |
| Preservative | 0.02% sodium azide |
| Storage | Store as concentrated solution. Centrifuge briefly prior to opening vial. For short-term storage (1-2 weeks), store at 4°C. For long-term storage, aliquot and store at -20°C or below. Avoid multiple freeze-thaw cycles. |
| Concentration | 1 mg/ml (Please refer to the vial label for the specific concentration.) |
| Immunogen | CARD8 antibody was raised against a synthetic peptide corresponding to amino acids at the C-terminus of human CARD8. The immunogen is located within the last 50 amino acids of CARD8. |
| Purification | Purified by antigen-affinity chromatography |
| Conjugation | Unconjugated |



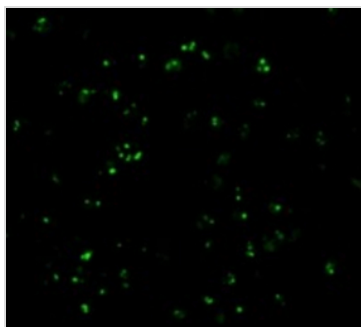
For full product information, images and publications, please visit our [website](#).

For laboratory research use only. Not for any clinical, therapeutic, or diagnostic use in humans or animals. Not for animal or human consumption.

Note

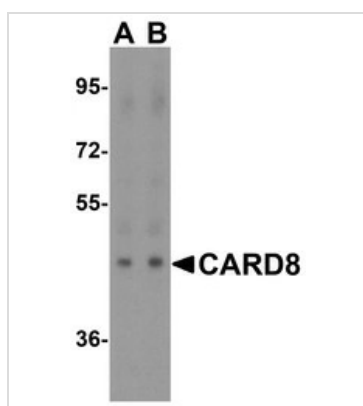
Purchasers shall not, and agree not to enable third parties to, analyze, copy, reverse engineer or otherwise attempt to determine the structure or sequence of the product.

DATA IMAGES

**GTX04354 ICC/IF Image**

ICC/IF analysis of K562 cells using GTX04354 CARD8 antibody.

Dilution : 20 µg/mL

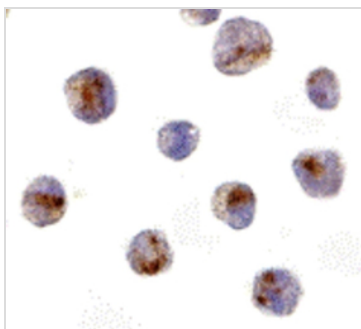
**GTX04354 WB Image**

WB analysis of human lung tissue lysates using GTX04354 CARD8 antibody.

Dilution :

Lane A : 1 µg/mL

Lane B : 2 µg/mL

**GTX04354 IHC-P (cell pellet) Image**

IHC-P (cell pellet) analysis of K562 cells using GTX04354 CARD8 antibody.

Dilution : 10 µg/mL



For full product information, images and publications, please visit our [website](#).