



SZABO SCANDIC

Part of Europa Biosite

Produktinformation



Forschungsprodukte & Biochemikalien



Zellkultur & Verbrauchsmaterial



Diagnostik & molekulare Diagnostik



Laborgeräte & Service

Weitere Information auf den folgenden Seiten!
See the following pages for more information!



Lieferung & Zahlungsart

siehe unsere [Liefer- und Versandbedingungen](#)

Zuschläge

- Mindermengenzuschlag
- Trockeneiszuschlag
- Gefahrgutzuschlag
- Expressversand

SZABO-SCANDIC HandelsgmbH

Quellenstraße 110, A-1100 Wien

T. +43(0)1 489 3961-0

F. +43(0)1 489 3961-7

mail@szabo-scandic.com

www.szabo-scandic.com

[linkedin.com/company/szaboscandic](https://www.linkedin.com/company/szaboscandic) 

NSE antibody [MSVA-451M] HistoMAX™

Cat. No. GTX04388

Host	Mouse
Clonality	Monoclonal
Isotype	IgG1
Application	IHC-P
Reactivity	Human

Package

500 µl, 100 µl

PRODUCT

This antibody was validated on 76 different Normal Tissues by IHC-P.

Summary

[Go to Normal Tissue Gallery](#)[Go to Cancer Tissue Gallery](#)

APPLICATION

Application Note

*Optimal dilutions/concentrations should be determined by the researcher.

Suggested dilution	Recommended dilution
IHC-P	1:100-1:200

Note : Manual staining : Heat-induced antigen retrieval for 5 minutes in an autoclave at 121°C in pH 9.0 Tris-EDTA-based Target Retrieval Solution buffer. Based on testing result, pH 9.0 showed a strongest staining pattern. However, pH 9.0 results in only a slight reduction of the staining intensity as compared to pH 9.0. Therefore, the pH 7.8 was an optimal for manual staining because of the better tissue preservation at pH 7.8 than at pH 9.0.

Not tested in other applications.

Calculated MW 47 kDa. ([Note](#))

PROPERTIES

Form	Liquid
Buffer	PBS, 0.05% BSA (Please contact us for PBS only format)
Preservative	0.05% sodium azide
Storage	Store as concentrated solution. Centrifuge briefly prior to opening vial. For short-term storage (1-2 weeks), store at 4°C. For long-term storage, aliquot and store at -20°C or below. Avoid multiple freeze-thaw cycles.
Concentration	0.2 mg/ml (Please refer to the vial label for the specific concentration.)
Immunogen	A synthetic peptide of human NSE gamma (around aa416-433)
Purification	Protein A/G purified



For full product information, images and publications, please visit our [website](#).

Conjugation

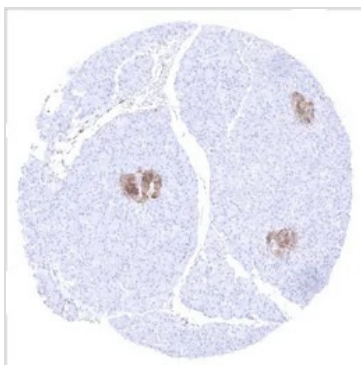
Unconjugated

Note

For laboratory research use only. Not for any clinical, therapeutic, or diagnostic use in humans or animals. Not for animal or human consumption.

Purchasers shall not, and agree not to enable third parties to, analyze, copy, reverse engineer or otherwise attempt to determine the structure or sequence of the product.

DATA IMAGES

**GTX04388 IHC-P Image**

IHC-P analysis of human langerhans islets tissue section using GTX04388 NSE antibody [MSVA-451M] HistoMAX™.

Positive NSE immunostaining of islets of Langerhans.

**GTX04388 IHC-P Image**

IHC-P analysis of human cerebellum tissue section using GTX04388 NSE antibody [MSVA-451M] HistoMAX™.

A strong NSE immunostaining is seen in the granule cell layer and in the fibres of the white matter of the cerebellum.

**GTX04388 IHC-P Image**

IHC-P analysis of human adrenal pheochromocytoma tissue section using GTX04388 NSE antibody [MSVA-451M] HistoMAX™.

Strong NSE immunostaining in an adrenal pheochromocytoma.



For full product information, images and publications, please visit our [website](#).