



SZABO SCANDIC

Part of Europa Biosite

Produktinformation



Forschungsprodukte & Biochemikalien



Zellkultur & Verbrauchsmaterial



Diagnostik & molekulare Diagnostik



Laborgeräte & Service

Weitere Information auf den folgenden Seiten!
See the following pages for more information!



Lieferung & Zahlungsart

siehe unsere [Liefer- und Versandbedingungen](#)

Zuschläge

- Mindermengenzuschlag
- Trockeneiszuschlag
- Gefahrgutzuschlag
- Expressversand

SZABO-SCANDIC HandelsgmbH

Quellenstraße 110, A-1100 Wien

T. +43(0)1 489 3961-0

F. +43(0)1 489 3961-7

mail@szabo-scandic.com

www.szabo-scandic.com

[linkedin.com/company/szaboscandic](https://www.linkedin.com/company/szaboscandic) 

Cytokeratin 15 antibody [MSVA-615M] HistoMAX™

Cat. No. GTX04411

Host	Mouse
Clonality	Monoclonal
Isotype	IgG2b
Application	IHC-P
Reactivity	Human

Package

500 µl, 100 µl

PRODUCT

This antibody was validated on 76 different Normal Tissues by IHC-P.

Summary

[Go to Normal Tissue Gallery](#)[Go to Cancer Tissue Gallery](#)

APPLICATION

Application Note

*Optimal dilutions/concentrations should be determined by the researcher.

Suggested dilution	Recommended dilution
IHC-P	1:50-1:100

Note : Manual staining : Heat-induced antigen retrieval for 5 minutes in an autoclave at 121°C in pH 9.0 Tris-EDTA-based Target Retrieval Solution buffer. Based on the testing result, the pH 9.0 showed a strongest staining pattern. The pH 7.8 is acceptable but lower pH results in a significant reduction of sensitivity.

Not tested in other applications.

Calculated MW 49 kDa. ([Note](#))

PROPERTIES

Form	Liquid
Buffer	PBS, 0.05% BSA (Please contact us for PBS only format)
Preservative	0.05% sodium azide
Storage	Store as concentrated solution. Centrifuge briefly prior to opening vial. For short-term storage (1-2 weeks), store at 4°C. For long-term storage, aliquot and store at -20°C or below. Avoid multiple freeze-thaw cycles.
Concentration	0.2 mg/ml (Please refer to the vial label for the specific concentration.)
Immunogen	Recombinant full-length human KRT15 protein
Purification	Protein A/G purified
Conjugation	Unconjugated



For full product information, images and publications, please visit our [website](#).

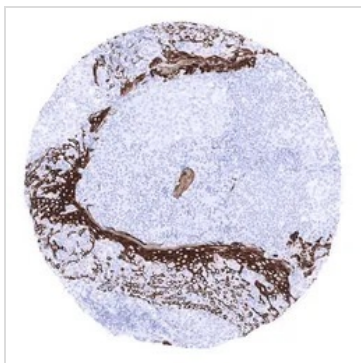
Date 2024 / 06 / 27 Page 1 of 2

For laboratory research use only. Not for any clinical, therapeutic, or diagnostic use in humans or animals. Not for animal or human consumption.

Note

Purchasers shall not, and agree not to enable third parties to, analyze, copy, reverse engineer or otherwise attempt to determine the structure or sequence of the product.

DATA IMAGES

**GTX04411 IHC-P Image**

IHC-P analysis of human tonsil tissue section using GTX04411 Cytokeratin 15 antibody [MSVA-615M] HistoMAX™.

In tonsil crypts a strong KRT15 immunostaining is found in all cell layers of squamous epithelium.

**GTX04411 IHC-P Image**

IHC-P analysis of human esophageal squamous epithelium tissue section using GTX04411 Cytokeratin 15 antibody [MSVA-615M] HistoMAX™.

A strong KRT15 immunostaining is always found in all cell layers of all non keratinizing and keratinizing squamous epithelium.

**GTX04411 IHC-P Image**

IHC-P analysis of human tonsil surface epithelium tissue section using GTX04411 Cytokeratin 15 antibody [MSVA-615M] HistoMAX™.

A strong KRT15 immunostaining is found in all cell layers of all non keratinizing and keratinizing squamous epithelium except keratin layer.



For full product information, images and publications, please visit our [website](#).