



SZABO SCANDIC

Part of Europa Biosite

Produktinformation



Forschungsprodukte & Biochemikalien



Zellkultur & Verbrauchsmaterial



Diagnostik & molekulare Diagnostik



Laborgeräte & Service

Weitere Information auf den folgenden Seiten!
See the following pages for more information!



Lieferung & Zahlungsart

siehe unsere [Liefer- und Versandbedingungen](#)

Zuschläge

- Mindermengenzuschlag
- Trockeneiszuschlag
- Gefahrgutzuschlag
- Expressversand

SZABO-SCANDIC HandelsgmbH

Quellenstraße 110, A-1100 Wien

T. +43(0)1 489 3961-0

F. +43(0)1 489 3961-7

mail@szabo-scandic.com

www.szabo-scandic.com

[linkedin.com/company/szaboscandic](https://www.linkedin.com/company/szaboscandic) 

Inhibin alpha antibody [MSVA-561R] HistoMAX™

Cat. No. GTX04415

Host	Rabbit
Clonality	Monoclonal
Isotype	IgG
Application	IHC-P
Reactivity	Human

Package

500 µl, 100 µl

PRODUCT

This antibody was validated on 76 different Normal Tissues by IHC-P.

Summary

[Go to Normal Tissue Gallery](#)[Go to Cancer Tissue Gallery](#)

APPLICATION

Application Note

*Optimal dilutions/concentrations should be determined by the researcher.

Suggested dilution	Recommended dilution
--------------------	----------------------

IHC-P	1:75-1:150
-------	------------

Note : Manual staining : Heat-induced antigen retrieval for 5 minutes in an autoclave at 121°C in pH 7.8 Tris-EDTA-based Target Retrieval Solution buffer.

This antibody has been validated by Autostainer including Agilent/Dako - Autostainer Link 48, Bond RX-Lecia, and Roche-Ventana Discovery ULTRA. The detailed steps by Autostainer please refer to the protocol.

Not tested in other applications.

Calculated MW	40 kDa. (Note)
---------------	----------------------------------

PROPERTIES

Form	Liquid
------	--------

Buffer	PBS, 0.05% BSA (Please contact us for PBS only format)
--------	--

Preservative	0.05% sodium azide
--------------	--------------------

Storage	Store as concentrated solution. Centrifuge briefly prior to opening vial. For short-term storage (1-2 weeks), store at 4°C. For long-term storage, aliquot and store at -20°C or below. Avoid multiple freeze-thaw cycles.
---------	--

Concentration	0.2 mg/ml (Please refer to the vial label for the specific concentration.)
---------------	--

Immunogen	Recombinant fragment of human Inhibin alpha protein (around aa 233-362)
-----------	---

Purification	Protein A/G purified
--------------	----------------------



For full product information, images and publications, please visit our [website](#).

Conjugation

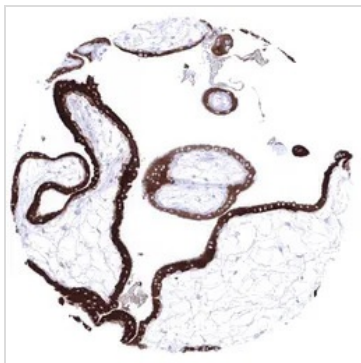
Unconjugated

Note

For laboratory research use only. Not for any clinical, therapeutic, or diagnostic use in humans or animals. Not for animal or human consumption.

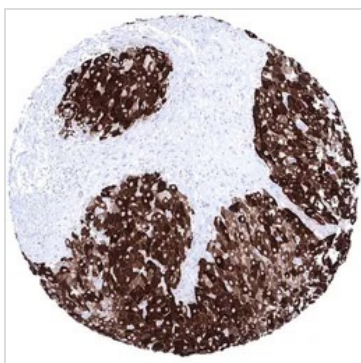
Purchasers shall not, and agree not to enable third parties to, analyze, copy, reverse engineer or otherwise attempt to determine the structure or sequence of the product.

DATA IMAGES

**GTX04415 IHC-P Image**

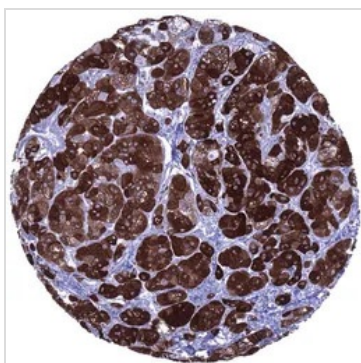
IHC-P analysis of human placenta tissue section using GTX04415 Inhibin alpha antibody [MSVA-561R] HistoMAX™.

A strong inhibin alpha immunostaining is seen in the cyto and syncytiotrophoblast of the placenta of the first trimester.

**GTX04415 IHC-P Image**

IHC-P analysis of human ovary tissue section using GTX04415 Inhibin alpha antibody [MSVA-561R] HistoMAX™.

The strongest inhibin alpha immunostaining among normal tissues is seen in the corpus luteum of the ovary.

**GTX04415 IHC-P Image**

IHC-P analysis of human adrenocortical adenoma tissue section using GTX04415 Inhibin alpha antibody [MSVA-561R] HistoMAX™.

Strong inhibin alpha immunostaining in all cells of an adrenocortical adenoma.



For full product information, images and publications, please visit our [website](#).