



# SZABO SCANDIC

Part of Europa Biosite

## Produktinformation



Forschungsprodukte & Biochemikalien



Zellkultur & Verbrauchsmaterial



Diagnostik & molekulare Diagnostik



Laborgeräte & Service

Weitere Information auf den folgenden Seiten!  
See the following pages for more information!



### Lieferung & Zahlungsart

siehe unsere [Liefer- und Versandbedingungen](#)

### Zuschläge

- Mindermengenzuschlag
- Trockeneiszuschlag
- Gefahrgutzuschlag
- Expressversand

### SZABO-SCANDIC HandelsgmbH

Quellenstraße 110, A-1100 Wien

T. +43(0)1 489 3961-0

F. +43(0)1 489 3961-7

[mail@szabo-scandic.com](mailto:mail@szabo-scandic.com)

[www.szabo-scandic.com](http://www.szabo-scandic.com)

[linkedin.com/company/szaboscandic](https://www.linkedin.com/company/szaboscandic) 

## Calbindin antibody [MSVA-471M] HistoMAX™

Cat. No. GTX04454

|             |            |
|-------------|------------|
| Host        | Mouse      |
| Clonality   | Monoclonal |
| Isotype     | IgG2c      |
| Application | IHC-P      |
| Reactivity  | Human      |

Package  
500 µl, 100 µl

## PRODUCT

This antibody was validated on 76 different Normal Tissues by IHC-P.

## Summary

[Go to Normal Tissue Gallery](#)[Go to Cancer Tissue Gallery](#)

## APPLICATION

## Application Note

\*Optimal dilutions/concentrations should be determined by the researcher.

| Suggested dilution | Recommended dilution |
|--------------------|----------------------|
| IHC-P              | 1:50-1:100           |

**Note : Manual staining : Heat-induced antigen retrieval for 5 minutes in an autoclave at 121°C in pH 7.8 Tris-EDTA-based Target Retrieval Solution buffer.**

Not tested in other applications.

Calculated MW 30 kDa. ([Note](#))

## PROPERTIES

|               |  |
|---------------|--|
| Form          | Liquid   |
| Buffer        | PBS, 0.05% BSA (Please contact us for PBS only format)   |
| Preservative  | 0.05% sodium azide   |
| Storage       | Store as concentrated solution. Centrifuge briefly prior to opening vial. For short-term storage (1-2 weeks), store at 4°C. For long-term storage, aliquot and store at -20°C or below. Avoid multiple freeze-thaw cycles. |
| Concentration | 0.2 mg/ml (Please refer to the vial label for the specific concentration.)   |
| Immunogen     | Recombinant fragment (around aa 7-96) of human CALB1 protein   |
| Purification  | Protein A/G purified   |
| Conjugation   | Unconjugated   |

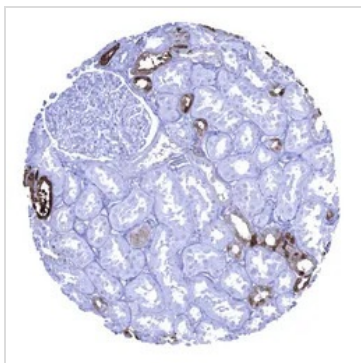
For full product information, images and publications, please visit our [website](#).

For laboratory research use only. Not for any clinical, therapeutic, or diagnostic use in humans or animals. Not for animal or human consumption.

**Note**

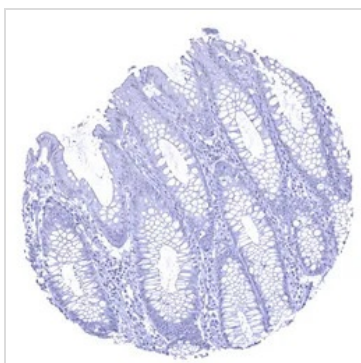
Purchasers shall not, and agree not to enable third parties to, analyze, copy, reverse engineer or otherwise attempt to determine the structure or sequence of the product.

## DATA IMAGES

**GTX04454 IHC-P Image**

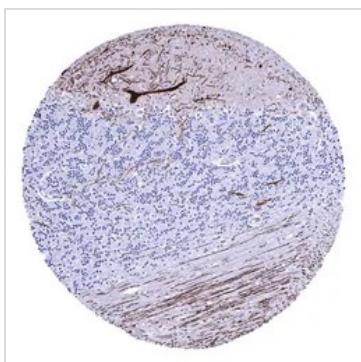
IHC-P analysis of human kidney cortex tissue section using GTX04454 Calbindin antibody [MSVA-471M] HistoMAX™.

A strong cytoplasmic Calbindin immunostaining occurs in a fraction of distal tubuli of the kidney.

**GTX04454 IHC-P Image**

IHC-P analysis of human colon mucosa tissue section using GTX04454 Calbindin antibody [MSVA-471M] HistoMAX™.

Calbindin immunostaining is absent in all cells of the colon mucosa.

**GTX04454 IHC-P Image**

IHC-P analysis of human cerebellum tissue section using GTX04454 Calbindin antibody [MSVA-471M] HistoMAX™.

Cerebellum molecular layer Purkinje cell layer granule cell layer white matter. A strong Calbindin staining of Purkinje cells and of associated axonal fibres is seen in the cerebrum.



For full product information, images and publications, please visit our [website](#).