



SZABO SCANDIC

Part of Europa Biosite

Produktinformation



Forschungsprodukte & Biochemikalien



Zellkultur & Verbrauchsmaterial



Diagnostik & molekulare Diagnostik



Laborgeräte & Service

Weitere Information auf den folgenden Seiten!
See the following pages for more information!



Lieferung & Zahlungsart

siehe unsere [Liefer- und Versandbedingungen](#)

Zuschläge

- Mindermengenzuschlag
- Trockeneiszuschlag
- Gefahrgutzuschlag
- Expressversand

SZABO-SCANDIC HandelsgmbH

Quellenstraße 110, A-1100 Wien

T. +43(0)1 489 3961-0

F. +43(0)1 489 3961-7

mail@szabo-scandic.com

www.szabo-scandic.com

[linkedin.com/company/szaboscandic](https://www.linkedin.com/company/szaboscandic) 

Glutamine synthetase antibody [MSVA-750M] HistoMAX™

Cat. No. GTX04471

| | |
|-------------|------------|
| Host | Mouse |
| Clonality | Monoclonal |
| Isotype | IgG2c |
| Application | IHC-P |
| Reactivity | Human |

Package
500 µl, 100 µl

PRODUCT

This antibody was validated on 76 different Normal Tissues by IHC-P.

Summary

[Go to Normal Tissue Gallery](#)[Go to Cancer Tissue Gallery](#)

APPLICATION

Application Note

*Optimal dilutions/concentrations should be determined by the researcher.

| Suggested dilution | Recommended dilution |
|--------------------|----------------------|
| IHC-P | 1:100-1:200 |

Note : Manual staining : Heat-induced antigen retrieval for 5 minutes in an autoclave at 121°C in pH 7.8 Tris-EDTA-based Target Retrieval Solution buffer.**This antibody has been validated by Autostainer including Agilent/Dako - Autostainer Link 48, Bond RX-Lecia, and Roche-Ventana Discovery ULTRA. The detailed steps by Autostainer please refer to the protocol.**

Not tested in other applications.

Calculated MW 42 kDa. ([Note](#))

PROPERTIES

| | |
|---------------|--|
| Form | Liquid |
| Buffer | PBS, 0.05% BSA (Please contact us for PBS only format) |
| Preservative | 0.05% sodium azide |
| Storage | Store as concentrated solution. Centrifuge briefly prior to opening vial. For short-term storage (1-2 weeks), store at 4°C. For long-term storage, aliquot and store at -20°C or below. Avoid multiple freeze-thaw cycles. |
| Concentration | 0.2 mg/ml (Please refer to the vial label for the specific concentration.) |
| Immunogen | Recombinant fragment (around aa 50-250) of human GLUL protein |
| Purification | Protein A/G purified |

For full product information, images and publications, please visit our [website](#).

Date 2024 / 06 / 27 Page 1 of 2

Conjugation

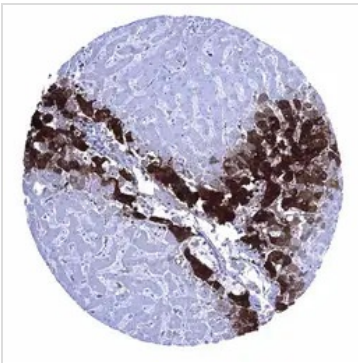
Unconjugated

Note

For laboratory research use only. Not for any clinical, therapeutic, or diagnostic use in humans or animals. Not for animal or human consumption.

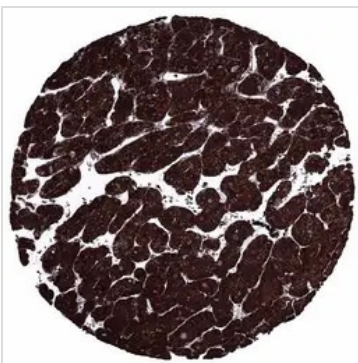
Purchasers shall not, and agree not to enable third parties to, analyze, copy, reverse engineer or otherwise attempt to determine the structure or sequence of the product.

DATA IMAGES

**GTX04471 IHC-P Image**

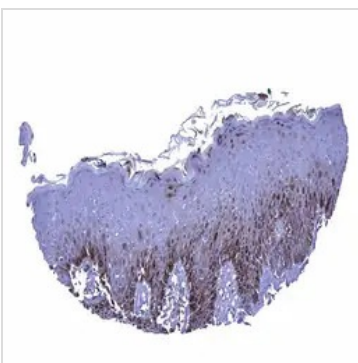
IHC-P analysis of human liver tissue section using GTX04471 Glutamine synthetase antibody [MSVA-750M] HistoMAX™.

Glutamine Synthetase staining is strong in centrilobular hepatocytes weak to moderate in Kupffer cells but absent in periportal hepatocytes.

**GTX04471 IHC-P Image**

IHC-P analysis of human hepatocellular carcinoma tissue section using GTX04471 Glutamine synthetase antibody [MSVA-750M] HistoMAX™.

Hepatocellular carcinoma with excessive Glutamine Synthetase positivity of all tumor cells.

**GTX04471 IHC-P Image**

IHC-P analysis of human skin squamous epithelium tissue section using GTX04471 Glutamine synthetase antibody [MSVA-750M] HistoMAX™.

In the skin, a nuclear and cytoplasmic Glutamine Synthetase staining can be seen in the lower third and in the top layers of the squamous epithelium.



For full product information, images and publications, please visit our [website](#).