



SZABO SCANDIC

Part of Europa Biosite

Produktinformation



Forschungsprodukte & Biochemikalien



Zellkultur & Verbrauchsmaterial



Diagnostik & molekulare Diagnostik



Laborgeräte & Service

Weitere Information auf den folgenden Seiten!
See the following pages for more information!



Lieferung & Zahlungsart

siehe unsere [Liefer- und Versandbedingungen](#)

Zuschläge

- Mindermengenzuschlag
- Trockeneiszuschlag
- Gefahrgutzuschlag
- Expressversand

SZABO-SCANDIC HandelsgmbH

Quellenstraße 110, A-1100 Wien

T. +43(0)1 489 3961-0

F. +43(0)1 489 3961-7

mail@szabo-scandic.com

www.szabo-scandic.com

[linkedin.com/company/szaboscandic](https://www.linkedin.com/company/szaboscandic) 

CYP2E1 antibody

Cat. No. GTX04494

Host	Rabbit
Clonality	Polyclonal
Isotype	IgG
Application	WB, IHC-P, FACS, ELISA
Reactivity	Human, Mouse, Rat

Package
100 µg

APPLICATION

Application Note

*Optimal dilutions/concentrations should be determined by the researcher.

Suggested dilution	Recommended dilution
WB	0.25-0.5µg/ml
IHC-P	0.5-1µg/ml
FACS	1-3µg/1x10 ⁶ cells
ELISA	0.1-0.5µg/ml

Not tested in other applications.

Calculated MW 57 kDa. ([Note](#))

PROPERTIES

Form	Liquid
Buffer	4mg Trehalose, 0.9mg NaCl, 0.2mg Na ₂ HPO ₄
Preservative	0.05mg Sodium azide
Storage	Store as concentrated solution. Centrifuge briefly prior to opening vial. For short-term storage (1-2 weeks), store at 4°C. For long-term storage, aliquot and store at -20°C or below. Avoid multiple freeze-thaw cycles.
Concentration	0.5 mg/ml (Please refer to the vial label for the specific concentration.)
Immunogen	E.coli-derived human Cytochrome P450 2E1/CYP2E1 recombinant protein (Position: H355-S493).
Purification	Purified by antigen-affinity chromatography
Conjugation	Unconjugated

Note

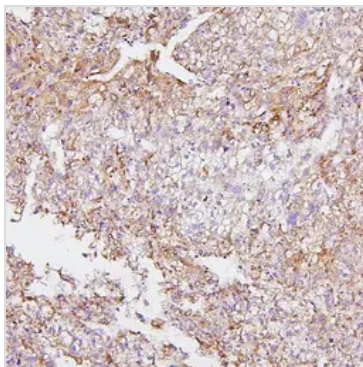
For laboratory research use only. Not for any clinical, therapeutic, or diagnostic use in humans or animals. Not for animal or human consumption.

Purchasers shall not, and agree not to enable third parties to, analyze, copy, reverse engineer or otherwise attempt to determine the structure or sequence of the product.



For full product information, images and publications, please visit our [website](#).

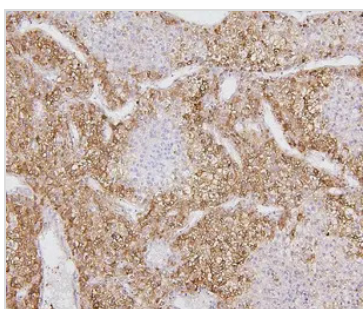
DATA IMAGES

**GTX04494 IHC-P Image**

IHC-P analysis of human liver cancer tissue using GTX04494 CYP2E1 antibody.

Antigen retrieval : Heat mediated citrate buffer (pH6.0)

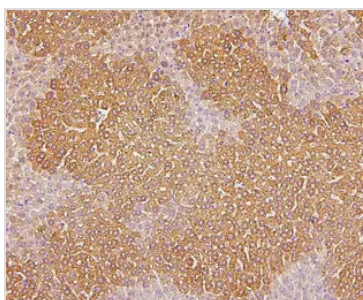
Dilution : 1µg/ml

**GTX04494 IHC-P Image**

IHC-P analysis of human liver cancer tissue using GTX04494 CYP2E1 antibody.

Antigen retrieval : Heat mediated citrate buffer (pH6.0)

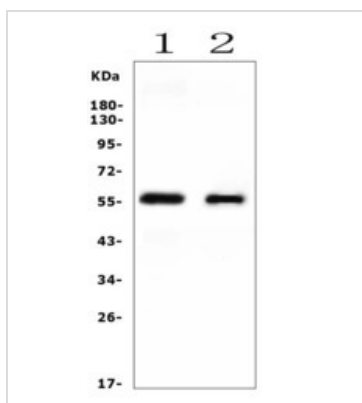
Dilution : 1µg/ml

**GTX04494 IHC-P Image**

IHC-P analysis of mouse liver tissue using GTX04494 CYP2E1 antibody.

Antigen retrieval : Heat mediated citrate buffer (pH6.0)

Dilution : 1µg/ml

**GTX04494 WB Image**

WB analysis of various sample lysates using GTX04494 CYP2E1 antibody.

Lane 1: Rat liver tissue lysates

Lane 2 : Mouse liver tissue lysates

Dilution : 0.5 µg/mL

Loading : 50 µg



For full product information, images and publications, please visit our [website](#).