



SZABO SCANDIC

Part of Europa Biosite

Produktinformation



Forschungsprodukte & Biochemikalien



Zellkultur & Verbrauchsmaterial



Diagnostik & molekulare Diagnostik



Laborgeräte & Service

Weitere Information auf den folgenden Seiten!
See the following pages for more information!



Lieferung & Zahlungsart

siehe unsere [Liefer- und Versandbedingungen](#)

Zuschläge

- Mindermengenzuschlag
- Trockeneiszuschlag
- Gefahrgutzuschlag
- Expressversand

SZABO-SCANDIC HandelsgmbH

Quellenstraße 110, A-1100 Wien

T. +43(0)1 489 3961-0

F. +43(0)1 489 3961-7

mail@szabo-scandic.com

www.szabo-scandic.com

[linkedin.com/company/szaboscandic](https://www.linkedin.com/company/szaboscandic) 

GST tag antibody (AP)

Cat. No. GTX04517

Host	Rabbit
Clonality	Polyclonal
Isotype	IgG
Application	WB, IHC-P, ELISA

Package
100 µg

APPLICATION

Application Note

*Optimal dilutions/concentrations should be determined by the researcher.

Suggested dilution	Recommended dilution
WB	1:500-1:2500
IHC-P	1:200-1:1000
ELISA	1:2000-1:10000

Not tested in other applications.

Product Note

Assay by immunoelectrophoresis resulted in a single precipitin arc against anti-Rabbit Serum, anti-Alkaline Phosphatase, as well as purified and partially purified Glutathione-S-Transferase [*Schistosoma japonicum*]. Cross reactivity against Glutathione-S-Transferase from other sources may occur but has not been specifically determined.

PROPERTIES

Form	Liquid
Buffer	0.05 M Tris Chloride pH 8.0, 0.15M NaCl, 0.001M M MgCl ₂ , 0.0001M ZnCl ₂ , 50% (v/v) Glycerol, 10 mg/mL BSA
Preservative	0.01% (w/v) Sodium azide
Storage	Store as concentrated solution. Centrifuge briefly prior to opening vial. Store at 4°C. DO NOT FREEZE.
Concentration	0.5 mg/ml (Please refer to the vial label for the specific concentration.)
Immunogen	Full length GST isolated from <i>Schistosoma japonicum</i> .
Purification	Purified by antigen-affinity chromatography From serum
Conjugation	Alkaline Phosphatase (AP)

Note

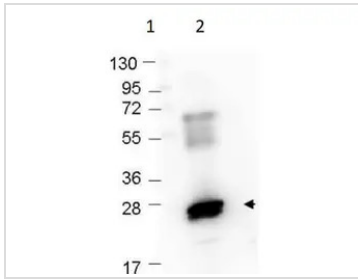
For laboratory research use only. Not for any clinical, therapeutic, or diagnostic use in humans or animals. Not for animal or human consumption.

Purchasers shall not, and agree not to enable third parties to, analyze, copy, reverse engineer or otherwise attempt to determine the structure or sequence of the product.



For full product information, images and publications, please visit our [website](#).

DATA IMAGES

**GTX04517 WB Image**

WB analysis of recombinant GST protein using GTX04517 GST tag antibody (AP).

Lane 1 : protein marker

Lane 2 : Primary antibody

Dilution :1:1000

Loading : 0.25 μ g



For full product information, images and publications, please visit our [website](#).