



SZABO SCANDIC

Part of Europa Biosite

Produktinformation



Forschungsprodukte & Biochemikalien



Zellkultur & Verbrauchsmaterial



Diagnostik & molekulare Diagnostik



Laborgeräte & Service

Weitere Information auf den folgenden Seiten!
See the following pages for more information!



Lieferung & Zahlungsart

siehe unsere [Liefer- und Versandbedingungen](#)

Zuschläge

- Mindermengenzuschlag
- Trockeneiszuschlag
- Gefahrgutzuschlag
- Expressversand

SZABO-SCANDIC HandelsgmbH

Quellenstraße 110, A-1100 Wien

T. +43(0)1 489 3961-0

F. +43(0)1 489 3961-7

mail@szabo-scandic.com

www.szabo-scandic.com

[linkedin.com/company/szaboscandic](https://www.linkedin.com/company/szaboscandic) 

ALOX15 antibody [OTI3G8]

Cat. No. GTX04520

Host	Mouse
Clonality	Monoclonal
Isotype	IgG2b
Application	WB, ICC/IF, IHC-P
Reactivity	Human, Rat, Dog, Monkey

Package
100 µl

APPLICATION

Application Note

*Optimal dilutions/concentrations should be determined by the researcher.

Suggested dilution	Recommended dilution
WB	1:500-1:2000
ICC/IF	1:100
IHC-P	1:150

Not tested in other applications.

Calculated MW 75 kDa. ([Note](#))

PROPERTIES

Form	Liquid
Buffer	PBS pH 7.3, 1% BSA, 50% glycerol
Preservative	0.02% sodium azide
Storage	Store as concentrated solution. Centrifuge briefly prior to opening vial. For short-term storage (1-2 weeks), store at 4°C. For long-term storage, aliquot and store at -20°C or below. Avoid multiple freeze-thaw cycles.
Concentration	1 mg/ml (Please refer to the vial label for the specific concentration.)
Immunogen	Full length human recombinant protein of human ALOX15(NP_001131) produced in HEK293T cell.
Purification	Protein A/G purified
Conjugation	Unconjugated

Note

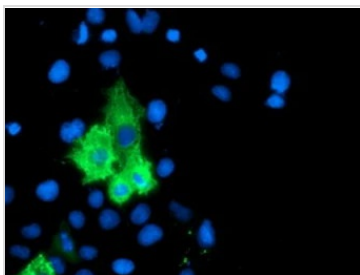
For laboratory research use only. Not for any clinical, therapeutic, or diagnostic use in humans or animals. Not for animal or human consumption.

Purchasers shall not, and agree not to enable third parties to, analyze, copy, reverse engineer or otherwise attempt to determine the structure or sequence of the product.

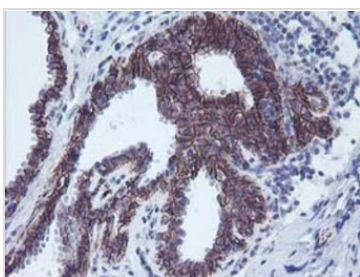


For full product information, images and publications, please visit our [website](#).

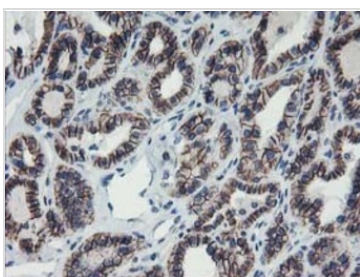
DATA IMAGES

**GTX04520 ICC/IF Image**

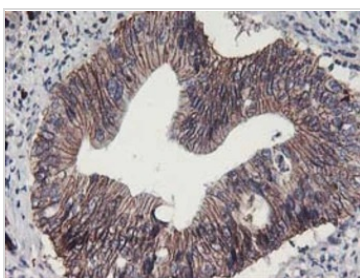
ICC/IF analysis of COS7 cells with human ALOX15 transfection using GTX04520 ALOX15 antibody [OTI3G8].

**GTX04520 IHC-P Image**

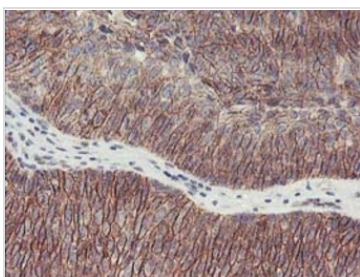
IHC-P analysis of human breast tissue using GTX04520 ALOX15 antibody [OTI3G8].
Antigen retrieval : 10mM citric buffer (pH 6.0) at 100°C for 10min

**GTX04520 IHC-P Image**

IHC-P analysis of human thyroid carcinoma tissue using GTX04520 ALOX15 antibody [OTI3G8].
Antigen retrieval : 10mM citric buffer (pH 6.0) at 100°C for 10min

**GTX04520 IHC-P Image**

IHC-P analysis of human pancreas carcinoma tissue using GTX04520 ALOX15 antibody [OTI3G8].
Antigen retrieval : 10mM citric buffer (pH 6.0) at 100°C for 10min

**GTX04520 IHC-P Image**

IHC-P analysis of human bladder carcinoma tissue using GTX04520 ALOX15 antibody [OTI3G8].
Antigen retrieval : 10mM citric buffer (pH 6.0) at 100°C for 10min



For full product information, images and publications, please visit our [website](#).