



SZABO SCANDIC

Part of Europa Biosite

Produktinformation



Forschungsprodukte & Biochemikalien



Zellkultur & Verbrauchsmaterial



Diagnostik & molekulare Diagnostik



Laborgeräte & Service

Weitere Information auf den folgenden Seiten!
See the following pages for more information!



Lieferung & Zahlungsart

siehe unsere [Liefer- und Versandbedingungen](#)

Zuschläge

- Mindermengenzuschlag
- Trockeneiszuschlag
- Gefahrgutzuschlag
- Expressversand

SZABO-SCANDIC HandelsgmbH

Quellenstraße 110, A-1100 Wien

T. +43(0)1 489 3961-0

F. +43(0)1 489 3961-7

mail@szabo-scandic.com

www.szabo-scandic.com

[linkedin.com/company/szaboscandic](https://www.linkedin.com/company/szaboscandic) 

Human Lipocalin-2 protein, His tag

Cat. No. GTX04522-pro

Species	Human
---------	-------

Package	50 µg
---------	-------

APPLICATION

Calculated MW	24.4 kDa. (Note)
---------------	------------------------------------

Observed MW	24 kDa.
-------------	---------

PROPERTIES

Form	Lyophilized powder
------	--------------------

Buffer	Reconstitute in 10mM PBS pH7.4 to a concentration of 0.1-1.0 mg/mL. Do not vortex. Lyophilized from PBS pH7.4, 0.01% SKL, 5% Trehalose.
--------	---

Preservative	No preservatives
--------------	------------------

Storage	Store at -20°C or below. After reconstitution, keep as concentrated solution. For short-term storage (1-2 weeks), store at 4°C. For long-term storage, aliquot and store at -20°C or below. Avoid multiple freeze-thaw cycles.
---------	--

Concentration	Batch dependent (Please refer to the vial label for the specific concentration.)
---------------	--

Region/Sequence	N-terminal His tagged full length human Lipocalin-2 protein (Gln21~Gly198: a signal peptide removed), Uniprot #P80188-1).
-----------------	---

Expression System	E. coli
-------------------	---------

Purity	>95% by SDS-PAGE
--------	------------------

Endotoxin	<1.0 EU/1µg
-----------	-------------

Conjugation	Unconjugated
-------------	--------------

Note

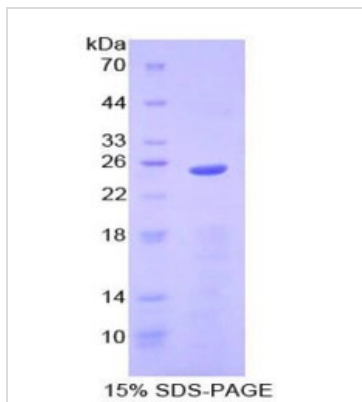
For laboratory research use only. Not for any clinical, therapeutic, or diagnostic use in humans or animals. Not for animal or human consumption.

Purchasers shall not, and agree not to enable third parties to, analyze, copy, reverse engineer or otherwise attempt to determine the structure or sequence of the product.



For full product information, images and publications, please visit our [website](#).

DATA IMAGES

**GTX04522-pro Image**

SDS-PAGE analysis of GTX04522-pro Human Lipocalin-2 protein, His tag.



For full product information, images and publications, please visit our [website](#).