



SZABO SCANDIC

Part of Europa Biosite

Produktinformation



Forschungsprodukte & Biochemikalien



Zellkultur & Verbrauchsmaterial



Diagnostik & molekulare Diagnostik



Laborgeräte & Service

Weitere Information auf den folgenden Seiten!
See the following pages for more information!



Lieferung & Zahlungsart

siehe unsere [Liefer- und Versandbedingungen](#)

Zuschläge

- Mindermengenzuschlag
- Trockeneiszuschlag
- Gefahrgutzuschlag
- Expressversand

SZABO-SCANDIC HandelsgmbH

Quellenstraße 110, A-1100 Wien

T. +43(0)1 489 3961-0

F. +43(0)1 489 3961-7

mail@szabo-scandic.com

www.szabo-scandic.com

[linkedin.com/company/szaboscandic](https://www.linkedin.com/company/szaboscandic) 

Dopamine Transporter antibody

Cat. No. GTX04526

Host	Rabbit
Clonality	Polyclonal
Isotype	IgG
Application	WB, ICC/IF, IHC-P, IHC-Fr, FACS
Reactivity	Mouse, Rat, Mink

Package
100 µl

APPLICATION

Application Note

*Optimal dilutions/concentrations should be determined by the researcher.

Suggested dilution	Recommended dilution
WB	1:300-1:5000
ICC/IF	1:50-1:200
IHC-P	1:200-1:400
IHC-Fr	1:100-1:500
FACS	1:20-1:100

Not tested in other applications.

Calculated MW 68 kDa. ([Note](#))

PROPERTIES

Form	Liquid
Buffer	0.01M TBS pH 7.4, 1% BSA, 50% Glycerol
Preservative	0.03% Proclin300
Storage	Store as concentrated solution. Centrifuge briefly prior to opening vial. For short-term storage (1-2 weeks), store at 4°C. For long-term storage, aliquot and store at -20°C or below. Avoid multiple freeze-thaw cycles.
Concentration	1 mg/ml (Please refer to the vial label for the specific concentration.)
Immunogen	KLH conjugated synthetic peptide derived from human DAT1 (aa 579-620)
Purification	Protein A purified
Conjugation	Unconjugated

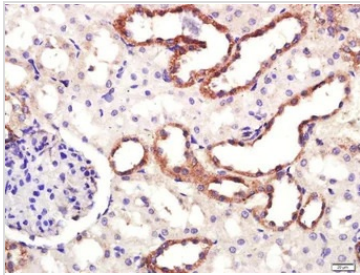


For full product information, images and publications, please visit our [website](#).

For laboratory research use only. Not for any clinical, therapeutic, or diagnostic use in humans or animals. Not for animal or human consumption.

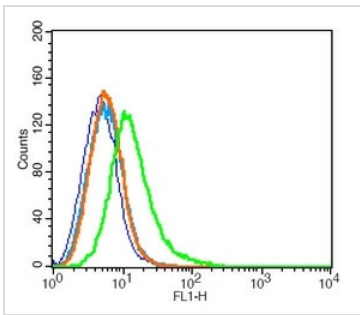
Note
 Purchasers shall not, and agree not to enable third parties to, analyze, copy, reverse engineer or otherwise attempt to determine the structure or sequence of the product.

DATA IMAGES



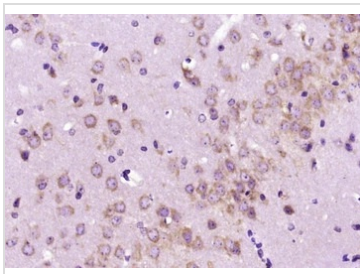
GTX04526 IHC-P Image

IHC-P analysis rat kidney tissue using GTX04526 Dopamine transporter antibody.
 Antigen retrieval : Heat mediated sodium citrate buffer (pH 6.0) for 15min
 Dilution : 1:400



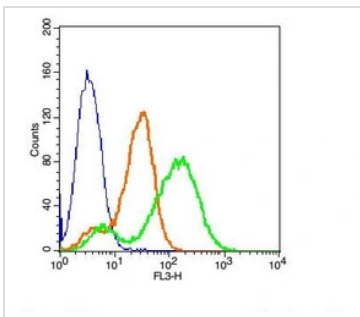
GTX04526 FACS Image

FACS analysis of RSC96 cells using GTX04526 Dopamine transporter antibody.
 Green : Primary antibody
 Blue : Control cells
 Light blue : Secondary antibody only
 Orange : Isotype control
 Dilution : 6 µg



GTX04526 IHC-P Image

IHC-P analysis of mouse brain tissue using GTX04526 Dopamine transporter antibody.
 Antigen retrieval : Heat mediated sodium citrate buffer (pH 6.0) for 15min
 Dilution : 1:400



GTX04526 FACS Image

FACS analysis of RSC96 cells using GTX04526 Dopamine transporter antibody.
 Green : Primary antibody
 Orange : Isotype control
 Blue : Non-stained cells
 Dilution : 1:33



For full product information, images and publications, please visit our [website](#).